



**One smart printer to  
print it all**

**BMP71 Label Printer**

# About BRADY



Once you have worked with BRADY, our name will stick with you, (just like our labels) because BRADY is one of the world's leading labelling and identification specialists.

## Innovative

At BRADY we continue to improve. We have many customers from all industries, and we strive to be ahead of their needs by continuing to invest in research for even more performant solutions. By developing more user-friendly and efficient concepts, we give our thousands of customers the best in the market.

## Strength

At BRADY, we believe our biggest strength is the wide range of identification and safety solutions we can offer our customers, whether it's labelling the smallest component or complete signage for an entire warehouse. We're also proud to offer many products and services - from printers, scanners and software to service contracts and on-site training - that compliment any identification job. And don't forget, our wide network of expert distributors can always offer you a tailor-made solution to meet your specific requirements.

## Trust

For over a hundred years, BRADY has been connected with quality, trust and stability. We demand the best for your products and services, because we know, better than anyone, the importance of good and reliable identification. Identification looks like a small detail, but every professional knows that this kind of detail is crucial to any business.

## Inform

We also have specialised dealers in your region, who can answer all your identification and labelling questions, specific to your activity. They will be happy to provide you with all kinds of options and solutions with no obligation.

Microsoft is a trademark of Microsoft Corporation, Bluetooth is a trademark of Bluetooth Sig, Inc., Android is a trademark of Google Inc.



Brady products are sold on the condition that the purchaser will test them in actual use and determine for himself/herself their suitability to his/her intended purpose. Brady warrants to the purchaser that Brady products are free from defects in material and workmanship but limits its obligation under this warranty to the replacement of the product which has been shown to Brady's satisfaction to have been defective at the time of its purchase.

The warranty does not extend to any persons who have acquired the product from the purchaser. It is in lieu of any other warranty, including every warranty of sale-ability, marketability or suitability for the intended purpose, and is also in lieu of any other obligation or liability on the part of Brady.

Under no circumstances will Brady be liable for losses, damage, costs or subsequent damage of whatever nature which may arise in connection with the use of, or inability to use, Brady's products.

# BMP71 Label Printer

## The Brady Advantage

When it comes to identification, safety and compliance, there's a clear advantage to working with Brady. We put our customers first in everything we do.

Our goal is to give you an unrivalled customer experience. We are relentlessly committed to performance and excellence - in our products, services and people.

Our products and solutions perform in ways that others simply can't match. Our people perform in ways that regularly exceed your expectations. And our focus and discipline work toward solid, long-term performance for our customers.

In short, Brady is the company you trust when performance matters most.

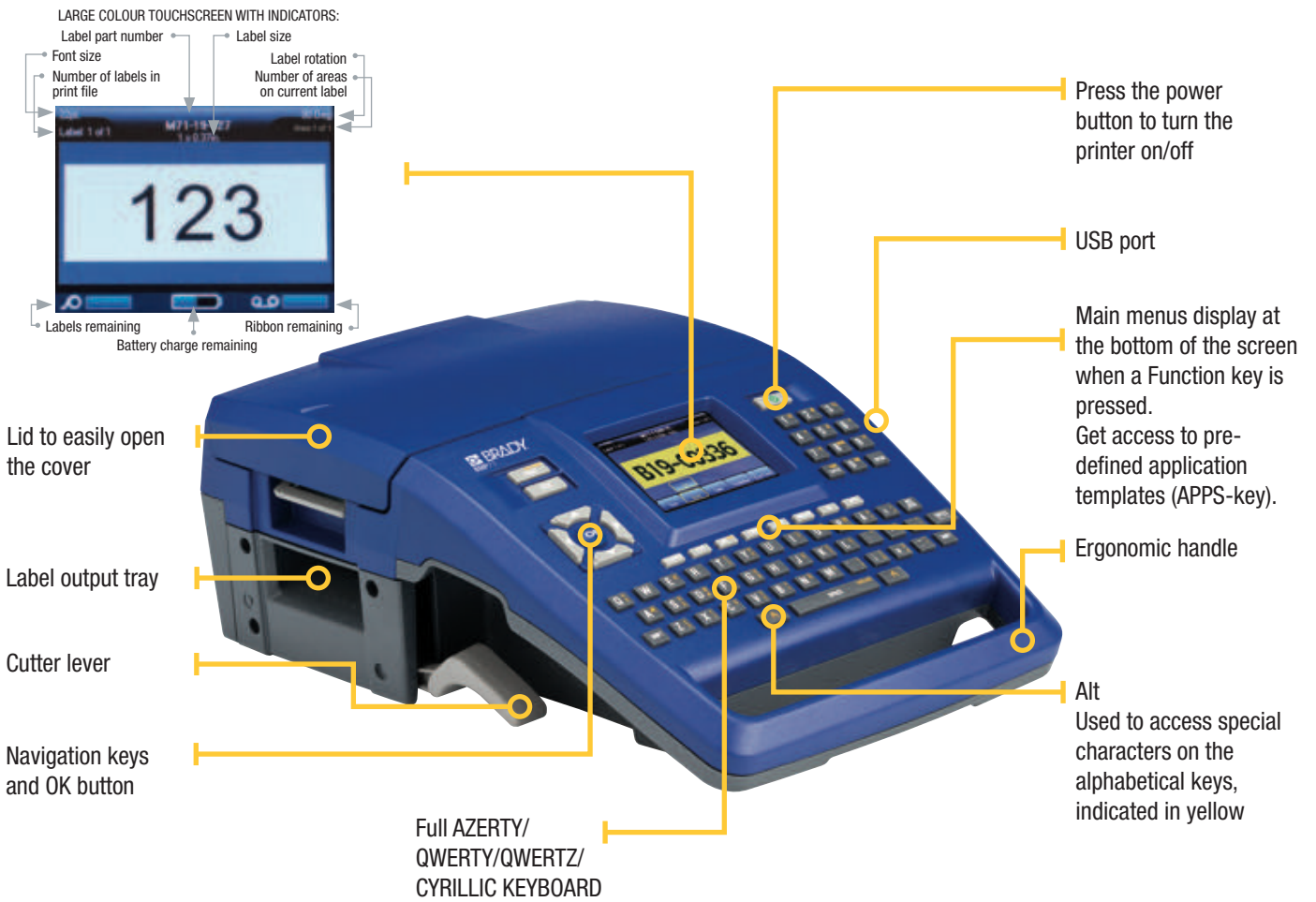
**Learn more about the Brady Advantage at:**  
[www.bradyeurope.com](http://www.bradyeurope.com)

## Contents

- 4 BMP71 at a glance
- 5 One smart printer to print it all
- 6 Font sizes & symbol library
- 7 Applications
- 10 Advantages of labelling
- 11 What is a professional label?
- 12 BMP71 media offering
- 13 Ribbons
- 14 Electrical, voice/datacom identification
- 29 General & industrial identification
- 33 Safety & facility identification
- 38 Electronics identification
- 40 Laboratory identification
- 49 Master material index
- 52 Brady Workstation software suites
- 53 Printer specifications
- 54 BMP71 Printer, kits and accessories
- 55 Brady Technical Service



# BMP71 at a glance



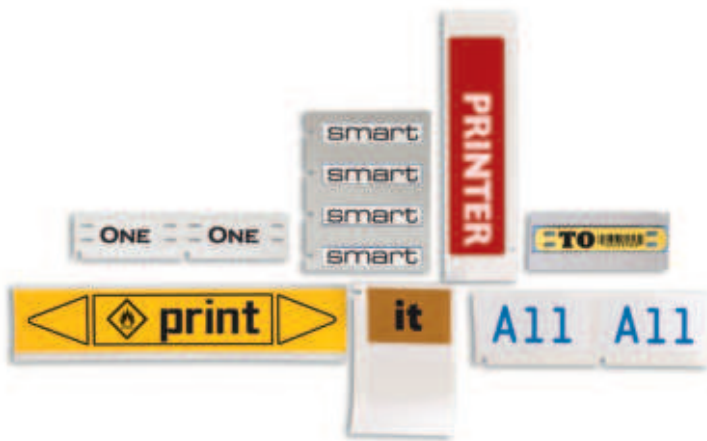
Watch the how to videos on our Brady YouTube channel.

**2 YEAR WARRANTY**





# One smart printer to print it all



## BMP71 LABEL PRINTER

The BMP71 Label Printer is the premium mobile printer. Able to print the widest range of materials, including custom labels, BMP71 features a large and sharp screen, is easily portable and has a built-in keyboard, available in various configurations. Whether you need heat-shrink sleeves, die-cut labels or indoor/outdoor vinyl, you can be confident that the BMP71 printer has the right label material for your application.

### Helps you deal with every situation

- Over 500 built-in symbols
- Over 400 parts + customs
- Over 30 different types of label material
- Label width up to 50 mm

### Keeps you going on and on

- AA batteries or rechargeable NiMH battery
- Ideal for 1000 continuous or die-cut labels a day
- 2 year warranty

### Shows the whole label at once

- Enlarged full colour screen

### Speeds up your labelling

- Swift typing with both hands
- Full Qwerty/Azerty/Qwertz/Cyrillic keyboards
- Fast printing : 38 mm/sec

**The BMP71 is your essential tool that handles all your label printing needs.**



# Font sizes & symbol library

## Variable font sizes

Font sizes range from 4 to 170 point.

The maximum font size available depends on factors such as label size, number of characters, number of lines, as well as font sizes in other lines.



Also available: full height, auto and custom font sizes.

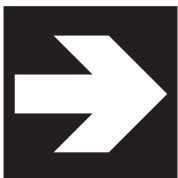
## Barcode types



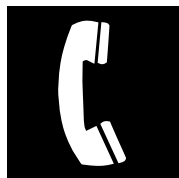
- Code 39 and Code 128
- Other barcodes supported

## Symbol library

- Standard electrical and datacom symbols
- Over 500 built-in graphics
- Built-in time/date stamp
- Signs can easily be imported



Arrows



Datacom



Electrical



Exit



Fire



First aid



GHS



International



Mandatory



Misc.



Packaging



PPE



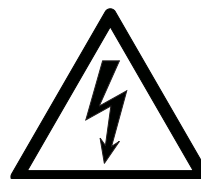
Prohibition



Public info



Safety



Warning



WHMIS

...and many more

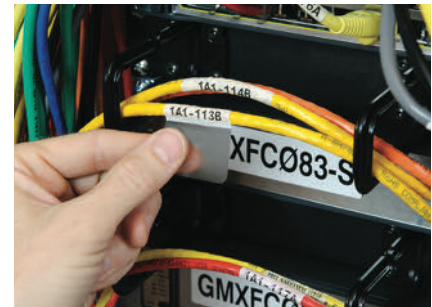
# Applications

## Electrical, voice/datacom identification

**Wire & cable marking** for twisted pair data cables (UTP, FTP...), fibre optic cables, conductors, computer wires, electrical installation wires & cables, power & ground cables, energy cables...



*Sleeves*



*Self-lams*



*Wrap-around labels*



*Flags*

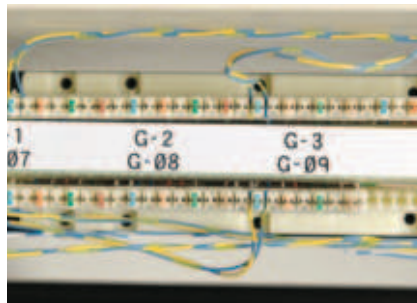


*Tags*

**Component marking** for patch panels, control panels, punch blocks, terminal blocks, breaker boxes, face-plates...



*Raised panels*



*Terminal block labels*



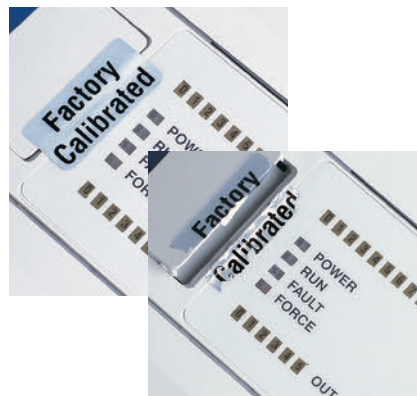
*Punch block & patch panel labels*

## General & industrial identification

**Asset & component marking** to be used on all kind of surfaces (smooth, rough, textured, low energy...).



*Rating & name plate labels*



*Security identification labels*



# Applications

## Safety & facility identification



Pipe & valve marking



Food processing equipment marking



Exit & directional signs



Maintenance labels



Area & pathway marking



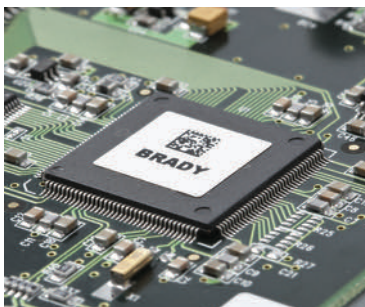
Safety signs and labels



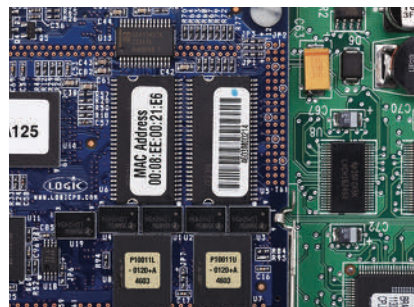
Lean warehouse labels

## Electronics identification

**Circuit Board Marking** for printed circuit board identification (also static dissipative), PCB SMT – Top/Bottom...



Polyester labels



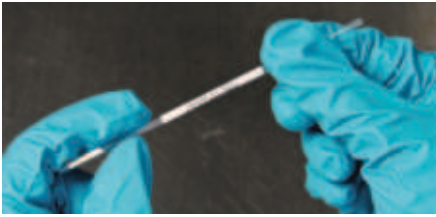
Polyimide labels



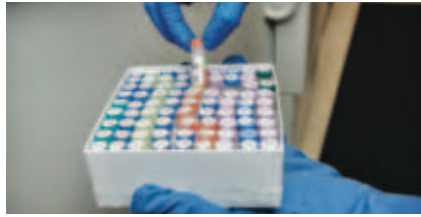
# Applications

## Laboratory identification

**Specimen tracking identification** for sample tracking within histology labs: use barcode technology to prevent misdiagnosis.



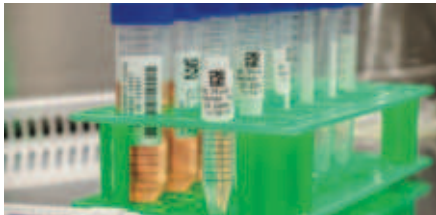
*Straws & rods*



*Vial top labels*



*Vial & tube labels*

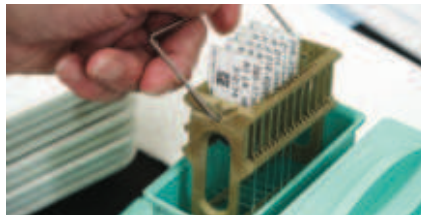


*Conical & large tube labels*

**Specimen process marking** supporting microscopic analysis of cells and tissues within pathology and clinical labs.



*Centrifuge/microcentrifuge labels*



*Slide labels*

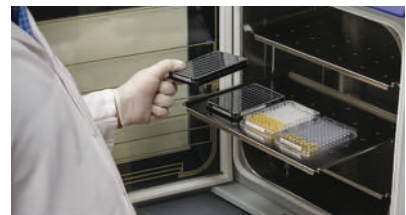
**Specimen storage identification** supporting specimen collection and handling such as blood samples, cryo-samples etc.



*Cryo labels*



*Tissue cassette labels*



*Well plate labels*

**Lean lab identification** for general supplies marking.



*Bottle tamper seals*



*Bottles, flasks & dishes*



*General lab equipment labels*

# Advantages of labelling

## Ever lost time figuring out where each wire goes?

Durable professional labels that remain legible and stay attached in harsh conditions are extremely important to keep power, network, voice and data cables and components organised and running effectively.

## Professional identification on wires, cables and components enables you to:

- immediately recognise what needs checking during troubleshooting
- clearly mark parts for upcoming maintenance upgrades
- trace history, lifespan and supplier
- add safety warnings or precautions

Ask yourself how much time or money you lose while trying to trace an unidentified faulty cable, wire or component.

Ask yourself how fast pressure builds when machinery, production lines, servers and services are impacted.

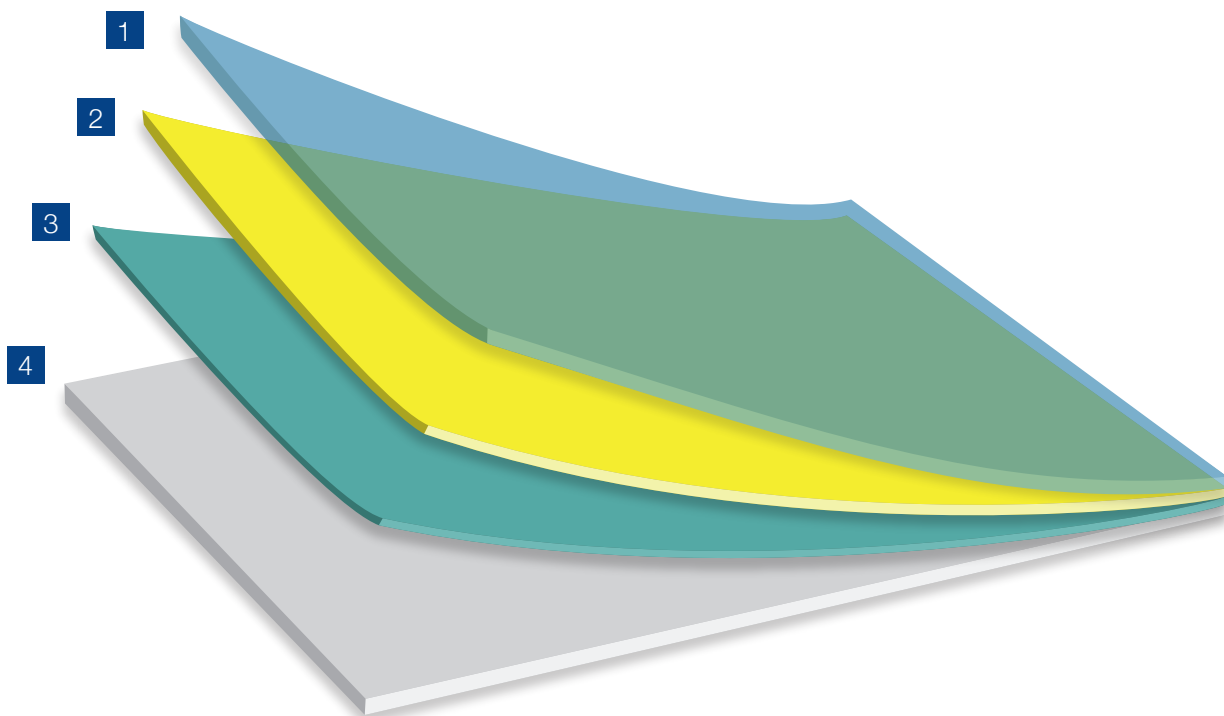
**This is when professional labelling pays off big time.**



# What is a professional label?

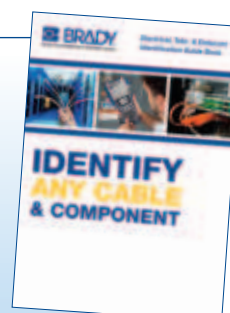
The combination of label liner, adhesive, substrate and topcoat provide a professional label's features, resistances, capabilities and durability.

- 1 The topcoat gives the label its colour and finish, receives the print, and increases resistance against weathering, flames, chemicals or heat.
- 2 The substrate gives the label its form and provides tensile properties such as strength and flexibility and physical properties such as chemical and temperature resistance.
- 3 The adhesive attaches the label to a chosen surface type and ensures resistance against a set of environmental contexts.
- 4 The label liner is a very thin carrier that releases the self-adhesive label.



## Which label suits your needs best?

Request your Electrical, Tele- & Datacom Identification guide book to help you choose the optimal Brady label material for your application at: [www.bradyeurope.com/cableID](http://www.bradyeurope.com/cableID).



# BMP71 media offering

We continuously try to improve & extend our label material offering, therefore make sure to check for firmware upgrades regularly, in order to make sure you always have access to the newest materials.

Material	
B-109	Polyethylene Tag
B-145	Polyethylene Tag
B-342	Heat-shrink Polyolefin Sleeve
B-351	Tamper-resistant Vinyl
B-362	Tamper-resistant Metallised Vinyl
B-403	Paper
B-412	Polypropylene Tag
B-422	Polyester
B-423	Polyester
B-424	Paper
B-425	Polypropylene
B-427	Self-laminating Vinyl
B-428	Metallised Polyester
B-430	Polyester
B-437	Polyvinylfluoride
B-459	Polyester
B-461	Self-laminating Polyester
B-472	Polyimide
B-473	Static Dissipative Polyester
B-481	StainerBondz™ Polyester
B-483	Polyester
B-483/B-634	Polyester with Polyester Overlamine
B-486	Metallised Polyester
B-488	Polyester
B-489	Polyester

Material	
B-490	Freezerbondz™ Polyester
B-492	Freezerbondz™ Polyester
B-498	Vinyl Cloth
B-499	Nylon Cloth
B-529	Polypropylene
B-530	Tamper-resistant Vinyl
B-582	Phosphorescent Polyester
B-584	Reflective Tape
B-595	Vinyl
B-642	Polyvinylfluoride
B-717	Polyimide
B-718	Polyimide
B-719	Polyimide
B-724	Polyimide
B-727	Polyimide
B-7593	Polyethylene Foam Laminate Polyester
B-7598	Polyester Tag
B-7599	Polyethylene Tag
B-7641	Heat-shrink Polyolefin Sleeve
B-7643	Thermoplastic Polyether Polyurethane
B-7696	Vinyl Tag
B-7697	Polyester Tag
B-854	Metal Detectable Polyester
B-855	Polyester

## Backwards compatibility



Prints all TLS 2000 & Handimark label parts including bulk rolls. Users interested in upgrading to a BMP71 Label Printer do not need to invest in a new set of consumables. Most of the BMP61 consumables are also compatible with the BMP71 Label Printer by using the black media guide provided with the BMP61.

## Bulk packaging for high volume printing



Bulk labels are designed as a cost-effective solution for high volume labelling needs. Order references beginning with 'B' indicate bulk rolls. Bulk Label printing requires the media feeder and smart cell spool which are included in the bulk label material packaging.



### Get your custom BMP71 labels according to your specifications!

Frequently used custom labels include:

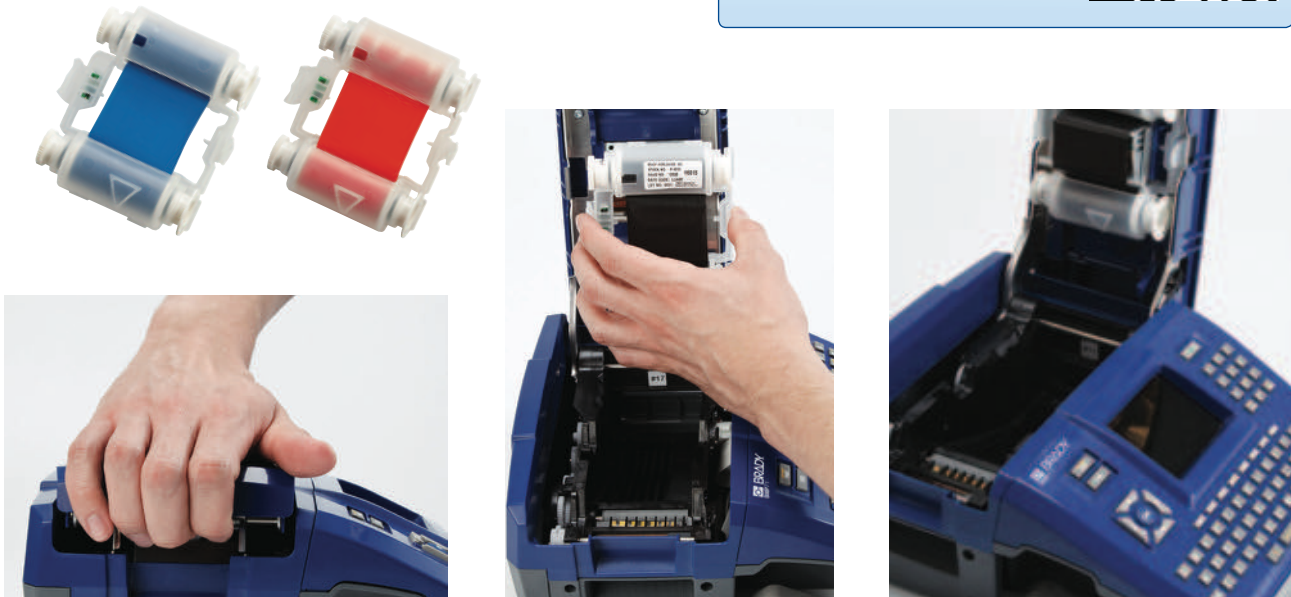
- Specific shapes and/or dimensions
- Specific colouring: material appearance through label colouring
- Specific materials to meet your requirements: chemical resistance, UV resistance, scratch resistance
- Specific printing or layout



# Ribbons

All materials in the printer work with a series of M71 ribbons that easily fit into the printer. It is recommended to insert the ribbon before loading the consumable.

Watch the how to videos on our Brady YouTube channel.

Order Reference	Colour	Roll Width (mm)	Roll Length (m)	Formulation	Notes / Details
M71-R4400-WT	White	50.80	46.00	Resin	High density ribbon with excellent solvent resistance, high heat resistance, and super scratch resistance.
M71-R6000HF	Black	50.80	46.00	Resin	High density ribbon, excellent solvent resistance, high heat resistance, and super scratch resistance.
M71-R6200	Black	50.80	46.00	Resin	Designed for harsh environment labelling applications. Superior abrasion, chemical and heat resistance.
M71-R6400	Black	50.80	46.00	Resin	Ultra high chemical resistance at high temperatures. Superior solvent resistance.
M71-R6600	Black	50.80	46.00	Resin	Diesel resistant ribbon for thermal printing on Brady PermaSleeve and Heatex Sleeves. This ribbon has with excellent chemical and abrasion resistance
M71-R6800-WT	White	50.80	46.00	Resin	Strong environmental resistance against smearing and chemicals. Also, reliable, sharp-edge print quality to maximise bar code readability.
M71-R6900-BL	Blue	50.80	46.00	Resin	High density ribbon with excellent solvent resistance, high heat resistance, and super scratch resistance.
M71-R6900-GN	Green	50.80	46.00	Resin	High density ribbon with excellent solvent resistance, high heat resistance, and super scratch resistance.
M71-R6900-MA	Magenta	50.80	46.00	Resin	High density ribbon with excellent solvent resistance, high heat resistance, and super scratch resistance.
M71-R6900-RD	Red	50.80	46.00	Resin	High density ribbon with excellent solvent resistance, high heat resistance, and super scratch resistance.
M71-R6900-YL	Yellow	50.80	46.00	Resin	High density ribbon with excellent solvent resistance, high heat resistance, and super scratch resistance.
M71-R4300	Black	50.80	46.00	Wax/Resin	Strong environmental resistance against smearing and chemicals. Also, reliable, sharp-edge print quality to maximise bar code readability.
M71-R6700-WT	White	50.80	46.00	Wax/Resin	The White 6700 Series Thermal Transfer Ribbon offers high performance against scratching, smudging, and harsh chemicals. The ribbon can be used for printing on Brady's Black PermaSleeve™ materials

## Smart-Cell Technology



With smart-cell technology built into label rolls and ribbons, the printer is able to automatically format the label and place objects so that there is no guess work on your part. If the label material & ribbon are not compatible, the screen will show an error message.



## Wire & cable marking



### PermaSleeve heat-shrink sleeve markers

- These heat-shrink sleeves are the ultimate in marker identification, protection, durability and aesthetic appearance.
- Fast shrink rate saves time and costs during installation.

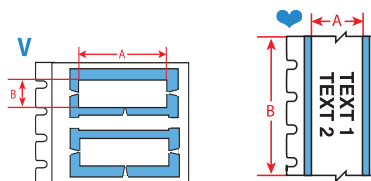


Diagram	Order Reference	Shrink Ratio	Colour	Sleeve Width A (mm)	Sleeve Height B (mm)	Min. Wire Diameter (mm)	Max. Wire Diameter (mm)	Sleeves per roll	Printer Ribbon Series	Printer Compatibility
<b>B-342: Heat-shrink Polyolefin Sleeve</b>										
♥	BM71C-125-342	3:1	White	6.00	-	1.17	2.79	1	M71-R4300	BMP71
♥	BM71C-187-342	3:1	White	8.50	-	1.57	3.81	1	M71-R4300	BMP71
♥	BM71C-250-342	3:1	White	11.15	-	2.39	5.46	1	M71-R4300	BMP71
♥	BM71C-375-342	3:1	White	16.40	-	3.18	8.13	1	M71-R4300	BMP71
♥	BM71C-500-342	3:1	White	21.60	-	4.75	11.43	1	M71-R4300	BMP71
♥	BM71C-1000-342	3:1	White	42.16	-	9.53	24.13	1	M71-R4300	BMP71
V	BM71-94-1-342-2	3:1	White	12.70	4.60	0.58	2.03	5000	R4300	M611, BMP61, BMP71
V	BM71-94-175-342-2	3:1	White	22.22	4.60	0.58	2.03	5000	R4300	M611, BMP61, BMP71
V	BM71-94-1-342	3:1	White	25.78	4.60	0.58	2.03	2500	R4300	M611, BMP61, BMP71
V	M71-94-1-342YL	3:1	Yellow	25.78	4.60	0.58	2.03	100	M71-R4300	BMP71
V	BM71-94-1-342YL	3:1	Yellow	25.78	4.60	0.58	2.03	2500	R4300	M611, BMP61, BMP71
V	M71-94-175-342	3:1	White	44.83	4.60	0.58	2.03	100	M71-R4300	BMP71
V	BM71-94-175-342	3:1	White	44.83	4.60	0.58	2.03	2500	R4300	M611, BMP61, BMP71
V	M71-94-175-342YL	3:1	Yellow	44.83	4.60	0.58	2.03	100	M71-R4300	BMP71
V	BM71-94-175-342YL	3:1	Yellow	44.83	4.60	0.58	2.03	2500	R4300	M611, BMP61, BMP71
V	M71-94-1-342	3:1	White	25.78	4.62	0.58	2.03	100	M71-R4300	BMP71
V	BM71-125-1-342-2	3:1	White	12.70	6.00	1.17	2.79	2000	R4300	M611, BMP61, BMP71
V	BM71-125-175-342-3	3:1	White	14.94	6.00	1.17	2.79	3000	R4300	M611, BMP61, BMP71
V	BM71-125-175-342-2	3:1	White	22.22	6.00	1.17	2.79	2000	R4300	M611, BMP61, BMP71
V	BM71-125-1-342	3:1	White	25.78	6.00	1.17	2.79	1000	R4300	M611, BMP61, BMP71
V	M71-125-1-342	3:1	White	25.78	6.00	1.17	2.79	100	M71-R4300	BMP71
V	M71-125-1-342YL	3:1	Yellow	25.78	6.00	1.17	2.79	100	M71-R4300	BMP71
V	BM71-125-1-342-YL	3:1	Yellow	25.78	6.00	1.17	2.79	1000	R4300	M611, BMP61, BMP71
V	M71-125-175-342	3:1	White	44.83	6.00	1.17	2.79	100	M71-R4300	BMP71
V	BM71-125-175-342	3:1	White	44.83	6.00	1.17	2.79	1000	R4300	M611, BMP61, BMP71
V	M71-125-175-342YL	3:1	Yellow	44.83	6.00	1.17	2.79	100	M71-R4300	BMP71
V	BM71-125-175-342YL	3:1	Yellow	44.83	6.00	1.17	2.79	1000	R4300	M611, BMP61, BMP71
V	BM71-187-175-342-4	3:1	White	11.21	8.50	1.57	3.81	4000	R4300	M611, BMP61, BMP71
V	BM71-187-1-342-2	3:1	White	12.70	8.50	1.57	3.81	2000	R4300	M611, BMP61, BMP71
V	BM71-187-175-342-3	3:1	White	14.94	8.50	1.57	3.81	3000	R4300	M611, BMP61, BMP71
V	BM71-187-175-342-2	3:1	White	22.22	8.50	1.57	3.81	2000	R4300	M611, BMP61, BMP71
V	M71-187-1-342	3:1	White	25.78	8.50	1.57	3.81	100	M71-R4300	BMP71
V	BM71-187-1-342	3:1	White	25.78	8.50	1.57	3.81	1000	R4300	M611, BMP61, BMP71
V	M71-187-1-342YL	3:1	Yellow	25.78	8.50	1.57	3.81	100	M71-R4300	BMP71
V	BM71-187-1-342-YL	3:1	Yellow	25.78	8.50	1.57	3.81	1000	R4300	M611, BMP61, BMP71
V	BM71-187-175-342-ORG	3:1	Orange	44.83	8.50	1.57	3.81	1000	R4300	M611, BMP61, BMP71
V	BM71-187-175-342-RD	3:1	Red	44.83	8.50	1.57	3.81	1000	R4300	M611, BMP61, BMP71
V	BM71-187-175-342	3:1	White	44.83	8.50	1.57	3.81	1000	R4300	M611, BMP61, BMP71
V	M71-187-175-342	3:1	White	44.83	8.50	1.57	3.81	100	M71-R4300	BMP71
V	M71-187-175-342YL	3:1	Yellow	44.83	8.50	1.57	3.81	100	M71-R4300	BMP71

Order references beginning with "B" indicate bulk rolls.

>>

## Wire & cable marking

### PermaSleeve heat-shrink sleeve markers (Continued)

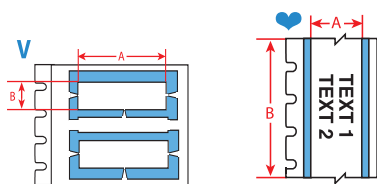


Diagram	Order Reference	Shrink Ratio	Colour	Sleeve Width A (mm)	Sleeve Height B (mm)	Min. Wire Diameter (mm)	Max. Wire Diameter (mm)	Sleeves per roll	Printer Ribbon Series	Printer Compatibility
V	BM71-187-175-342YL	3:1	Yellow	44.83	8.50	1.57	3.81	1000	R4300	M611, BMP61, BMP71
V	BM71-250-1-342	3:1	White	25.78	11.15	2.39	5.46	1000	R4300	M611, BMP61, BMP71
V	M71-250-1-342	3:1	White	25.78	11.15	2.39	5.46	100	M71-R4300	BMP71
V	M71-250-1-342YL	3:1	Yellow	25.78	11.15	2.39	5.46	100	M71-R4300	BMP71
V	BM71-250-1-342-YL	3:1	Yellow	25.78	11.15	2.39	5.46	1000	R4300	M611, BMP61, BMP71
V	BM71-250-175-342-RD	3:1	Red	44.83	11.15	2.39	5.46	1000	R4300	M611, BMP61, BMP71
V	BM71-250-175-342	3:1	White	44.83	11.15	2.39	5.46	1000	R4300	M611, BMP61, BMP71
V	M71-250-175-342	3:1	White	44.83	11.15	2.39	5.46	100	M71-R4300	BMP71
V	M71-250-175-342YL	3:1	Yellow	44.83	11.15	2.39	5.46	100	M71-R4300	BMP71
V	BM71-250-175-342YL	3:1	Yellow	44.83	11.15	2.39	5.46	1000	R4300	M611, BMP61, BMP71
V	BM71-375-1-342-2	3:1	White	12.70	16.40	3.18	8.13	2000	R4300	M611, BMP61, BMP71
V	BM71-375-175-342-2	3:1	White	22.22	16.40	3.18	8.13	2000	R4300	M611, BMP61, BMP71
V	M71-375-1-342	3:1	White	25.78	16.40	3.18	8.13	100	M71-R4300	BMP71
V	BM71-375-1-342	3:1	White	25.78	16.40	3.18	8.13	1000	R4300	M611, BMP61, BMP71
V	M71-375-1-342YL	3:1	Yellow	25.78	16.40	3.18	8.13	100	M71-R4300	BMP71
V	BM71-375-1-342-YL	3:1	Yellow	25.78	16.40	3.18	8.13	1000	R4300	M611, BMP61, BMP71
V	M71-375-175-342	3:1	White	44.83	16.40	3.18	8.13	100	M71-R4300	BMP71
V	BM71-375-175-342	3:1	White	44.83	16.40	3.18	8.13	1000	R4300	M611, BMP61, BMP71
V	M71-375-175-342YL	3:1	Yellow	44.83	16.40	3.18	8.13	100	M71-R4300	BMP71
V	BM71-375-175-342-YL	3:1	Yellow	44.83	16.40	3.18	8.13	1000	R4300	M611, BMP61, BMP71
V	BM71-500-175-342-YL-3	3:1	Yellow	14.94	21.60	4.75	11.43	3000	R4300	M611, BMP61, BMP71
V	M71-500-1-342	3:1	White	25.78	21.60	4.75	11.43	100	M71-R4300	BMP71
V	BM71-500-1-342	3:1	White	25.78	21.60	4.75	11.43	1000	R4300	M611, BMP61, BMP71
V	M71-500-1-342YL	3:1	Yellow	25.78	21.60	4.75	11.43	100	M71-R4300	BMP71
V	BM71-500-1-342YL	3:1	Yellow	25.78	21.60	4.75	11.43	1000	R4300	M611, BMP61, BMP71
V	BM71-500-175-342-RD	3:1	Red	44.83	21.60	4.75	11.43	1000	M71-R4300	M611, BMP61, BMP71
V	M71-500-175-342	3:1	White	44.83	21.60	4.75	11.43	100	M71-R4300	BMP71
V	BM71-500-175-342	3:1	White	44.83	21.60	4.75	11.43	1000	R4300	M611, BMP61, BMP71
V	M71-500-175-342YL	3:1	Yellow	44.83	21.60	4.75	11.43	100	M71-R4300	BMP71
V	BM71-500-175-342YL	3:1	Yellow	44.83	21.60	4.75	11.43	1000	R4300	M611, BMP61, BMP71
V	M71-1000-1-342	3:1	White	25.78	42.16	9.53	24.13	50	M71-R4300	BMP71
V	M71-1000-1-342YL	3:1	Yellow	25.78	42.16	9.53	24.13	50	M71-R4300	BMP71
V	BM71-1000-175-342	3:1	White	44.83	42.16	9.53	24.13	500	R4300	M611, BMP61, BMP71
V	M71-1000-175-342	3:1	White	44.83	42.16	9.53	24.13	50	M71-R4300	BMP71
V	M71-1000-175-342YL	3:1	Yellow	44.83	42.16	9.53	24.13	50	M71-R4300	BMP71

Order references beginning with "B" indicate bulk rolls.



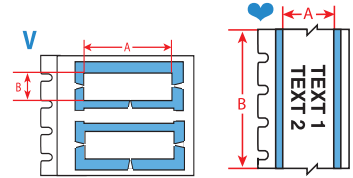
See pages 49 - 51 for a detailed material index.

## Wire & cable marking

### PermaSleeve low smoke zero halogen wire marking sleeves, 2:1 shrink ratio



- These heat-shrink sleeves are the ultimate in marker identification, protection, durability and aesthetic appearance.
- These low smoke zero halogen wire marking sleeves offer outstanding fire safety properties and minimal smoke emission.
- Fast shrink rate saves time and costs during installation. Available as individual die-cut markers or continuous cut-to-length tubing.



Sleeves are shown in order of sleeve height and per sleeve width.

Diagram	Order Reference	Shrink Ratio	Colour	Sleeve Width A (mm)	Sleeve Height B (mm)	Min. Wire Diameter (mm)	Max. Wire Diameter (mm)	Sleeves per roll	Printer Ribbon Series	Printer Compatibility
B-7641: Heat-shrink Polyolefin Sleeve										
♥	BM71C-125-7641	2:1	White	6.00	-	1.57	2.79	1	M71-R6600	BMP71
♥	BM71C-125-7641YL	2:1	Yellow	6.00	-	1.57	2.79	1	M71-R6600	BMP71
♥	BM71C-187-7641	2:1	White	8.50	-	2.39	3.83	1	M71-R6600	BMP71
♥	BM71C-187-7641YL	2:1	Yellow	8.50	-	2.39	3.83	1	M71-R6600	BMP71
♥	BM71C-250-7641	2:1	White	11.15	-	3.17	5.46	1	M71-R6600	BMP71
♥	BM71C-250-7641YL	2:1	Yellow	11.15	-	3.17	5.46	1	M71-R6600	BMP71
♥	BM71C-375-7641	2:1	White	16.40	-	4.77	8.13	1	M71-R6600	BMP71
♥	BM71C-375-7641YL	2:1	Yellow	16.40	-	4.77	8.13	1	M71-R6600	BMP71
♥	BM71C-500-7641	2:1	White	21.60	-	6.35	11.43	1	M71-R6600	BMP71
♥	BM71C-500-7641YL	2:1	Yellow	21.60	-	6.35	11.43	1	M71-R6600	BMP71
♥	BM71C-750-7641	2:1	White	31.40	-	9.52	17.78	1	M71-R6600	BMP71
♥	BM71C-750-7641YL	2:1	Yellow	31.40	-	9.52	17.78	1	M71-R6600	BMP71
V	M71-94-1-7641	2:1	White	25.78	4.60	1.19	2.03	100	M71-R6600	BMP71
V	BM71-94-1-7641	2:1	White	25.78	4.60	1.19	2.03	2500	M71-R6600	BMP71
V	M71-94-1-7641Y	2:1	Yellow	25.78	4.60	1.19	2.03	100	M71-R6600	BMP71
V	BM71-94-1-7641Y	2:1	Yellow	25.78	4.60	1.19	2.03	2500	M71-R6600	BMP71
V	M71-94-175-7641	2:1	White	44.83	4.60	1.19	2.03	100	M71-R6600	BMP71
V	BM71-94-175-7641	2:1	White	44.83	4.60	1.19	2.03	2500	M71-R6600	BMP71
V	M71-94-175-7641Y	2:1	Yellow	44.83	4.60	1.19	2.03	100	M71-R6600	BMP71
V	BM71-94-175-7641Y	2:1	Yellow	44.83	4.60	1.19	2.03	2500	M71-R6600	BMP71
V	M71-125-1-7641	2:1	White	25.78	6.00	1.57	2.79	100	M71-R6600	BMP71
V	BM71-125-1-7641	2:1	White	25.78	6.00	1.57	2.79	1000	M71-R6600	BMP71
V	M71-125-1-7641Y	2:1	Yellow	25.78	6.00	1.57	2.79	100	M71-R6600	BMP71
V	BM71-125-1-7641Y	2:1	Yellow	25.78	6.00	1.57	2.79	1000	M71-R6600	BMP71
V	M71-125-175-7641	2:1	White	44.83	6.00	1.57	2.79	100	M71-R6600	BMP71
V	BM71-125-175-7641	2:1	White	44.83	6.00	1.57	2.79	1000	M71-R6600	BMP71
V	M71-125-175-7641Y	2:1	Yellow	44.83	6.00	1.57	2.79	100	M71-R6600	BMP71
V	BM71-125-175-7641Y	2:1	Yellow	44.83	6.00	1.57	2.79	1000	M71-R6600	BMP71
V	M71-187-1-7641	2:1	White	25.78	8.50	2.39	3.83	100	M71-R6600	BMP71
V	BM71-187-1-7641	2:1	White	25.78	8.50	2.39	3.83	1000	M71-R6600	BMP71
V	M71-187-1-7641Y	2:1	Yellow	25.78	8.50	2.39	3.83	100	M71-R6600	BMP71
V	BM71-187-1-7641Y	2:1	Yellow	25.78	8.50	2.39	3.83	1000	M71-R6600	BMP71
V	M71-187-175-7641	2:1	White	44.83	8.50	2.39	3.83	100	M71-R6600	BMP71
V	BM71-187-175-7641	2:1	White	44.83	8.50	2.39	3.83	1000	M71-R6600	BMP71
V	M71-187-175-7641Y	2:1	Yellow	44.83	8.50	2.39	3.83	100	M71-R6600	BMP71
V	BM71-187-175-7641Y	2:1	Yellow	44.83	8.50	2.39	3.83	1000	M71-R6600	BMP71
V	M71-250-1-7641	2:1	White	25.78	11.15	3.17	5.46	100	M71-R6600	BMP71
V	BM71-250-1-7641	2:1	White	25.78	11.15	3.17	5.46	1000	M71-R6600	BMP71
V	M71-250-1-7641Y	2:1	Yellow	25.78	11.15	3.17	5.46	100	M71-R6600	BMP71
V	BM71-250-1-7641Y	2:1	Yellow	25.78	11.15	3.17	5.46	1000	M71-R6600	BMP71

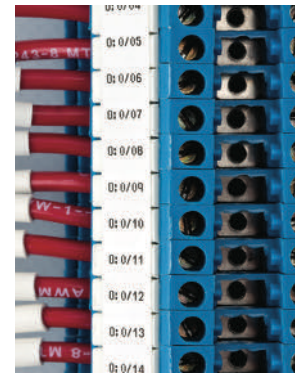
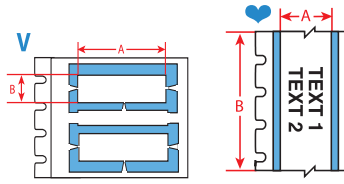
Order references beginning with "B" indicate bulk rolls.

>>



## Wire & cable marking

### PermaSleeve low smoke zero halogen wire marking sleeves, 2:1 shrink ratio (Continued)



Sleeves are shown in order of sleeve height and per sleeve width.

Diagram	Order Reference	Shrink Ratio	Colour	Sleeve Width A (mm)	Sleeve Height B (mm)	Min. Wire Diameter (mm)	Max. Wire Diameter (mm)	Sleeves per roll	Printer Ribbon Series	Printer Compatibility
V	M71-250-175-7641	2:1	White	44.83	11.15	3.17	5.46	100	M71-R6600	BMP71
V	BM71-250-175-7641	2:1	White	44.83	11.15	3.17	5.46	1000	M71-R6600	BMP71
V	M71-250-175-7641Y	2:1	Yellow	44.83	11.15	3.17	5.46	100	M71-R6600	BMP71
V	BM71-250-175-7641Y	2:1	Yellow	44.83	11.15	3.17	5.46	1000	M71-R6600	BMP71
V	BM71-375-1-7641	2:1	White	25.78	16.38	4.77	8.13	1000	M71-R6600	BMP71
V	BM71-375-1-7641Y	2:1	Yellow	25.78	16.38	4.77	8.13	1000	M71-R6600	BMP71
V	BM71-375-175-7641	2:1	White	44.83	16.38	4.77	8.13	1000	M71-R6600	BMP71
V	BM71-375-175-7641Y	2:1	Yellow	44.83	16.38	4.77	8.13	1000	M71-R6600	BMP71
V	M71-375-1-7641	2:1	White	25.78	16.40	4.77	8.13	100	M71-R6600	BMP71
V	M71-375-1-7641Y	2:1	Yellow	25.78	16.40	4.77	8.13	100	M71-R6600	BMP71
V	M71-375-175-7641	2:1	White	44.83	16.40	4.77	8.13	100	M71-R6600	BMP71
V	M71-375-175-7641Y	2:1	Yellow	44.83	16.40	4.77	8.13	100	M71-R6600	BMP71
V	M71-500-1-7641	2:1	White	25.78	21.60	6.35	11.43	100	M71-R6600	BMP71
V	BM71-500-1-7641	2:1	White	25.78	21.60	6.35	11.43	600	M71-R6600	BMP71
V	M71-500-1-7641Y	2:1	Yellow	25.78	21.60	6.35	11.43	100	M71-R6600	BMP71
V	BM71-500-1-7641Y	2:1	Yellow	25.78	21.60	6.35	11.43	600	M71-R6600	BMP71
V	M71-500-175-7641	2:1	White	44.83	21.60	6.35	11.43	100	M71-R6600	BMP71
V	BM71-500-175-7641	2:1	White	44.83	21.60	6.35	11.43	600	M71-R6600	BMP71
V	M71-500-175-7641Y	2:1	Yellow	44.83	21.60	6.35	11.43	100	M71-R6600	BMP71
V	BM71-500-175-7641Y	2:1	Yellow	44.83	21.60	6.35	11.43	600	M71-R6600	BMP71
V	M71-750-1-7641	2:1	White	25.78	31.40	9.52	17.78	75	M71-R6600	BMP71
V	BM71-750-1-7641	2:1	White	25.78	31.40	9.52	17.78	600	M71-R6600	BMP71
V	M71-750-1-7641Y	2:1	Yellow	25.78	31.40	9.52	17.78	75	M71-R6600	BMP71
V	BM71-750-1-7641Y	2:1	Yellow	25.78	31.40	9.52	17.78	600	M71-R6600	BMP71
V	M71-750-175-7641	2:1	White	44.83	31.40	9.52	17.78	75	M71-R6600	BMP71
V	BM71-750-175-7641	2:1	White	44.83	31.40	9.52	17.78	600	M71-R6600	BMP71
V	M71-750-175-7641Y	2:1	Yellow	44.83	31.40	9.52	17.78	75	M71-R6600	BMP71
V	BM71-750-175-7641Y	2:1	Yellow	44.83	31.40	9.52	17.78	600	M71-R6600	BMP71

Order references beginning with "B" indicate bulk rolls.

## Wire & cable marking



### Self-laminating labels

- Features a clear, non-printable area that wraps around the cable and serves as an overlamine to the printed text.
- Offers superior resistance to abrasion, dirt, oils, solvents and water.

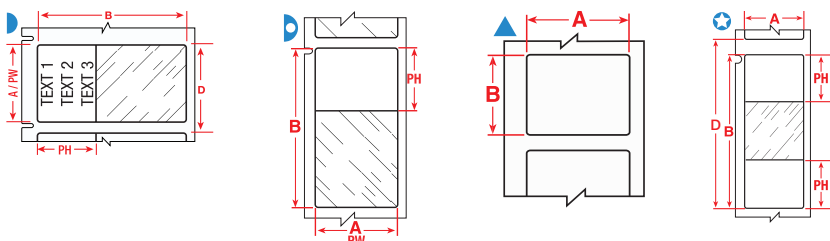


Diagram	Order Reference	Colour	Label Width A (mm)	Label Height B (mm)	Printable Area Width PW (mm)	Printable Area Height PH (mm)	Vertical Repeat D (mm)	Min. Wire Diameter (mm)	Max. Wire Diameter (mm)	Labels per Roll	Printer Ribbon Series	Printer Compatibility
B-427: Self-laminating Vinyl												
	M71-10-427	White/Transparent	6.35	19.05	6.35	9.53	9.53	2.00	3.00	750	M71-R4300	BMP71
	M71-28-427	White/Transparent	6.35	38.10	6.35	12.70	9.53	4.00	8.10	750	M71-R4300	BMP71
	BM71-11-427	White/Transparent	12.70	19.05	12.70	9.53	15.88	2.00	3.00	5000	R4300	BMP61, BMP71
	M71-11-427	White/Transparent	12.70	19.05	12.70	9.53	15.88	2.00	3.00	500	M71-R4300	BMP71
	BM71-17-427	White/Transparent	12.70	25.40	12.70	9.53	15.88	2.70	5.10	5000	R4300	BMP61, BMP71
	M71-17-427	White/Transparent	12.70	25.40	12.70	9.53	15.88	2.70	5.10	500	M71-R4300	BMP71
	M71-29-427	White/Transparent	12.70	38.10	12.70	12.70	15.88	4.00	8.10	500	M71-R4300	BMP71
	BM71-29-427	White/Transparent	12.70	38.10	12.70	12.70	15.88	4.00	8.10	5000	R4300	BMP61, BMP71
	BM71-18-427	White/Transparent	19.05	25.40	19.05	9.53	22.23	2.70	5.10	2500	R4300	BMP61, BMP71
	M71-18-427	White/Transparent	19.05	25.40	19.05	9.53	22.23	2.70	5.10	250	M71-R4300	BMP71
	M71-30-427	White/Transparent	19.05	38.10	19.05	12.70	22.23	4.00	8.10	250	M71-R4300	BMP71
	BM71-30-427	White/Transparent	19.05	38.10	19.05	12.70	22.23	4.00	8.10	2500	R4300	BMP61, BMP71
	M71-30-427-BL	Blue/Transparent	19.05	38.10	19.05	12.70	22.23	4.00	8.10	250	M71-R4300	BMP71
	M71-30-427-PL	Purple/Transparent	19.05	38.10	19.05	12.70	22.23	4.00	8.10	250	M71-R4300	BMP71
	M71-30-427-RD	Red/Transparent	19.05	38.10	19.05	12.70	22.23	4.00	8.10	250	M71-R4300	BMP71
	M71-96-427	White/Transparent	25.40	19.05	25.40	9.53	22.23	2.00	3.00	250	M71-R4300	BMP71
	M71-19-427-YL	Yellow/Transparent	25.40	25.40	25.40	9.53	28.58	2.70	5.10	250	M71-R4300	BMP71
	M71-19-427	White/Transparent	25.40	25.40	25.40	9.53	28.58	2.70	5.10	250	M71-R4300	BMP71
	BM71-19-427	White/Transparent	25.40	25.40	25.40	9.53	28.58	2.70	5.10	2500	R4300	BMP61, BMP71
	M71-103-427	White/Transparent	25.40	31.75	25.40	12.70	34.93	3.40	6.10	250	M71-R4300	BMP71
	M71-31-427-YL	Yellow/Transparent	25.40	38.10	25.40	12.70	28.58	4.00	8.10	250	M71-R4300	BMP71
	BM71-31-427	White/Transparent	25.40	38.10	25.40	12.70	28.58	4.00	8.10	2500	R4300	BMP61, BMP71
	M71-31-427-GN	Green/Transparent	25.40	38.10	25.40	12.70	28.58	4.00	8.10	250	M71-R4300	BMP71
	M71-31-427-RD	Red/Transparent	25.40	38.10	25.40	12.70	28.58	4.00	8.10	250	M71-R4300	BMP71
	M71-31-427	White/Transparent	25.40	38.10	25.40	12.70	28.58	4.00	8.10	250	M71-R4300	BMP71
	BM71-21-427	White/Transparent	25.40	63.50	25.40	19.05	66.68	6.70	14.20	1000	R4300	BMP61, BMP71

Order references beginning with "B" indicate bulk rolls. \*Order references ending with "AW" indicate all white labels with no clear area.

>>



Apply the printed area to your wire.



Wrap the clear area around the wire, covering the printed area.



Once applied the clear laminate will protect your legend for years to come.

## Wire & cable marking

### Self-laminating labels (continued)

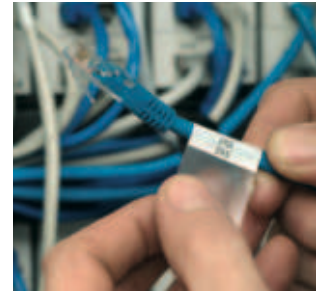
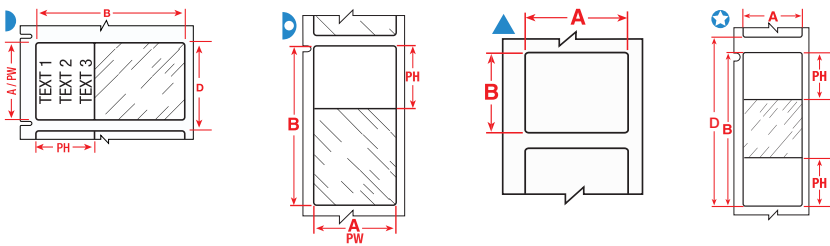


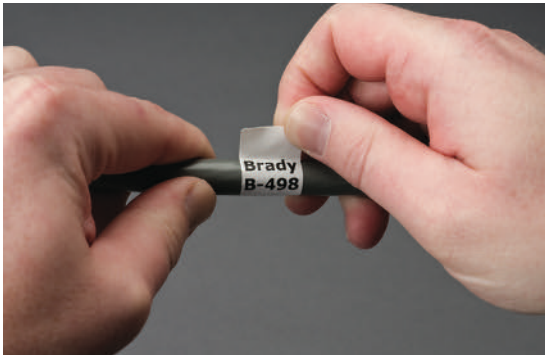
Diagram	Order Reference	Colour	Label Width A (mm)	Label Height B (mm)	Printable Area Width PW (mm)	Printable Area Height PH (mm)	Vertical Repeat D (mm)	Min. Wire Diameter (mm)	Max. Wire Diameter (mm)	Labels per Roll	Printer Ribbon Series	Printer Compatibility
▶	M71-21-427-YL	Yellow/Transparent	25.40	63.50	25.40	19.05	66.68	6.70	14.20	100	M71-R4300	BMP71
▶	M71-21-427	White/Transparent	25.40	63.50	25.40	19.05	66.68	6.70	14.20	100	M71-R4300	BMP71
★	BM71-64-427	White/Transparent	25.40	85.73	25.40	28.58	88.90	9.10	18.20	1000	R4300	BMP61, BMP71
★	M71-64-427	White/Transparent	25.40	85.73	25.40	28.58	88.90	9.10	18.20	100	M71-R4300	BMP71
▶	BM71-23-427	White/Transparent	25.40	101.60	25.40	25.40	104.78	10.80	24.30	1000	R4300	BMP61, BMP71
▶	M71-23-427	White/Transparent	25.40	101.60	25.40	25.40	104.78	10.80	24.30	100	M71-R4300	BMP71
▲	M71-30-427-AW	White	38.10	19.05	38.10	19.05	22.23	4.00	8.00	250	M71-R4300	BMP71
▶	M71-104-427	White/Transparent	38.10	25.40	38.10	9.53	28.58	2.70	5.10	250	M71-R4300	BMP71
▶	BM71-32-427	White/Transparent	38.10	38.10	38.10	12.70	41.28	4.00	8.10	1000	R4300	BMP61, BMP71
▶	M71-32-427-YL	Yellow/Transparent	38.10	38.10	38.10	12.70	41.28	4.00	8.10	250	M71-R4300	BMP71
▶	M71-32-427	White/Transparent	38.10	38.10	38.10	12.70	41.28	4.00	8.10	250	M71-R4300	BMP71
▶	M71-33-427-YL	Yellow/Transparent	38.10	101.60	38.10	25.40	104.78	10.80	24.30	100	M71-R4300	BMP71
▶	BM71-33-427	White/Transparent	38.10	101.60	38.10	25.40	104.78	10.80	24.30	500	R4300	BMP61, BMP71
▶	M71-109-427	White/Transparent	38.10	101.60	38.10	38.10	104.78	10.80	20.20	100	M71-R4300	BMP71
▶	BM71-109-427	White/Transparent	38.10	101.60	38.10	38.10	104.78	10.80	20.20	500	R4300	BMP61, BMP71
▶	M71-33-427	White/Transparent	38.10	101.60	38.10	25.40	104.78	10.80	24.30	100	M71-R4300	BMP71
▶	M71-34-427	White/Transparent	38.10	152.40	38.10	38.10	155.58	16.20	36.40	50	M71-R4300	BMP71
▶	BM71-34-427	White/Transparent	38.10	152.40	38.10	38.10	155.58	16.20	36.40	500	R4300	BMP61, BMP71
▶	M71-88-427	White/Transparent	44.45	38.10	44.45	12.70	41.28	4.00	8.10	250	M71-R4300	BMP71
▶	M71-66-427	White/Transparent	49.28	80.00	49.28	25.40	83.57	8.50	17.40	100	M71-R4300	BMP71
▶	M71-107-427	White/Transparent	50.80	38.10	50.80	12.70	53.98	4.00	8.10	100	M71-R4300	BMP71
▶	BM71-107-427	White/Transparent	50.80	38.10	50.80	12.70	53.98	4.00	8.10	1000	R4300	BMP61, BMP71
B-642: Polyvinylfluoride												
▶	M71-19-642	White/Transparent	25.40	25.40	25.40	9.53	28.58	3.00	5.00	250	M71-R4300	BMP71
▶	M71-31-642	White/Transparent	25.40	38.10	25.40	12.70	28.58	4.00	8.00	250	M71-R4300	BMP71
▶	M71-21-642	White/Transparent	25.40	63.50	25.40	19.05	66.68	6.00	14.00	100	M71-R4300	BMP71

Order references beginning with "B" indicate bulk rolls. \*Order references ending with "AW" indicate all white labels with no clear area.



See pages 49 - 51 for a detailed material index.

## Wire & cable marking



### Wrap around labels

- These durable cloth wrap around labels are available with either an adhesive that allows the markers to be removed cleanly and reapplied if necessary (B-498) or with a permanent adhesive (B-437, B-499).
- A 3 mm overlap is recommended with these materials for an ideal, long lasting solution.

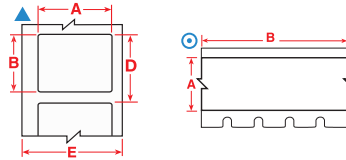


Diagram	Order Reference	Colour	Label Width A (mm)	Label Height B (mm)	Label Length B (m)	Vertical Repeat D (mm)	Max. Wire Diameter (mm)	Labels per Roll	Printer Ribbon Series	Printer Compatibility
<b>B-472: Polyimide</b>										
⊙	M71C-1000-472	White	25.40	-	15.24	-	-	1	M71-R4300; M71-R6200	BMP71
⊙	M71C-1000-472-YL	Yellow	25.40	-	15.24	-	-	1	M71-R4300; M71-R6200	BMP71
▲	M71-17-472	White	25.40	12.70	-	15.88	-	500	M71-R4300; M71-R6200	BMP71
⊙	M71C-1500-472	White	38.10	-	15.24	-	-	1	M71-R4300; M71-R6200	BMP71
⊙	M71C-1500-472-YL	Yellow	38.10	-	15.24	-	-	1	M71-R4300; M71-R6200	BMP71
▲	M71-30-472	White	38.10	19.05	-	22.23	-	250	M71-R4300; M71-R6200	BMP71
⊙	M71C-2000-472	White	50.80	-	15.24	-	-	1	M71-R4300; M71-R6200	BMP71
⊙	M71C-2000-472-YL	Yellow	50.80	-	15.24	-	-	1	M71-R4300; M71-R6200	BMP71
<b>B-498: Vinyl Cloth</b>										
⊙	BM71C-240-498	White	6.10	-	83.80	-	-	1	R6200	M611, BMP61, BMP71
⊙	M71C-240-498	White	6.10	-	9.14	-	-	1	M71-R6200	BMP71
⊙	BM71C-318-498	White	8.08	-	83.80	-	-	1	R6200	M611, BMP61, BMP71
⊙	M71C-318-498	White	8.08	-	9.14	-	-	1	M71-R6200	BMP71
⊙	M71C-375-498	White	9.53	-	9.14	-	-	1	M71-R6200	BMP71
⊙	BM71C-375-498	White	9.53	-	83.80	-	-	1	R6200	M611, BMP61, BMP71
▲	M71-16-498	White	9.53	25.40	-	12.70	6.06	500	M71-R6200	BMP71
⊙	M71C-500-498	White	12.70	-	9.10	-	-	1	M71-R6200	BMP71
▲	M71-7-498	White	12.70	12.70	-	15.88	3.03	500	M71-R6200	BMP71
▲	BM71-11-498	White	19.05	12.70	-	15.88	4.55	5000	R6200	M611, BMP61, BMP71
▲	M71-11-498	White	19.05	12.70	-	15.88	4.55	500	M71-R6200	BMP71
▲	M71-10-498	White	19.05	6.35	-	9.53	4.55	750	M71-R6200	BMP71
⊙	M71C-1000-498	White	25.40	-	9.10	-	-	1	M71-R6200	BMP71
▲	M71-17-498	White	25.40	12.70	-	15.88	6.06	500	M71-R6200	BMP71
▲	M71-18-498	White	25.40	19.05	-	22.23	6.06	250	M71-R6200	BMP71
▲	BM71-18-498	White	25.40	19.05	-	22.23	6.06	2500	R6200	M611, BMP61, BMP71
▲	M71-19-498	White	25.40	25.40	-	28.58	6.06	250	M71-R6200	BMP71
▲	BM71-19-498	White	25.40	25.40	-	28.58	6.06	2500	R6200	M611, BMP61, BMP71
▲	M71-21-498	White	25.40	63.50	-	66.68	15.60	100	M71-R6200	BMP71
▲	M71-33-498	White	38.10	101.60	-	104.78	24.26	100	M71-R6200	BMP71
▲	M71-29-498	White	38.10	12.70	-	15.88	9.10	500	M71-R6200	BMP71
▲	BM71-29-498	White	38.10	12.70	-	15.88	9.10	5000	R6200	M611, BMP61, BMP71
▲	M71-30-498	White	38.10	19.05	-	22.23	9.10	250	M71-R6200	BMP71
▲	M71-31-498	White	38.10	25.40	-	28.58	9.10	250	M71-R6200	BMP71
▲	M71-32-498	White	38.10	38.10	-	41.28	9.10	250	M71-R6200	BMP71
⊙	M71C-1900-498	White	48.26	-	9.10	-	-	1	M71-R6200	BMP71

Order references beginning with "B" indicate bulk rolls.

>>



See pages 49 - 51 for a detailed material index.



## Wire & cable marking

### Wrap around labels (Continued)

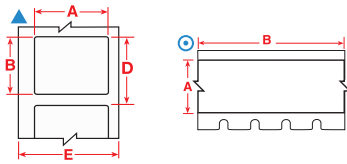


Diagram	Order Reference	Colour	Label Width A (mm)	Label Height B (mm)	Label Length B (m)	Vertical Repeat D (mm)	Max. Wire Diameter (mm)	Labels per Roll	Printer Ribbon Series	Printer Compatibility
B-499: Nylon Cloth										
▲	M71-16-499	White	9.53	25.40	-	12.70	6.06	500	M71-R4300	BMP71
◎	M71C-500-499	White	12.70	-	9.10	-	-	1	M71-R4300	BMP71
▲	M71-7-499	White	12.70	12.70	-	15.88	3.03	500	M71-R4300	BMP71
▲	M71-67-499-YL	Yellow	15.00	9.00	-	-	-	750	M71-R4300	BMP71
▲	M71-41-499-YL	Yellow	16.00	5.00	-	-	-	750	M71-R4300	BMP71
▲	BM71-11-499	White	19.05	12.70	-	15.88	4.55	5000	R4310	M611, BMP61, BMP71
▲	M71-11-499	White	19.05	12.70	-	15.88	4.55	500	M71-R4300	BMP71
▲	M71-84-499	White	22.86	12.70	-	15.88	6.06	500	M71-R4300	BMP71
◎	M71C-1000-499	White	25.40	-	9.10	-	-	1	M71-R4300	BMP71
▲	M71-18-499	White	25.40	19.05	-	22.23	6.06	250	M71-R4300	BMP71
▲	M71-19-499	White	25.40	25.40	-	28.58	6.06	250	M71-R4300	BMP71
▲	M71-21-499	White	25.40	63.50	-	66.68	15.60	100	M71-R4300	BMP71
▲	M71-29-499	White	38.10	12.70	-	15.88	9.10	500	M71-R4300	BMP71
▲	M71-30-499	White	38.10	19.05	-	22.23	9.10	250	M71-R4300	BMP71
▲	M71-31-499	White	38.10	25.40	-	28.58	9.10	250	M71-R4300	BMP71
▲	M71-28-499	White	38.10	6.35	-	9.53	9.10	750	M71-R4300	BMP71
◎	M71C-1900-499	White	48.26	-	9.10	-	-	1	M71-R4300	BMP71
▲	M71-78-499	White	48.26	25.40	-	28.58	10.00	250	M71-R4300	BMP71
▲	M71-81-499	White	48.26	6.35	-	9.53	10.00	750	M71-R4300	BMP71

Order references beginning with "B" indicate bulk rolls.

### Fibre optic labels/flags

- These fibre optic flags allow more legible information to be printed on smaller diameter wires and permit you to handle and view labels without touching the wires.

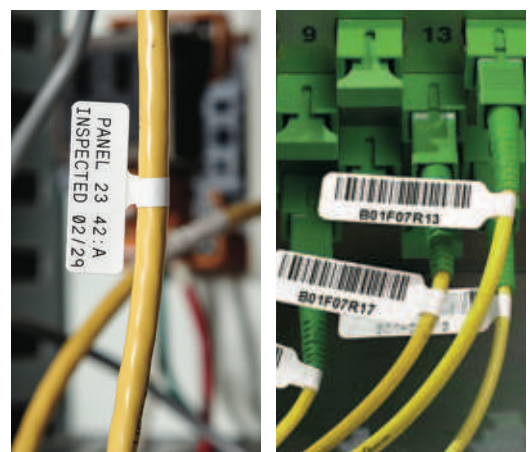
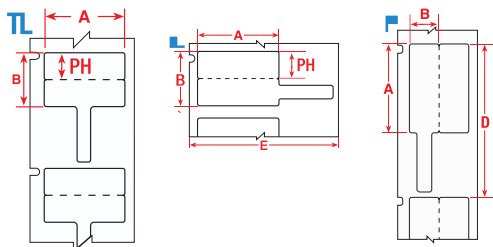
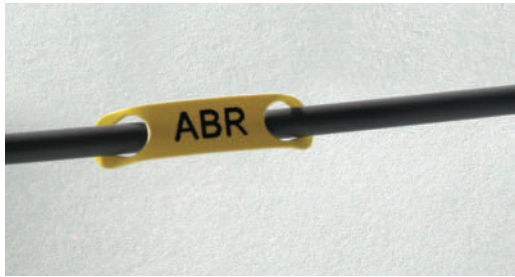


Diagram	Order Reference	Colour	Label Width A (mm)	Label Height B (mm)	Printable Area Height PH (mm)	Vertical Repeat D (mm)	Labels per Roll	Printer Ribbon Series	Printer Compatibility
B-425: Polypropylene									
■	M71FP-1-425	White	30.00	10.00	-	23.50	250	M71-R4300	BMP71
TL	M71FT-1-425	White	30.00	20.00	10.00	43.56	250	M71-R4300	BMP71
■	M71FP-2-425	White	44.45	12.70	-	66.68	100	M71-R4300	BMP71

## Wire & cable marking



### RAPIDO plastic wiremarkers

- Yellow coated polyethylene tag suitable for durable wire marking for electrical devices and fibre installations.

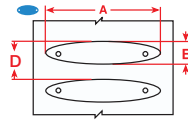


Diagram	Order Reference	Colour	Label Width A (mm)	Label Height B (mm)	Max. Lines of Text	Max. Characters per Line	Vertical Repeat D (mm)	Min. Wire Diameter (mm)	Max. Wire Diameter (mm)	Labels per Roll	Printer Ribbon Series	Printer Compatibility
B-7599: Polyethylene Tag												
	BM71R-1-7599-YL	Yellow	22.90	5.20	1	11	8.38	0.25	1.50	2500	R6200	M611, BMP61, BMP71
	BM71R-2-7599-YL	Yellow	23.00	5.20	1	8	8.38	0.75	2.60	2500	R6200	M611, BMP61, BMP71
	BM71R-3-7599-YL	Yellow	25.00	5.70	2	7	8.89	1.25	3.30	2500	R6200	M611, BMP61, BMP71
	BM71R-4-7599-YL	Yellow	26.00	7.00	2	7	10.82	1.75	4.60	2500	R6200	M611, BMP61, BMP71
	BM71R-5-7599-YL	Yellow	41.00	11.00	3	17	14.20	2.25	7.50	2500	R6200	M611, BMP61, BMP71

Order references beginning with "B" indicate bulk rolls.



### Tear resistant cable markers

- These extremely tear resistant cable markers can be used for a variety of applications including identification of multiconductor cables, inventory and equipment.

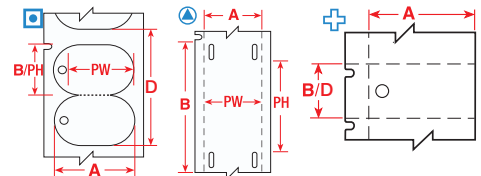


Diagram	Order Reference	Colour	Label Width A (mm)	Label Height B (mm)	Printable Area Width PW (mm)	Printable Area Height PH (mm)	Vertical Repeat D (mm)	Labels per Roll	Printer Ribbon Series	Printer Compatibility
B-109: Polyethylene Tag										
	M71-60-109	White	12.00	50.00	12.00	33.00	50.17	100	M71-R4300	BMP71
	BM71-60-109	White	12.00	50.00	12.00	33.00	50.17	1000	R4300	M611, BMP61, BMP71
	M71-12-109	White	19.05	76.20	17.78	52.07	76.20	100	M71-R4300	BMP71
	BM71-12-109	White	19.05	76.20	17.78	52.07	76.20	1000	R4300	M611, BMP61, BMP71
	M71-36-109	White	44.45	28.58	44.45	28.58	28.58	250	M71-R4300	BMP71
B-145: Polyethylene Tag										
	M71-111-145-GY	Grey	30.63	19.25	20.62	19.25	58.72	100	M71-R6000HF	BMP71
	M71-111-145-FR-GY	Grey	30.63	19.25	20.62	19.25	58.72	100	M71-R6000HF	BMP71
	BM71-111-145-GY	Grey	30.63	19.25	20.62	19.25	58.72	1000	M71-R6000HF	BMP71
	M71-110-145-GY	Grey	44.45	25.40	38.10	25.40	69.85	100	M71-R6000HF	BMP71
	M71-110-145-FR-GY	Grey	44.45	25.40	38.10	25.40	69.85	100	M71-R6000HF	BMP71
	BM71-110-145-GY	Grey	44.45	25.40	38.10	25.40	69.85	1000	M71-R6000HF	BMP71

Order references beginning with "B" indicate bulk rolls.

### Coloured Nylon Ties

- Perfect for colour coded applications.

Order Reference	Colour	Width (mm)	Length (mm)	Quantity
196283	Black	3.50	200.00	100
196311	Natural	3.50	200.00	100
196352	Yellow	3.50	200.00	100
196349	Blue	3.60	200.00	100
196350	Green	3.60	200.00	100
196351	Red	3.60	200.00	100



## Wire & cable marking

### B-7643 Halogen-free cable tag

- These cable markers are made of halogen-free polyurethane material.
- The markers are tough, imperishable and with a very high degree of mark permanence in almost any environment.

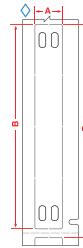
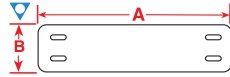


Diagram	Order Reference	Colour	Label Width A (mm)	Label Height B (mm)	Vertical Repeat D (mm)	Labels per Roll	Printer Ribbon Series	Printer Compatibility
B-7643: Thermoplastic Polyether Polyurethane								
◇	BM71-10x60-7643-BK	Black	10.00	60.00	65.09	250	R4400	M611, BMP61, BMP71
◇	BM71-10x60-7643-BL	Blue	10.00	60.00	65.09	250	R6010	M611, BMP61, BMP71
◇	BM71-10x60-7643-GN	Green	10.00	60.00	65.09	250	R6010	M611, BMP61, BMP71
◇	BM71-10x60-7643-OR	Orange	10.00	60.00	65.09	250	R6010	M611, BMP61, BMP71
◇	BM71-10x60-7643-RD	Red	10.00	60.00	65.09	250	R6010	M611, BMP61, BMP71
◇	BM71-10x60-7643-WT	White	10.00	60.00	65.09	250	R6010	M611, BMP61, BMP71
◇	BM71-10x60-7643-YL	Yellow	10.00	60.00	65.09	250	R6010	M611, BMP61, BMP71
◇	BM71-10x75-7643-BK	Black	10.00	75.00	80.43	250	R4410-WT	M611, BMP61, BMP71
◇	BM71-10x75-7643-BL	Blue	10.00	75.00	80.43	250	R6010	M611, BMP61, BMP71
◇	BM71-10x75-7643-GN	Green	10.00	75.00	80.43	250	R6010	M611, BMP61, BMP71
◇	BM71-10x75-7643-OR	Orange	10.00	75.00	80.43	250	R6010	M611, BMP61, BMP71
◇	BM71-10x75-7643-RD	Red	10.00	75.00	80.43	250	R6010	M611, BMP61, BMP71
◇	BM71-10x75-7643-WT	White	10.00	75.00	80.43	250	R6010	M611, BMP61, BMP71
◇	BM71-10x75-7643-YL	Yellow	10.00	75.00	80.43	250	R6010	M611, BMP61, BMP71
◇	BM71-15x75-7643-BK	Black	15.00	75.00	80.43	250	R4410-WT	M611, BMP61, BMP71
◇	BM71-15x75-7643-BL	Blue	15.00	75.00	80.43	250	R6010	M611, BMP61, BMP71
◇	BM71-15x75-7643-GN	Green	15.00	75.00	80.43	250	R6010	M611, BMP61, BMP71
◇	BM71-15x75-7643-OR	Orange	15.00	75.00	80.43	250	R6010	M611, BMP61, BMP71
◇	BM71-15x75-7643-RD	Red	15.00	75.00	80.43	250	R6010	M611, BMP61, BMP71
◇	BM71-15x75-7643-WT	White	15.00	75.00	80.43	250	R6010	M611, BMP61, BMP71
◇	BM71-15x75-7643-YL	Yellow	15.00	75.00	80.43	250	R6010	M611, BMP61, BMP71
◇	BM71-25x75-7643-BK	Black	25.00	75.00	80.43	250	R4410-WT	M611, BMP61, BMP71
◇	BM71-25x75-7643-BL	Blue	25.00	75.00	80.43	250	R6010	M611, BMP61, BMP71
◇	BM71-25x75-7643-GN	Green	25.00	75.00	80.43	250	R6010	M611, BMP61, BMP71
◇	BM71-25x75-7643-OR	Orange	25.00	75.00	80.43	250	R6010	M611, BMP61, BMP71
◇	BM71-25x75-7643-RD	Red	25.00	75.00	80.43	250	R6010	M611, BMP61, BMP71
◇	BM71-25x75-7643-WT	White	25.00	75.00	80.43	250	R6010	M611, BMP61, BMP71
◇	BM71-25x75-7643-YL	Yellow	25.00	75.00	80.43	250	R6010	M611, BMP61, BMP71
▽	BM71H-1-7643-WT	White	60.00	10.00	65.88	250	M71-R6000HF	BMP71
▽	BM71H-1-7643-YL	Yellow	60.00	10.00	65.88	250	M71-R6000HF	BMP71
▽	BM71H-2-7643-WT	White	75.00	10.00	81.17	250	M71-R6000HF	BMP71
▽	BM71H-2-7643-YL	Yellow	75.00	10.00	81.17	250	M71-R6000HF	BMP71
▽	BM71H-3-7643-WT	White	75.00	25.00	82.55	250	M71-R6000HF	BMP71
▽	BM71H-3-7643-YL	Yellow	75.00	25.00	82.55	250	M71-R6000HF	BMP71

Order references beginning with "B" indicate bulk rolls.

**i** See pages 49 - 51 for a detailed material index.

## Wire & cable marking



### B-7598 Polyester cable tag

The B-7598 polyester tag is a general identification tag for cables exposed to extreme conditions. It requires cable ties to apply to cables with various diameters. Common applications for this cable tag material are:

- Identification of multi-conductor cables
- Identification of cables in mobile phone towers
- Identification of datacom or telecom cables in general
- General cable identification that must be extremely resistant

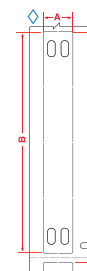


Diagram	Order Reference	Material	Colour	Label Width A (mm)	Label Height B (mm)	Vertical Repeat D (mm)	Labels per Row	Labels per Package	Ribbon Series	Printer Compatibility
◇	BM71-10x60-B7598-WT	Polyester Tag	White	10.00	60.00	65.09	1	500	R6010	M611, BMP71, BMP61
◇	BM71-10x60-B7598-YL	Polyester Tag	Yellow	10.00	60.00	65.09	1	500	R6010	M611, BMP71, BMP61
◇	BM71-10x60-B7598-GN	Polyester Tag	Green	10.00	60.00	65.09	1	500	R6010	M611, BMP71, BMP61
◇	BM71-10x60-B7598-RD	Polyester Tag	Red	10.00	60.00	65.09	1	500	R6010	M611, BMP71, BMP61
◇	BM71-10x60-B7598-SV	Polyester Tag	Silver	10.00	60.00	65.09	1	500	R6010	M611, BMP71, BMP61
◇	BM71-10x60-B7598-BK	Polyester Tag	Black	10.00	60.00	65.09	1	500	R4410-WT	M611, BMP71, BMP61
◇	BM71-10x60-B7598-BL	Polyester Tag	Blue	10.00	60.00	65.09	1	500	R6010	M611, BMP71, BMP61
◇	BM71-10x75-B7598-WT	Polyester Tag	White	10.00	75.00	80.43	1	250	R6010	M611, BMP71, BMP61
◇	BM71-10x75-B7598-YL	Polyester Tag	Yellow	10.00	75.00	80.43	1	250	R6010	M611, BMP71, BMP61
◇	BM71-10x75-B7598-GN	Polyester Tag	Green	10.00	75.00	80.43	1	250	R6010	M611, BMP71, BMP61
◇	BM71-10x75-B7598-RD	Polyester Tag	Red	10.00	75.00	80.43	1	250	R6010	M611, BMP71, BMP61
◇	BM71-10x75-B7598-SV	Polyester Tag	Silver	10.00	75.00	80.43	1	250	R6010	M611, BMP71, BMP61
◇	BM71-10x75-B7598-BK	Polyester Tag	Black	10.00	75.00	80.43	1	250	R4410-WT	M611, BMP71, BMP61
◇	BM71-10x75-B7598-BL	Polyester Tag	Blue	10.00	75.00	80.43	1	250	R6010	M611, BMP71, BMP61
◇	BM71-15x75-B7598-WT	Polyester Tag	White	15.00	75.00	80.43	1	250	R6010	M611, BMP71, BMP61
◇	BM71-15x75-B7598-YL	Polyester Tag	Yellow	15.00	75.00	80.43	1	250	R6010	M611, BMP71, BMP61
◇	BM71-15x75-B7598-GN	Polyester Tag	Green	15.00	75.00	80.43	1	250	R6010	M611, BMP71, BMP61
◇	BM71-15x75-B7598-RD	Polyester Tag	Red	15.00	75.00	80.43	1	250	R6010	M611, BMP71, BMP61
◇	BM71-15x75-B7598-SV	Polyester Tag	Silver	15.00	75.00	80.43	1	250	R6010	M611, BMP71, BMP61
◇	BM71-15x75-B7598-BK	Polyester Tag	Black	15.00	75.00	80.43	1	250	R4410-WT	M611, BMP71, BMP61
◇	BM71-15x75-B7598-BL	Polyester Tag	Blue	15.00	75.00	80.43	1	250	R6010	M611, BMP71, BMP61
◇	BM71-25x75-B7598-WT	Polyester Tag	White	25.00	75.00	80.43	1	250	R6010	M611, BMP71, BMP61
◇	BM71-25x75-B7598-YL	Polyester Tag	Yellow	25.00	75.00	80.43	1	250	R6010	M611, BMP71, BMP61
◇	BM71-25x75-B7598-GN	Polyester Tag	Green	25.00	75.00	80.43	1	250	R6010	M611, BMP71, BMP61
◇	BM71-25x75-B7598-RD	Polyester Tag	Red	25.00	75.00	80.43	1	250	R6010	M611, BMP71, BMP61
◇	BM71-25x75-B7598-SV	Polyester Tag	Silver	25.00	75.00	80.43	1	250	R6010	M611, BMP71, BMP61
◇	BM71-25x75-B7598-BK	Polyester Tag	Black	25.00	75.00	80.43	1	250	R4410-WT	M611, BMP71, BMP61
◇	BM71-25x75-B7598-BL	Polyester Tag	Blue	25.00	75.00	80.43	1	250	R6010	M611, BMP71, BMP61

Order references beginning with "B" indicate bulk rolls.



See pages 49 - 51 for a detailed material index.



## Wire & cable marking

### DuraSleeve inserts

- Brady DuraSleeve printable inserts create a durable legend.
- Tags and inserts easily slide into the clear carriers.
- The legend can be changed before or after termination.

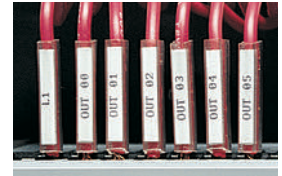
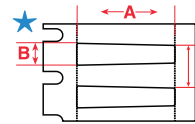


Diagram	Order Reference	Colour	Label Width A (mm)	Label Height B (mm)	Vertical Repeat D (mm)	Labels per Roll	Printer Ribbon Series	Printer Compatibility
<b>B-7696: Vinyl Tag</b>								
★	BM71D-1-7696	White	10.00	4.40	7.56	2500	R6000HF	M611, BMP61, BMP71
★	BM71D-1-7696-YL	Yellow	10.00	4.40	7.56	2500	R6000HF	M611, BMP61, BMP71
★	M71D-1-7696	White	10.00	4.40	7.56	500	M71-R6000HF	BMP71
★	M71D-1-7696-YL	Yellow	10.00	4.40	7.56	500	M71-R6000HF	BMP71
★	BM71D-2-7696	White	12.00	4.40	7.56	2500	R6000HF	M611, BMP61, BMP71
★	BM71D-2-7696-YL	Yellow	12.00	4.40	7.56	2500	R6000HF	M611, BMP61, BMP71
★	M71D-2-7696	White	12.00	4.40	7.56	500	M71-R6000HF	BMP71
★	M71D-2-7696-YL	Yellow	12.00	4.40	7.56	500	M71-R6000HF	BMP71
★	BM71D-3-7696	White	16.00	4.40	7.56	2500	R6000HF	M611, BMP61, BMP71
★	BM71D-3-7696-YL	Yellow	16.00	4.40	7.56	5000	R6000HF	M611, BMP61, BMP71
★	M71D-3-7696	White	16.00	4.40	7.56	500	M71-R6000HF	BMP71
★	BM71D-4-7696	White	23.00	4.40	7.56	2500	R6000HF	M611, BMP61, BMP71
★	BM71D-4-7696-YL	Yellow	23.00	4.40	7.56	2500	R6000HF	M611, BMP61, BMP71
★	M71D-4-7696	White	23.00	4.40	7.56	500	M71-R6000HF	BMP71
★	M71D-4-7696-YL	Yellow	23.00	4.40	7.56	500	M71-R6000HF	BMP71
★	BM71D-5-7696	White	30.00	4.40	7.56	2500	R6000HF	M611, BMP61, BMP71
★	BM71D-5-7696-YL	Yellow	30.00	4.40	7.56	5000	R6000HF	M611, BMP61, BMP71
★	M71D-5-7696	White	30.00	4.40	7.56	500	M71-R6000HF	BMP71
<b>B-7697: Polyester Tag</b>								
★	M71D-1-7697-WT	White	10.00	4.40	7.58	500	M71-R4300; M71-R6200	BMP71
★	BM61D-1-7697-WT	White	10.00	4.40	7.58	2500	R4300; R6200	M611, BMP61, BMP71
★	M71D-2-7697-WT	White	12.00	4.40	7.58	500	M71-R4300; M71-R6200	BMP71
★	BM61D-2-7697-WT	White	12.00	4.40	7.58	2500	R4300; R6200	M611, BMP61, BMP71
★	M71D-3-7697-WT	White	16.00	4.40	7.58	500	M71-R4300; M71-R6200	BMP71
★	BM61D-3-7697-WT	White	16.00	4.40	7.58	2500	R4300; R6200	M611, BMP61, BMP71
★	M71D-4-7697-WT	White	23.00	4.40	7.58	500	M71-R4300; M71-R6200	BMP71
★	BM61D-4-7697-WT	White	23.00	4.40	7.58	2500	R4300; R6200	M611, BMP61, BMP71
★	M71D-5-7697-WT	White	30.00	4.40	7.58	500	M71-R4300; M71-R6200	BMP71
★	BM61D-5-7697-WT	White	30.00	4.40	7.58	2500	R4300; R6200	M611, BMP61, BMP71

Order references beginning with "B" indicate bulk rolls.

### DuraSleeve tag carrier

DuraSleeve tag carriers are produced in transparent PVC. The special shape of the carrier allows it to adapt to cables of various diameters. There are several sizes of carriers which cater for cables with external diameters from 1.30 mm up to 15 mm.

- Temperature range: -40 °C to 60 °C
- Material: PVC

Please contact your local Brady representative to identify and select the most appropriate carrier for your individual application.

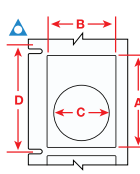
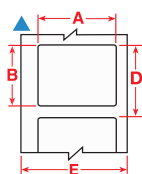


## Component & equipment marking



### EPREP: Engraved Plate REplacement Labels

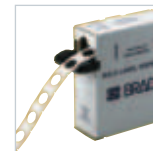
- Brady EPREP labels are innovative labels specifically designed to replace engraved and plotted plates for identification of electrical components, electrical cabinets, push buttons, patch panels etc.



Roll Mounted



Fanfolded



Bulk Roll

Diagram	Order Reference	Colour	Label Width A (mm)	Label Height B (mm)	Hole Diameter C (mm)	Vertical Repeat D (mm)	Labels per Roll	Layout	Printer Ribbon Series	Printer Compatibility
B-7593: Polyethylene Foam Laminate Polyester										
▲	M71EP-1-7593-SL	Silver	27.00	8.00	-	11.18	250	Roll Mounted	M71-R6000HF	BMP71
▲	M71EP-1-7593-WT	White	27.00	8.00	-	11.18	250	Roll Mounted	M71-R6000HF	BMP71
▲	M71EP-2-7593-SL	Silver	27.00	12.50	-	15.63	250	Roll Mounted	M71-R6000HF	BMP71
▲	M71EP-2-7593-WT	White	27.00	12.50	-	15.63	250	Roll Mounted	M71-R6000HF	BMP71
▲	M71EP-3-7593-SL	Silver	27.00	15.00	-	18.14	150	Roll Mounted	M71-R6000HF	BMP71
▲	M71EP-3-7593-WT	White	27.00	15.00	-	18.14	150	Roll Mounted	M71-R6000HF	BMP71
▲	M71EP-4-7593-SL	Silver	27.00	18.00	-	21.25	150	Roll Mounted	M71-R6000HF	BMP71
▲	M71EP-4-7593-WT	White	27.00	18.00	-	21.25	150	Roll Mounted	M71-R6000HF	BMP71
▲	M71EP-5-7593-BK	Black	30.00	40.00	24.00	50.80	100	Fan-folded	M71-R4400-WT	BMP71
▲	M71EP-5-7593-GN	Green	30.00	40.00	24.00	50.80	100	Fan-folded	M71-R6000HF	BMP71
▲	M71EP-5-7593-RD	Red	30.00	40.00	24.00	50.80	100	Fan-folded	M71-R6000HF	BMP71
▲	M71EP-5-7593-SL	Silver	30.00	40.00	24.00	50.80	100	Fan-folded	M71-R6000HF	BMP71
▲	M71EP-5-7593-WT	White	30.00	40.00	24.00	50.80	100	Fan-folded	M71-R6000HF	BMP71
▲	M71EP-5-7593-YL	Yellow	30.00	40.00	24.00	50.80	100	Fan-folded	M71-R6000HF	BMP71
▲	M71EP-7-7593-SL	Silver	35.00	18.00	-	21.49	100	Roll Mounted	M71-R6000HF	BMP71
▲	M71EP-7-7593-WT	White	35.00	18.00	-	21.49	100	Roll Mounted	M71-R6000HF	BMP71
▲	M71EP-7-7593-YL	Yellow	35.00	18.00	-	21.49	100	Roll Mounted	M71-R6000HF	BMP71
▲	M71EP-6-7593-BK	Black	45.00	15.00	-	40.37	100	Fan-folded	M71-R4400-WT	BMP71
▲	M71EP-6-7593-RD	Red	45.00	15.00	-	40.37	100	Fan-folded	M71-R6000HF	BMP71
▲	BM71E-6-7593-SL	Silver	45.00	15.00	-	18.26	500	Bulk Roll	M71-R6000HF	BMP71
▲	BM71E-6-7593-WT	White	45.00	15.00	-	18.26	500	Bulk Roll	M71-R6000HF	BMP71
▲	M71EP-6-7593-YL	Yellow	45.00	15.00	-	40.37	100	Fan-folded	M71-R6000HF	BMP71
▲	M71EP-8-7593-SL	Silver	48.00	19.00	-	22.46	125	Roll Mounted	M71-R6000HF	BMP71
▲	M71EP-8-7593-WT	White	48.00	19.00	-	22.46	125	Roll Mounted	M71-R6000HF	BMP71

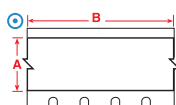


### Terminal block markers

- Repositionable vinyl cloth marker with a firm adhesive offering excellent holding power, but can be easily removed and reapplied.

Diagram	Order Reference	Colour	Label Width A (mm)	Label Length B (mm)	Labels per Roll	Printer Ribbon Series	Printer Compatibility
B-498: Vinyl Cloth							
⊙	M71C-500-498	White	12.70	9.10	1	M71-R6200	BMP71
⊙	M71C-240-498	White	6.10	9.14	1	M71-R6200	BMP71
⊙	M71C-318-498	White	8.08	9.14	1	M71-R6200	BMP71
⊙	M71C-375-498	White	9.53	9.14	1	M71-R6200	BMP71
⊙	BM71C-240-498	White	6.10	83.80	1	R6200	M611, BMP61, BMP71
⊙	BM71C-318-498	White	8.08	83.80	1	R6200	M611, BMP61, BMP71
⊙	BM71C-375-498	White	9.53	83.80	1	R6200	M611, BMP61, BMP71

Order references beginning with "B" indicate bulk rolls.



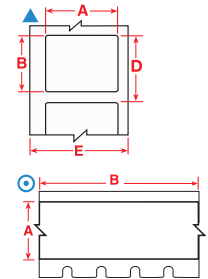
## Component & equipment marking

### Punch block and patch panel labels

- Create a fully-formatted serialised punch block label to fit your equipment.
- Label your ports, jack and outlets with adhesive labels or slide-in strips.



Diagram	Order Reference	Colour	Label Width A (mm)	Label Height B (mm)	Label Length B (m)	Vertical Repeat D (mm)	Labels per Roll	Printer Ribbon Series	Printer Compatibility
<b>B-412: Polypropylene Tag</b>									
⊙	M71C-230-412	White	5.84	-	15.24	-	1	M71-R6200	BMP71
⊙	M71C-375-412	White	9.53	-	15.24	-	1	M71-R6200	BMP71
⊙	M71C-475-412	White	12.07	-	15.24	-	1	M71-R6200	BMP71
⊙	M71C-500-412	White	12.70	-	15.24	-	1	M71-R6200	BMP71
⊙	M71C-625-412	White	15.88	-	15.24	-	1	M71-R6200	BMP71
⊙	M71C-785-412	White	19.94	-	15.24	-	1	M71-R6200	BMP71
<b>B-422: Polyester</b>									
▲	M71-30-422	White	38.10	19.05	-	22.23	250	M71-R6000HF	BMP71
▲	M71-45-422	White	38.10	9.53	-	12.70	500	M71-R6000HF	BMP71
⊙	M71C-375-422	White	9.53	-	15.24	-	1	M71-R6000HF	BMP71
⊙	M71C-475-422	White	12.07	-	15.24	-	1	M71-R6000HF	BMP71
⊙	M71C-500-422	White	12.70	-	15.24	-	1	M71-R6000HF	BMP71
⊙	M71C-625-422	White	15.88	-	15.24	-	1	M71-R6000HF	BMP71
⊙	M71C-1000-422	White	25.40	-	15.24	-	1	M71-R6000HF	BMP71
<b>B-423: Polyester</b>									
▲	M71-1-423	White	6.35	6.35	-	9.53	750	M71-R6000HF	BMP71
▲	M71-3-423	White	9.53	9.53	-	12.70	500	M71-R6000HF	BMP71
▲	M71-4-423	White	10.16	10.16	-	13.34	500	M71-R6000HF	BMP71
▲	M71-5-423	White	12.70	5.08	-	8.26	750	M71-R6000HF	BMP71
▲	M71-6-423	White	12.70	6.99	-	10.16	750	M71-R6000HF	BMP71
▲	M71-7-423	White	12.70	12.70	-	15.88	500	M71-R6000HF	BMP71
▲	BM71-7-423	White	12.70	12.70	-	15.88	5000	R6000HF	M611, BMP61, BMP71
▲	M71-9-423	White	16.51	5.08	-	8.26	750	M71-R6000HF	BMP71
▲	M71-10-423	White	19.05	6.35	-	9.53	750	M71-R6000HF	BMP71
▲	M71-13-423	White	22.86	6.35	-	9.53	750	M71-R6000HF	BMP71
▲	M71-14-423	White	25.40	4.75	-	8.26	750	M71-R6000HF	BMP71
▲	M71-15-423	White	25.40	6.99	-	10.16	750	M71-R6000HF	BMP71
▲	BM71-17-423	White	25.40	12.70	-	15.88	5000	R6000HF	M611, BMP61, BMP71
▲	BM71-16-423	White	25.40	9.53	-	12.70	5000	R6000HF	M611, BMP61, BMP71
▲	BM71-19-423	White	25.40	25.40	-	28.58	2500	R6000HF	M611, BMP61, BMP71
▲	M71-16-423	White	25.40	9.53	-	12.70	500	M71-R6000HF	BMP71
▲	M71-17-423	White	25.40	12.70	-	15.88	500	M71-R6000HF	BMP71
▲	M71-19-423	White	25.40	25.40	-	28.58	250	M71-R6000HF	BMP71
▲	M71-25-423	White	31.75	6.35	-	9.53	750	M71-R6000HF	BMP71
▲	M71-27-423	White	38.10	3.18	-	6.35	750	M71-R6000HF	BMP71
▲	M71-28-423	White	38.10	6.35	-	9.53	750	M71-R6000HF	BMP71
▲	M71-29-423	White	38.10	12.70	-	15.88	500	M71-R6000HF	BMP71
▲	M71-32-423	White	38.10	38.10	-	41.28	250	M71-R6000HF	BMP71
▲	BM71-29-423	White	38.10	12.70	-	15.88	5000	R6000HF	M611, BMP61, BMP71
▲	M71-31-423	White	38.10	25.40	-	28.58	250	M71-R6000HF	BMP71
⊙	M71C-500-423	White	12.70	-	15.24	-	1	M71-R6000HF	BMP71



Order references beginning with "B" indicate bulk rolls.

>>



See pages 49 - 51 for a detailed material index.

## Component & equipment marking

### Punch block and patch panel labels (Continued)

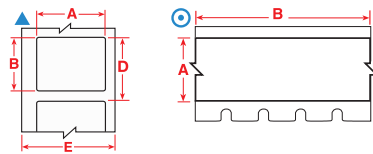
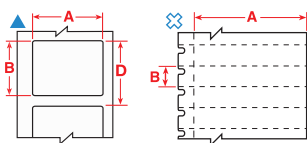


Diagram	Order Reference	Colour	Label Width A (mm)	Label Height B (mm)	Label Length B (m)	Vertical Repeat D (mm)	Labels per Roll	Printer Ribbon Series	Printer Compatibility
<b>B-428: Metallised Polyester</b>									
▲	M71-15-428	Silver	25.40	6.99	-	10.16	750	M71-R4300	BMP71
▲	M71-17-428	Silver	25.40	12.70	-	15.88	500	M71-R4300	BMP71
▲	BM71-17-428	Silver	25.40	12.70	-	15.88	5000	R4300	M611, BMP61, BMP71
▲	M71-29-428	Silver	38.10	12.70	-	15.88	500	M71-R4300	BMP71
◎	M71C-500-428	Silver	12.70	-	15.24	-	1	M71-R4300	BMP71
<b>B-430: Polyester</b>									
▲	M71-68-430	Clear	6.10	3.81	-	9.53	750	M71-R6000HF	BMP71
▲	M71-71-430	Clear	8.89	5.08	-	9.53	750	M71-R6000HF	BMP71
▲	M71-16-430	Clear	25.40	9.53	-	12.70	500	M71-R6000HF	BMP71
▲	M71-17-430	Clear	25.40	12.70	-	15.88	500	M71-R6000HF	BMP71
▲	M71-45-430	Clear	38.10	9.53	-	12.70	500	M71-R6000HF	BMP71
◎	M71C-375-430	Clear	9.53	-	15.24	-	1	M71-R6000HF	BMP71
◎	M71C-500-430	Clear	12.70	-	15.24	-	1	M71-R6000HF	BMP71
◎	M71C-1000-430	Clear	25.40	-	15.24	-	1	M71-R6000HF	BMP71
<b>B-483: Polyester</b>									
▲	M71-16-483	White	25.40	9.53	-	12.70	500	M71-R6000HF	BMP71
▲	M71-19-483	White	25.40	25.40	-	28.58	250	M71-R6000HF	BMP71
▲	M71-17-483	White	25.40	12.70	-	15.88	500	M71-R6000HF	BMP71
▲	M71-65-483	White	34.93	25.40	-	28.58	250	M71-R6000HF	BMP71
▲	M71-29-483	White	38.10	12.70	-	15.88	500	M71-R6000HF	BMP71
▲	M71-30-483	White	38.10	19.05	-	22.23	250	M71-R6000HF	BMP71
▲	M71-31-483	White	38.10	25.40	-	28.58	250	M71-R6000HF	BMP71
◎	M71C-500-483	White	12.70	-	15.24	-	1	M71-R6000HF	BMP71
◎	M71C-1000-483	White	25.40	-	15.24	-	1	M71-R6000HF	BMP71

Order references beginning with "B" indicate bulk rolls.

### Workstation labels



- A variety of durable and resistant materials to label your workstation.

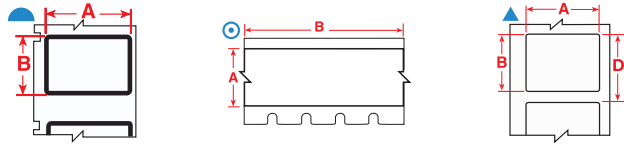
Diagram	Order Reference	Colour	Label Width A (mm)	Label Height B (mm)	Vertical Repeat D (mm)	Labels per Roll	For Data Cables Sized to Fit	Printer Ribbon Series
<b>B-412: Polypropylene Tag</b>								
⊗	M71-40-412	White	49.23	9.53	9.53	750	Desi-Strip Inserts	M71-R6200
⊗	BM71-40-412	White	49.23	9.53	9.53	5000	Desi-Strip Inserts	R6200
<b>B-422: Polyester</b>								
▲	M71-45-422	White	38.10	9.53	12.70	500	Location Identification	M71-R6000HF
<b>B-430: Polyester</b>								
▲	M71-68-430	Clear	6.10	3.81	9.53	750	Siemens Faceplates	M71-R6000HF
▲	M71-71-430	Clear	8.89	5.08	9.53	750	Siemens Faceplates	M71-R6000HF
▲	M71-16-430	Clear	25.40	9.53	12.70	500	Location Identification; 1-4 Outlet Faceplates	M71-R6000HF
▲	M71-17-430	Clear	25.40	12.70	15.88	500	Location Identification; 1-4 Outlet Faceplates	M71-R6000HF
▲	M71-45-430	Clear	38.10	9.53	12.70	500	Location Identification	M71-R6000HF



## Asset & component marking

### Rating and name plate labels

- Choose from several materials with aggressive adhesives for use in commercial/ industrial applications, including low surface energy and textured surfaces.



### For rough surfaces

Diagram	Order Reference	Colour	Label Width A (mm)	Label Height B (mm)	Label Length B (m)	Vertical Repeat D (mm)	Labels per Roll	Printer Ribbon Series	Printer Compatibility
<b>B-483: Polyester</b>									
▲	M71-61-483	White	12.70	50.80	-	53.98	100	M71-R6000HF	BMP71
▲	M71-16-483	White	25.40	9.53	-	12.70	500	M71-R6000HF	BMP71
▲	M71-19-483	White	25.40	25.40	-	28.58	250	M71-R6000HF	BMP71
▲	M71-23-483	White	25.40	101.60	-	104.78	100	M71-R6000HF	BMP71
▲	M71-17-483	White	25.40	12.70	-	15.88	500	M71-R6000HF	BMP71
▲	M71-20-483	White	25.40	50.80	-	53.98	100	M71-R6000HF	BMP71
▲	M71-65-483	White	34.93	25.40	-	28.58	250	M71-R6000HF	BMP71
▲	M71-29-483	White	38.10	12.70	-	15.88	500	M71-R6000HF	BMP71
▲	M71-30-483	White	38.10	19.05	-	22.23	250	M71-R6000HF	BMP71
▲	M71-31-483	White	38.10	25.40	-	28.58	250	M71-R6000HF	BMP71
▲	M71-38-483	White	48.26	101.60	-	104.78	100	M71-R6000HF	BMP71
▲	M71-37-483	White	76.20	48.26	-	79.38	100	M71-R6000HF	BMP71
⊙	M71C-500-483	White	12.70	-	15.24	-	1	M71-R6000HF	BMP71
⊙	M71C-1000-483	White	25.40	-	15.24	-	1	M71-R6000HF	BMP71
⊙	M71C-1900-483	White	48.26	-	15.24	-	1	M71-R6000HF	BMP71
<b>B-486: Metallised Polyester</b>									
▲	M71-17-486	Silver	25.40	12.70	-	15.88	500	M71-R4300	BMP71
▲	M71-20-486	Silver	25.40	50.80	-	53.98	100	M71-R4300	BMP71
▲	M71-29-486	Silver	38.10	12.70	-	15.88	500	M71-R4300	BMP71
▲	M71-30-486	Silver	38.10	19.05	-	22.23	250	M71-R4300	BMP71
▲	M71-37-486	Silver	76.20	48.26	-	79.38	100	M71-R4300	BMP71
<b>B-489: Polyester</b>									
▲	M71-17-489	White	25.40	12.70	-	15.88	500	M71-R6200	BMP71
▲	M71-29-489	White	38.10	12.70	-	15.88	500	M71-R6200	BMP71
▲	M71-32-489	White	38.10	38.10	-	41.28	250	M71-R6200	BMP71
▲	M71-38-489	White	48.26	101.60	-	104.78	100	M71-R6200	BMP71

### For low energy and textured surfaces

Diagram	Order Reference	Colour	Label Width A (mm)	Label Height B (mm)	Label Length B (m)	Vertical Repeat D (mm)	Labels per Roll	Printer Ribbon Series	Printer Compatibility
<b>B-422: Polyester</b>									
▲	BM71-20-422	White	25.40	50.80	-	53.98	1000	R6000HF	M611, BMP61, BMP71
▲	M71-30-422	White	38.10	19.05	-	22.23	250	M71-R6000HF	BMP71
▲	M71-45-422	White	38.10	9.53	-	12.70	500	M71-R6000HF	BMP71
▲	M71-37-422	White	76.20	48.26	-	79.38	100	M71-R6000HF	BMP71
⊙	M71C-375-422	White	9.53	-	15.24	-	1	M71-R6000HF	BMP71
⊙	M71C-475-422	White	12.07	-	15.24	-	1	M71-R6000HF	BMP71
⊙	M71C-500-422	White	12.70	-	15.24	-	1	M71-R6000HF	BMP71
⊙	M71C-625-422	White	15.88	-	15.24	-	1	M71-R6000HF	BMP71
⊙	M71C-1000-422	White	25.40	-	15.24	-	1	M71-R6000HF	BMP71
⊙	M71C-1900-422	White	48.26	-	15.24	-	1	M71-R6000HF	BMP71

Order references beginning with "B" indicate bulk rolls.

>>



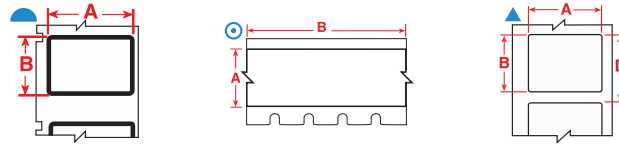
See pages 49 - 51 for a detailed material index.

# General & industrial identification

## Asset & component marking



## Rating and name plate labels (Continued)



## For low energy and textured surfaces (Continued)

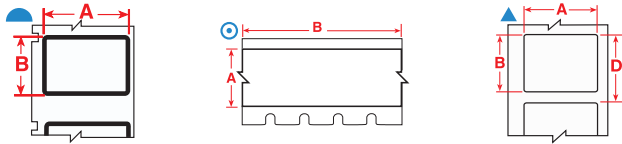
Diagram	Order Reference	Colour	Label Width A (mm)	Label Height B (mm)	Label Length B (m)	Vertical Repeat D (mm)	Labels per Roll	Printer Ribbon Series	Printer Compatibility
<b>B-499: Nylon Cloth</b>									
▲	M71-16-499	White	9.53	25.40	-	12.70	500	M71-R4300	BMP71
▲	M71-7-499	White	12.70	12.70	-	15.88	500	M71-R4300	BMP71
▲	M71-67-499-YL	Yellow	15.00	9.00	-	-	750	M71-R4300	BMP71
▲	M71-41-499-YL	Yellow	16.00	5.00	-	-	750	M71-R4300	BMP71
▲	BM71-11-499	White	19.05	12.70	-	15.88	5000	R4310	M611, BMP61, BMP71
▲	M71-11-499	White	19.05	12.70	-	15.88	500	M71-R4300	BMP71
▲	M71-84-499	White	22.86	12.70	-	15.88	500	M71-R4300	BMP71
▲	M71-18-499	White	25.40	19.05	-	22.23	250	M71-R4300	BMP71
▲	M71-19-499	White	25.40	25.40	-	28.58	250	M71-R4300	BMP71
▲	M71-21-499	White	25.40	63.50	-	66.68	100	M71-R4300	BMP71
▲	M71-29-499	White	38.10	12.70	-	15.88	500	M71-R4300	BMP71
▲	M71-30-499	White	38.10	19.05	-	22.23	250	M71-R4300	BMP71
▲	M71-31-499	White	38.10	25.40	-	28.58	250	M71-R4300	BMP71
▲	M71-28-499	White	38.10	6.35	-	9.53	750	M71-R4300	BMP71
▲	M71-78-499	White	48.26	25.40	-	28.58	250	M71-R4300	BMP71
▲	M71-81-499	White	48.26	6.35	-	9.53	750	M71-R4300	BMP71
○	M71C-500-499	White	12.70	-	9.10	-	1	M71-R4300	BMP71
○	M71C-1000-499	White	25.40	-	9.10	-	1	M71-R4300	BMP71
○	M71C-1900-499	White	48.26	-	9.10	-	1	M71-R4300	BMP71
<b>B-595: Vinyl</b>									
○	M71C-500-595-BK	Black	12.70	-	15.24	-	1	M71-R4400-WT	BMP71
○	M71C-500-595-BL	Blue	12.70	-	15.24	-	1	M71-R4400-WT	BMP71
○	M71C-500-595-CL	Clear	12.70	-	15.24	-	1	M71-R6000HF	BMP71
○	M71C-500-595-GN	Green	12.70	-	15.24	-	1	M71-R4400-WT	BMP71
○	M71C-500-595-OR	Orange	12.70	-	15.24	-	1	M71-R6000HF	BMP71
○	M71C-500-595-RD	Red	12.70	-	15.24	-	1	M71-R4400-WT	BMP71
○	M71C-500-595-WT	White	12.70	-	15.24	-	1	M71-R6000HF	BMP71
○	M71C-500-595-YL	Yellow	12.70	-	15.24	-	1	M71-R6000HF	BMP71
○	M71C-1000-595-BK	Black	25.40	-	15.24	-	1	M71-R4400-WT	BMP71
○	M71C-1000-595-BL	Blue	25.40	-	15.24	-	1	M71-R4400-WT	BMP71
○	M71C-1000-595-CL	Clear	25.40	-	15.24	-	1	M71-R6000HF	BMP71
○	M71C-1000-595-GN	Green	25.40	-	15.24	-	1	M71-R4400-WT	BMP71
○	M71C-1000-595-OR	Orange	25.40	-	15.24	-	1	M71-R6000HF	BMP71
○	M71C-1000-595-RD	Red	25.40	-	15.24	-	1	M71-R4400-WT	BMP71
○	M71C-1000-595-WT	White	25.40	-	15.24	-	1	M71-R6000HF	BMP71
○	M71C-1000-595-YL	Yellow	25.40	-	15.24	-	1	M71-R6000HF	BMP71
○	M71C-2000-595-BK	Black	50.80	-	15.24	-	1	M71-R4400-WT	BMP71
○	M71C-2000-595-BL	Blue	50.80	-	15.24	-	1	M71-R4400-WT	BMP71
○	M71C-2000-595-CL	Clear	50.80	-	15.24	-	1	M71-R6000HF	BMP71
○	M71C-2000-595-GN	Green	50.80	-	15.24	-	1	M71-R4400-WT	BMP71
○	M71C-2000-595-OR	Orange	50.80	-	15.24	-	1	M71-R6000HF	BMP71
○	M71C-2000-595-RD	Red	50.80	-	15.24	-	1	M71-R4400-WT	BMP71
○	M71C-2000-595-WT	White	50.80	-	15.24	-	1	M71-R6000HF	BMP71
○	M71C-2000-595-YL	Yellow	50.80	-	15.24	-	1	M71-R6000HF	BMP71

Order references beginning with "B" indicate bulk rolls.

**i** See pages 49 - 51 for a detailed material index.

## Asset & component marking

### Rating and name plate labels (Continued)



For smooth, high energy surfaces

Diagram	Order Reference	Colour	Label Width A (mm)	Label Height B (mm)	Label Length B (m)	Vertical Repeat D (mm)	Labels per Roll	Printer Ribbon Series	Printer Compatibility
<b>B-423: Polyester</b>									
▲	M71-1-423	White	6.35	6.35	-	9.53	750	M71-R6000HF	BMP71
▲	M71-2-423	White	6.35	50.80	-	53.98	100	M71-R6000HF	BMP71
▲	M71-3-423	White	9.53	9.53	-	12.70	500	M71-R6000HF	BMP71
▲	M71-4-423	White	10.16	10.16	-	13.34	500	M71-R6000HF	BMP71
▲	M71-5-423	White	12.70	5.08	-	8.26	750	M71-R6000HF	BMP71
▲	M71-6-423	White	12.70	6.99	-	10.16	750	M71-R6000HF	BMP71
▲	M71-7-423	White	12.70	12.70	-	15.88	500	M71-R6000HF	BMP71
▲	BM71-7-423	White	12.70	12.70	-	15.88	5000	R6000HF	M611, BMP61, BMP71
▲	M71-9-423	White	16.51	5.08	-	8.26	750	M71-R6000HF	BMP71
▲	M71-10-423	White	19.05	6.35	-	9.53	750	M71-R6000HF	BMP71
▲	M71-13-423	White	22.86	6.35	-	9.53	750	M71-R6000HF	BMP71
▲	M71-14-423	White	25.40	4.75	-	8.26	750	M71-R6000HF	BMP71
▲	M71-15-423	White	25.40	6.99	-	10.16	750	M71-R6000HF	BMP71
▲	M71-20-423	White	25.40	50.80	-	53.98	100	M71-R6000HF	BMP71
▲	M71-22-423	White	25.40	76.20	-	79.38	100	M71-R6000HF	BMP71
▲	M71-23-423	White	25.40	101.60	-	104.78	100	M71-R6000HF	BMP71
▲	BM71-17-423	White	25.40	12.70	-	15.88	5000	R6000HF	M611, BMP61, BMP71
▲	BM71-20-423	White	25.40	50.80	-	53.98	1000	R6000HF	M611, BMP61, BMP71
▲	BM71-16-423	White	25.40	9.53	-	12.70	5000	R6000HF	M611, BMP61, BMP71
▲	BM71-19-423	White	25.40	25.40	-	28.58	2500	R6000HF	M611, BMP61, BMP71
▲	M71-16-423	White	25.40	9.53	-	12.70	500	M71-R6000HF	BMP71
▲	M71-17-423	White	25.40	12.70	-	15.88	500	M71-R6000HF	BMP71
▲	M71-19-423	White	25.40	25.40	-	28.58	250	M71-R6000HF	BMP71
◐	M71-24-423-BK	White with 1.6 mm Black Border	28.70	12.70	-	15.88	500	M71-R6000HF	BMP71
▲	M71-25-423	White	31.75	6.35	-	9.53	750	M71-R6000HF	BMP71
▲	M71-26-423	White	31.75	69.85	-	73.03	100	M71-R6000HF	BMP71
▲	M71-27-423	White	38.10	3.18	-	6.35	750	M71-R6000HF	BMP71
▲	M71-28-423	White	38.10	6.35	-	9.53	750	M71-R6000HF	BMP71
▲	M71-29-423	White	38.10	12.70	-	15.88	500	M71-R6000HF	BMP71
▲	M71-32-423	White	38.10	38.10	-	41.28	250	M71-R6000HF	BMP71
▲	BM71-29-423	White	38.10	12.70	-	15.88	5000	R6000HF	M611, BMP61, BMP71
▲	M71-31-423	White	38.10	25.40	-	28.58	250	M71-R6000HF	BMP71
▲	M61-30-423	White	38.10	19.05	-	-	250	R6000	M611, BMP61, BMP71
▲	M71-38-423	White	48.26	101.60	-	104.78	100	M71-R6000HF	BMP71
▲	M61-52-423	White	48.26	15.24	-	-	250	R6000	M611, BMP61, BMP71
▲	M71-37-423	White	76.20	48.26	-	79.38	100	M71-R6000HF	BMP71
◎	M71C-500-423	White	12.70	-	15.24	-	1	M71-R6000HF	BMP71
<b>B-428: Metallised Polyester</b>									
▲	M71-15-428	Silver	25.40	6.99	-	10.16	750	M71-R4300	BMP71
▲	M71-17-428	Silver	25.40	12.70	-	15.88	500	M71-R4300	BMP71
▲	M71-20-428	Silver	25.40	50.80	-	53.98	100	M71-R4300	BMP71
▲	M71-22-428	Silver	25.40	76.20	-	79.38	100	M71-R4300	BMP71
▲	BM71-17-428	Silver	25.40	12.70	-	15.88	5000	R4300	M611, BMP61, BMP71
▲	BM71-20-428	Silver	25.40	50.80	-	53.98	1000	R4300	M611, BMP61, BMP71
▲	M71-26-428	Silver	31.75	69.85	-	73.03	100	M71-R4300	BMP71
▲	M71-29-428	Silver	38.10	12.70	-	15.88	500	M71-R4300	BMP71
▲	M71-35-428-PROP	Black on Silver	41.40	19.05	-	22.23	250	M71-R4300	BMP71
▲	M71-38-428	Silver	48.26	101.60	-	104.78	100	M71-R4300	BMP71
◎	M71C-500-428	Silver	12.70	-	15.24	-	1	M71-R4300	BMP71

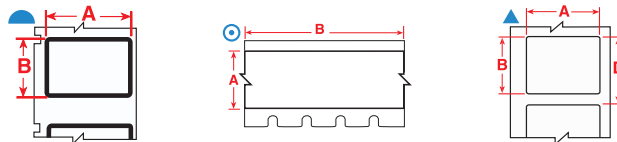
>>

# General & industrial identification

## Asset & component marking

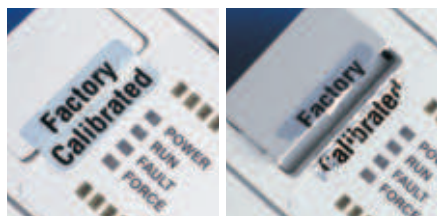


## Rating and name plate labels (Continued)



For smooth, high energy surfaces (Continued)

Diagram	Order Reference	Colour	Label Width A (mm)	Label Height B (mm)	Label Length B (m)	Vertical Repeat D (mm)	Labels per Roll	Printer Ribbon Series	Printer Compatibility
<b>B-430: Polyester</b>									
▲	M71-68-430	Clear	6.10	3.81	-	9.53	750	M71-R6000HF	BMP71
▲	M71-71-430	Clear	8.89	5.08	-	9.53	750	M71-R6000HF	BMP71
▲	M71-16-430	Clear	25.40	9.53	-	12.70	500	M71-R6000HF	BMP71
▲	M71-17-430	Clear	25.40	12.70	-	15.88	500	M71-R6000HF	BMP71
▲	M61-22-430	Clear	25.40	76.20	-	-	100	R6000	M611, BMP61, BMP71
▲	M71-45-430	Clear	38.10	9.53	-	12.70	500	M71-R6000HF	BMP71
▲	M61-30-430	Clear	38.10	19.05	-	-	250	R6000	M611, BMP61, BMP71
▲	M61-78-430	Clear	48.26	25.40	-	-	250	R6000	M611, BMP61, BMP71
▲	M61-37-430	Clear	48.26	76.20	-	-	100	R6000	M611, BMP61, BMP71
▲	M61-52-430	Clear	48.26	15.24	-	-	250	R6000	M611, BMP61, BMP71
⊙	M71C-375-430	Clear	9.53	-	15.24	-	1	M71-R6000HF	BMP71
⊙	M71C-500-430	Clear	12.70	-	15.24	-	1	M71-R6000HF	BMP71
⊙	M71C-1000-430	Clear	25.40	-	15.24	-	1	M71-R6000HF	BMP71
⊙	M71C-1900-430	Clear	48.26	-	15.24	-	1	M71-R6000HF	BMP71
<b>B-488: Polyester</b>									
▲	M71-80-488	White	19.05	22.86	-	28.58	250	M71-R4300	BMP71
▲	M71-97-488	White	22.86	22.86	-	28.58	250	M71-R4300	BMP71
▲	M71-81-488	White	48.26	6.35	-	9.53	750	M71-R4300	BMP71
<b>B-529: Polypropylene</b>									
⊙	M71C-1000-529	White	25.40	-	15.24	-	1	M71-R6000HF	BMP71
⊙	M71C-2000-529	White	50.80	-	15.24	-	1	M71-R6000HF	BMP71



## Security identification labels

- Tamper-resistant tape destructs into tiny fragments when being removed, makes any attempts to remove the label very difficult and time consuming.

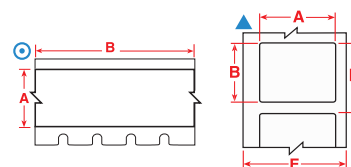


Diagram	Order Reference	Colour	Label Width A (mm)	Label Height B (mm)	Vertical Repeat D (mm)	Labels per Roll	Printer Ribbon Series	Printer Compatibility
<b>B-351: Tamper-resistant Vinyl</b>								
▲	M71-17-351	White	25.40	12.70	15.88	500	M71-R6000HF	BMP71
▲	M71-20-351	White	25.40	50.80	53.98	100	M71-R6000HF	BMP71
▲	M71-31-351	White	38.10	25.40	28.58	250	M71-R6000HF	BMP71
▲	M71-37-351	White	76.20	48.26	79.38	100	M71-R6000HF	BMP71
<b>B-362: Tamper-resistant Metallised Vinyl</b>								
▲	M71-17-362	Silver	25.40	12.70	15.88	500	M71-R6000HF	BMP71
▲	M71-20-362	Silver	25.40	50.80	53.98	100	M71-R6000HF	BMP71
▲	M71-31-362	Silver	38.10	25.40	28.58	250	M71-R6000HF	BMP71
▲	M71-37-362	Silver	76.20	48.26	79.38	100	M71-R6000HF	BMP71
<b>B-530: Tamper-resistant Vinyl</b>								
⊙	M71C-500-530	White	12.70	-	-	1	M71-R6000HF	BMP71
⊙	M71C-1000-530	White	25.40	-	-	1	M71-R6000HF	BMP71
⊙	M71C-2000-530	White	50.80	-	-	1	M71-R6000HF	BMP71

**i** See pages 49 - 51 for a detailed material index.



## Pipe and valve marking

### High performance indoor/outdoor vinyl

- Adheres to difficult low surface energy items, including: PVC piping, blow-molded equipment cases, ABS plastics, powder-coated surfaces and equipment made from recycled plastics.
- Excels at sticking to highly textured surfaces such as painted cinder block walls, finished uneven wood, textured plastics, rough-pipes and paper-jacketed pipes.
- 8 to 10\*\* year outdoor durability average in temperatures from -40°C to 82°C, can be applied as low as -18 °C

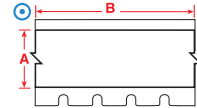
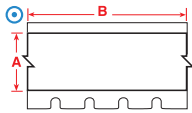


Diagram	Order Reference	Colour	Finish	Label Width A (mm)	Label Length B (m)	Labels per Roll	Printer Ribbon Series
B-595: Vinyl							
⊙	M71C-500-595-TN	Beige	Gloss	12.70	15.24 m	1	M71-R6000HF
⊙	M71C-500-595-BK	Black	Gloss	12.70	15.24 m	1	M71-R4400-WT
⊙	M71C-500-595-BL	Blue	Gloss	12.70	15.24 m	1	M71-R4400-WT
⊙	M71C-500-595-BR	Brown	Gloss	12.70	15.24 m	1	M71-R4400-WT
⊙	M71C-500-595-CL	Clear	Gloss	12.70	15.24 m	1	M71-R6000HF
⊙	M71C-500-595-GD	Gold	Gloss	12.70	15.24 m	1	M71-R6000HF
⊙	M71C-500-595-GN	Green	Gloss	12.70	15.24 m	1	M71-R4400-WT
⊙	M71C-500-595-GY	Grey	Gloss	12.70	15.24 m	1	M71-R6000HF
⊙	M71C-500-595-LB	Light Blue	Gloss	12.70	15.24 m	1	M71-R4400-WT
⊙	M71C-500-595-OC	Ochre	Gloss	12.70	15.24 m	1	M71-R6000HF
⊙	M71C-500-595-OR	Orange	Gloss	12.70	15.24 m	1	M71-R6000HF
⊙	M71C-500-595-PK	Pink	Gloss	12.70	15.24 m	1	M71-R6000HF
⊙	M71C-500-595-PL	Purple	Gloss	12.70	15.24 m	1	M71-R4400-WT
⊙	M71C-500-595-RD	Red	Gloss	12.70	15.24 m	1	M71-R4400-WT
⊙	M71C-500-595-SB	Sky Blue	Gloss	12.70	15.24 m	1	M71-R4400-WT
⊙	M71C-500-595-WT	White	Gloss	12.70	15.24 m	1	M71-R6000HF
⊙	M71C-500-595-YL	Yellow	Gloss	12.70	15.24 m	1	M71-R6000HF
⊙	M71C-1000-595-TN	Beige	Gloss	25.40	15.24 m	1	M71-R6000HF
⊙	M71C-1000-595-BK	Black	Gloss	25.40	15.24 m	1	M71-R4400-WT
⊙	M71C-1000-595-BL	Blue	Gloss	25.40	15.24 m	1	M71-R4400-WT
⊙	M71C-1000-595-BR	Brown	Gloss	25.40	15.24 m	1	M71-R4400-WT
⊙	M71C-1000-595-CL	Clear	Gloss	25.40	15.24 m	1	M71-R6000HF
⊙	M71C-1000-595-GD	Gold	Gloss	25.40	15.24 m	1	M71-R6000HF
⊙	M71C-1000-595-GN	Green	Gloss	25.40	15.24 m	1	M71-R4400-WT
⊙	M71C-1000-595-GY	Grey	Gloss	25.40	15.24 m	1	M71-R6000HF
⊙	M71C-1000-595-LB	Light Blue	Gloss	25.40	15.24 m	1	M71-R4400-WT
⊙	M71C-1000-595-OC	Ochre	Gloss	25.40	15.24 m	1	M71-R6000HF
⊙	M71C-1000-595-OR	Orange	Gloss	25.40	15.24 m	1	M71-R6000HF
⊙	M71C-1000-595-PK	Pink	Gloss	25.40	15.24 m	1	M71-R6000HF
⊙	M71C-1000-595-PL	Purple	Gloss	25.40	15.24 m	1	M71-R4400-WT
⊙	M71C-1000-595-RD	Red	Gloss	25.40	15.24 m	1	M71-R4400-WT
⊙	M71C-1000-595-SB	Sky Blue	Gloss	25.40	15.24 m	1	M71-R4400-WT
⊙	M71C-1000-595-WT	White	Gloss	25.40	15.24 m	1	M71-R6000HF
⊙	M71C-1000-595-YL	Yellow	Gloss	25.40	15.24 m	1	M71-R6000HF
⊙	M71C-2000-595-TN	Beige	Gloss	50.80	15.24 m	1	M71-R6000HF
⊙	M71C-2000-595-BK	Black	Gloss	50.80	15.24 m	1	M71-R4400-WT
⊙	M71C-2000-595-BL	Blue	Gloss	50.80	15.24 m	1	M71-R4400-WT
⊙	M71C-2000-595-BR	Brown	Gloss	50.80	15.24 m	1	M71-R4400-WT
⊙	M71C-2000-595-CL	Clear	Gloss	50.80	15.24 m	1	M71-R6000HF
⊙	M71C-2000-595-GD	Gold	Gloss	50.80	15.24 m	1	M71-R6000HF
⊙	M71C-2000-595-GN	Green	Gloss	50.80	15.24 m	1	M71-R4400-WT
⊙	M71C-2000-595-GY	Grey	Gloss	50.80	15.24 m	1	M71-R6000HF

\*\*Average expected outdoor life of product will depend on user definition of failure, climatic conditions, mounting techniques and material colour. The up to 8 to 10 year outdoor durability applies to the vinyl label stock only; ribbon durability will vary. A polyester overlamine is recommended for harsh environments - long term exposure to wind and rain.

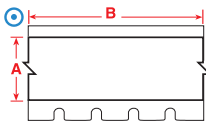




## High performance indoor/outdoor vinyl (Continued)

Diagram	Order Reference	Colour	Finish	Label Width A (mm)	Label Length B (m)	Labels per Roll	Printer Ribbon Series
⊙	M71C-2000-595-LB	Light Blue	Gloss	50.80	15.24 m	1	M71-R4400-WT
⊙	M71C-2000-595-OC	Ochre	Gloss	50.80	15.24 m	1	M71-R6000HF
⊙	M71C-2000-595-OR	Orange	Gloss	50.80	15.24 m	1	M71-R6000HF
⊙	M71C-2000-595-PK	Pink	Gloss	50.80	15.24 m	1	M71-R6000HF
⊙	M71C-2000-595-PL	Purple	Gloss	50.80	15.24 m	1	M71-R4400-WT
⊙	M71C-2000-595-RD	Red	Gloss	50.80	15.24 m	1	M71-R4400-WT
⊙	M71C-2000-595-SB	Sky Blue	Gloss	50.80	15.24 m	1	M71-R4400-WT
⊙	M71C-2000-595-WT	White	Gloss	50.80	15.24 m	1	M71-R6000HF
⊙	M71C-2000-595-YL	Yellow	Gloss	50.80	15.24 m	1	M71-R6000HF

## Food processing equipment marking



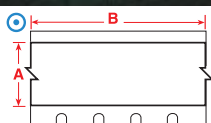
### ToughWash series labels

- Durable label construction resists harsh washdown environments and has been tested at washdown temperatures up to 80°C (175° F) and pressures up to 1500 PSI.
- B-854 is a metal detectable version, capable of being detected by commercially available metal detectors.

Diagram	Order Reference	Colour	Finish	Label Width A (mm)	Label Length B (m)	Printer Ribbon Series
B-854: Metal Detectable Polyester						
⊙	BM71C-1000-854-YL	Yellow	Matt	25.40	22.86 m	M71-R6000HF
⊙	BM71C-1000-854-WT	White	Matt	25.40	22.86 m	M71-R6000HF
⊙	BM71C-2000-854-YL	Yellow	Matt	50.80	22.86 m	M71-R6000HF
⊙	BM71C-2000-854-WT	White	Matt	50.80	22.86 m	M71-R6000HF
⊙	BM71C-2000-854-WAR	Black & Orange on White	Matt	50.80	22.86 m	M71-R6000HF
⊙	BM71C-2000-854-DAN	White on Red	Matt	50.80	22.86 m	M71-R6000HF
⊙	BM71C-2000-854-CAU	Black & Yellow on White	Matt	50.80	22.86 m	M71-R6000HF
B-855: Polyester						
⊙	BM71C-1000-855-YL	Yellow	Matt	25.40	22.86 m	M71-R6000HF
⊙	BM71C-1000-855-WT	White	Matt	25.40	22.86 m	M71-R6000HF
⊙	BM71C-2000-855-YL	Yellow	Matt	50.80	22.86 m	M71-R6000HF
⊙	BM71C-2000-855-WT	White	Matt	50.80	22.86 m	M71-R6000HF
⊙	BM71C-2000-855-WAR	Black & Orange on White	Matt	50.80	22.86 m	M71-R6000HF
⊙	BM71C-2000-855-DAN	White on Red	Matt	50.80	22.86 m	M71-R6000HF
⊙	BM71C-2000-855-CAU	Black & Yellow on White	Matt	50.80	22.86 m	M71-R6000HF

Order references beginning with "B" indicate bulk rolls.

## Exit & directional signs



### Photoluminescent polyester tapes

- Glow-in-the-dark material. Ideal for exit and directional signs, identification of fire alarms and extinguishers, low location egress pathway markings, and directional systems for escape or evacuation routes.

Diagram	Order Reference	Colour	Finish	Label Width A (mm)	Label Length B (m)	Printer Ribbon Series
B-582: Phosphorescent Polyester						
⊙	BM71C-1000-582	Photoluminescent	Gloss	25.40	22.86 m	M71-R6000HF
⊙	BM71C-2000-582	Photoluminescent	Gloss	50.80	22.86 m	M71-R6000HF

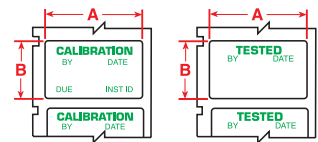
Order references beginning with "B" indicate bulk rolls.

**i** See pages 49 - 51 for a detailed material index.

## Maintenance

### Pre-printed labels

- BMP71 printable labels with pre-printed headers allow customers to print variable information next to highly visible titles.



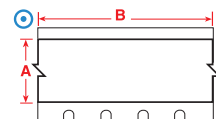
Order Reference	Legend	Colour	Finish	Label Width A (mm)	Label Height B (mm)	Repeat (mm)	Labels per Roll	Printer Ribbon Series
B-428: Metallised Polyester								
M71-30-428-CALI	CALIBRATION	Green on Silver	Matt	38.10	19.05	22.23	250	M71-R4300
B-423: Polyester								
M71-30-423-TEST	TESTED	Green on White	Gloss	38.10	19.05	22.23	250	M71-R6000HF

## Area and pathway marking

### ToughStripe area marking tape

- Create custom-printed floor labels, with easy 3-step process: print label, position on floor, apply overlaminates.
- Each kit includes 1 roll of B-483 tape and 1 roll of B-634 overlaminates.

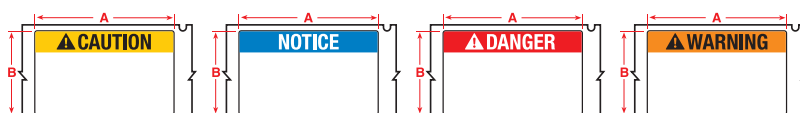
Diagram	Order Reference	Colour	Finish	Label Width A (mm)	Label Length B (m)	Printer Ribbon Series
B-483/B-634: Polyester with Polyester Overlaminates						
⊙	M71-1000-483-BK-KT	Black	Gloss	25.40	15.24 m	M71-R4400-WT
⊙	M71-1000-483-BL-KT	Blue	Gloss	25.40	15.24 m	M71-R6000HF
⊙	M71-1000-483-GN-KT	Green	Gloss	25.40	15.24 m	M71-R6000HF
⊙	M71-1000-483-OR-KT	Orange	Gloss	25.40	15.24 m	M71-R6000HF
⊙	M71-1000-483-RD-KT	Red	Gloss	25.40	15.24 m	M71-R6000HF
⊙	M71-1000-483-WT-KT	White	Gloss	25.40	15.24 m	M71-R6000HF
⊙	M71-1000-483-YL-KT	Yellow	Gloss	25.40	15.24 m	M71-R6000HF
⊙	M71-2000-483-BK-KT	Black	Gloss	50.80	15.24 m	M71-R4400-WT
⊙	M71-2000-483-BL-KT	Blue	Gloss	50.80	15.24 m	M71-R6000HF
⊙	M71-2000-483-GN-KT	Green	Gloss	50.80	15.24 m	M71-R6000HF
⊙	M71-2000-483-OR-KT	Orange	Gloss	50.80	15.24 m	M71-R6000HF
⊙	M71-2000-483-RD-KT	Red	Gloss	50.80	15.24 m	M71-R6000HF
⊙	M71-2000-483-WT-KT	White	Gloss	50.80	15.24 m	M71-R6000HF
⊙	M71-2000-483-YL-KT	Yellow	Gloss	50.80	15.24 m	M71-R6000HF



## Safety signs and labels

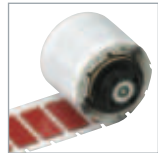
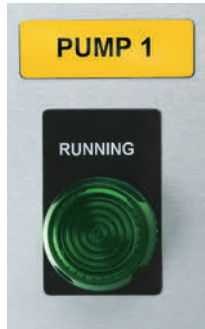
### Pre-printed labels

- BMP71 printable labels with pre-printed headers allow customers to print variable information next to highly visible titles.



Order Reference	Legend	Colour	Finish	Label Width A (mm)	Label Height B (mm)	Repeat (mm)	Labels per Roll	Printer Ribbon Series
B-483: Polyester								
M71-38-483-CAUT	CAUTION	Black on Yellow & White	Gloss	48.26	101.60	104.78	100	M71-R6000HF
M71-38-483-NOTI	NOTICE	Blue on White	Gloss	48.26	101.60	104.78	100	M71-R6000HF
M71-38-483-DANG	DANGER	Red & White	Gloss	48.26	101.60	104.78	100	M71-R6000HF
M71-38-483-WARN	WARNING	Black & Orange on White	Gloss	48.26	101.60	104.78	100	M71-R6000HF

## Safety signs and labels



Roll Mounted

Fan-folded

Bulk Roll

### Control panel and push button labels

- Brady EPREP labels are innovative labels specifically designed to replace engraved and plotted plates for identification of electrical components, electrical cabinets, push buttons, patch panels etc.

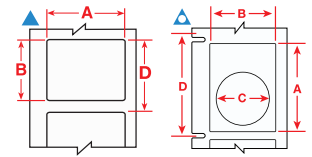
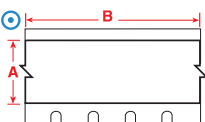


Diagram	Order Reference	Colour	Finish	Label Width A (mm)	Label Height B (mm)	Hole Diameter C (mm)	Vertical Repeat D (mm)	Labels per Roll	Layout	Printer Ribbon Series
B-7593: Polyethylene Foam Laminate Polyester										
▲	M71EP-1-7593-SL	Silver	Gloss	27.00	8.00	–	11.18	250	Roll Mounted	M71-R6000HF
▲	M71EP-2-7593-SL	Silver	Gloss	27.00	12.50	–	15.63	250	Roll Mounted	M71-R6000HF
▲	M71EP-3-7593-SL	Silver	Gloss	27.00	15.00	–	18.14	150	Roll Mounted	M71-R6000HF
▲	M71EP-4-7593-SL	Silver	Gloss	27.00	18.00	–	21.25	150	Roll Mounted	M71-R6000HF
▲	M71EP-1-7593-WT	White	Gloss	27.00	8.00	–	11.18	250	Roll Mounted	M71-R6000HF
▲	M71EP-2-7593-WT	White	Gloss	27.00	12.50	–	15.63	250	Roll Mounted	M71-R6000HF
▲	M71EP-3-7593-WT	White	Gloss	27.00	15.00	–	18.14	150	Roll Mounted	M71-R6000HF
▲	M71EP-4-7593-WT	White	Gloss	27.00	18.00	–	21.25	150	Roll Mounted	M71-R6000HF
△	M71EP-5-7593-GN	Green	Gloss	30.00	40.00	24.00	50.80	100	Fan-folded	M71-R6000HF
△	M71EP-5-7593-RD	Red	Gloss	30.00	40.00	24.00	50.80	100	Fan-folded	M71-R6000HF
△	M71EP-5-7593-SL	Silver	Gloss	30.00	40.00	24.00	50.80	100	Fan-folded	M71-R6000HF
△	M71EP-5-7593-WT	White	Gloss	30.00	40.00	24.00	50.80	100	Fan-folded	M71-R6000HF
△	M71EP-5-7593-YL	Yellow	Gloss	30.00	40.00	24.00	50.80	100	Fan-folded	M71-R6000HF
▲	M71EP-7-7593-SL	Silver	Gloss	35.00	18.00	–	21.49	100	Roll Mounted	M71-R6000HF
▲	M71EP-7-7593-WT	White	Gloss	35.00	18.00	–	21.49	100	Roll Mounted	M71-R6000HF
▲	M71EP-7-7593-YL	Yellow	Gloss	35.00	18.00	–	21.49	100	Roll Mounted	M71-R6000HF
▲	M71EP-6-7593-BK	Black	Gloss	45.00	15.00	–	40.37	100	Fan-folded	M71-R4400-WT
▲	M71EP-6-7593-RD	Red	Gloss	45.00	15.00	–	40.37	100	Fan-folded	M71-R6000HF
▲	BM71E-6-7593-SL	Silver	Gloss	45.00	15.00	–	18.26	500	Bulk Roll	M71-R6000HF
▲	BM71E-6-7593-WT	White	Gloss	45.00	15.00	–	18.26	500	Bulk Roll	M71-R6000HF
▲	M71EP-6-7593-YL	Yellow	Gloss	45.00	15.00	–	40.37	100	Fan-folded	M71-R6000HF
▲	M71EP-8-7593-SL	Silver	Gloss	48.00	19.00	–	22.46	125	Roll Mounted	M71-R6000HF
▲	M71EP-8-7593-WT	White	Gloss	48.00	19.00	–	22.46	125	Roll Mounted	M71-R6000HF



### Reflective tapes

- The reflective quality of this material makes it ideal for reading labels in low light conditions (with flashlights).

Diagram	Order Reference	Colour	Finish	Label Width A (mm)	Label Length B (m)	Printer Ribbon Series
B-584: Reflective Tape						
⊙	BM71C-1000-584-OR	Orange	Gloss	25.40	22.86 m	M71-R6000HF
⊙	BM71C-1000-584-WT	White	Gloss	25.40	22.86 m	M71-R6000HF
⊙	BM71C-1000-584-YL	Yellow	Gloss	25.40	22.86 m	M71-R6000HF
⊙	BM71C-2000-584-OR	Orange	Gloss	50.80	22.86 m	M71-R6000HF
⊙	BM71C-2000-584-WT	White	Gloss	50.80	22.86 m	M71-R6000HF
⊙	BM71C-2000-584-YL	Yellow	Gloss	50.80	22.86 m	M71-R6000HF

**i** Order references with “C” (e.g. M71C) indicate continuous. Order references beginning with “B” indicate bulk rolls.



## Lean warehouse labels

### Paper labels

- Economical choice for light duty general id.
- White finish and matt topcoat.
- Excellent contrast and smear resistance for barcode printing.

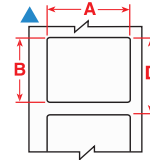


Diagram	Order Reference	Colour	Label Width A (mm)	Label Height B (mm)	Vertical Repeat D (mm)	Labels per Roll	Printer Ribbon Series	Printer Compatibility
B-424: Paper								
▲	M71-20-424	White	25.40	50.80	53.98	100	M71-R4300	BMP71
▲	BM71-20-424	White	25.40	50.80	53.98	1000	R4300	M611, BMP61, BMP71

Order references beginning with "B" indicate bulk rolls.

### Repositionable vinyl

- Best choice for indoor marking where frequent repositioning is required, such as shelves. Special adhesive allows easy removal of label to re-apply again and again.

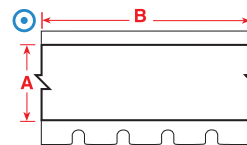


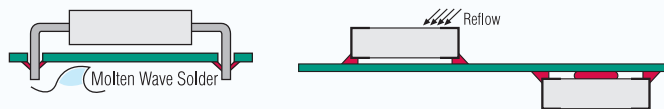
Diagram	Order Reference	Colour	Finish	Label Width A (mm)	Label Length B (m)	Printer Ribbon Series
B-581: Vinyl						
⊙	M71C-500-581-WT	White	Gloss	12.70	15.24 m	M71-R6000HF
⊙	M71C-500-581-YL	Yellow	Gloss	12.70	15.24 m	M71-R6000HF
⊙	M71C-1000-581-WT	White	Gloss	25.40	15.24 m	M71-R6000HF
⊙	M71C-1000-581-YL	Yellow	Gloss	25.40	15.24 m	M71-R6000HF
⊙	M71C-2000-581-WT	White	Gloss	50.80	15.24 m	M71-R6000HF
⊙	M71C-2000-581-YL	Yellow	Gloss	50.80	15.24 m	M71-R6000HF



See pages 49 - 51 for a detailed material index.



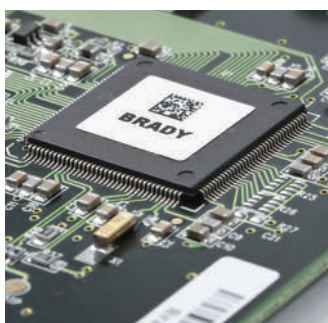
## Thermal transfer printable products circuit board process chart



	Through Hole Technology		Surface Mount Technology (SMT)	
	Top	Bottom	Top or Bottom	After Process
B-717, B-718, B-719, B-724, B-727	Yes	Yes	Yes	Yes
B-422, B-423, B-430, B-437, B-459, B-473, B-488	Yes*	No	No	Yes

\*In extreme high temperature, testing of these materials is recommended

## Circuit board marking



## Polyester labels

- Various types of high resistant polyester materials for relays, solenoids, PCB's, electronic components and more.

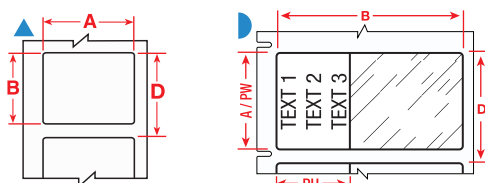


Diagram	Order Reference	Colour	Label Width A (mm)	Label Height B (mm)	Vertical Repeat D (mm)	Labels per Roll	Printer Ribbon Series	Printer Compatibility
B-423: Polyester								
▲	M71-1-423	White	6.35	6.35	9.53	750	M71-R6000HF	BMP71
▲	M71-3-423	White	9.53	9.53	12.70	500	M71-R6000HF	BMP71
▲	M71-4-423	White	10.16	10.16	13.34	500	M71-R6000HF	BMP71
▲	M71-5-423	White	12.70	5.08	8.26	750	M71-R6000HF	BMP71
▲	M71-6-423	White	12.70	6.99	10.16	750	M71-R6000HF	BMP71
▲	M71-7-423	White	12.70	12.70	15.88	500	M71-R6000HF	BMP71
▲	BM71-7-423	White	12.70	12.70	15.88	5000	R6000HF	M611, BMP61, BMP71
▲	M71-9-423	White	16.51	5.08	8.26	750	M71-R6000HF	BMP71
▲	M71-10-423	White	19.05	6.35	9.53	750	M71-R6000HF	BMP71
▲	M71-13-423	White	22.86	6.35	9.53	750	M71-R6000HF	BMP71
▲	M71-14-423	White	25.40	4.75	8.26	750	M71-R6000HF	BMP71
▲	M71-15-423	White	25.40	6.99	10.16	750	M71-R6000HF	BMP71
▲	BM71-17-423	White	25.40	12.70	15.88	5000	R6000HF	M611, BMP61, BMP71
▲	BM71-16-423	White	25.40	9.53	12.70	5000	R6000HF	M611, BMP61, BMP71
▲	BM71-19-423	White	25.40	25.40	28.58	2500	R6000HF	M611, BMP61, BMP71
▲	M71-16-423	White	25.40	9.53	12.70	500	M71-R6000HF	BMP71
▲	M71-17-423	White	25.40	12.70	15.88	500	M71-R6000HF	BMP71
▲	M71-19-423	White	25.40	25.40	28.58	250	M71-R6000HF	BMP71
▲	M71-25-423	White	31.75	6.35	9.53	750	M71-R6000HF	BMP71
▲	M71-27-423	White	38.10	3.18	6.35	750	M71-R6000HF	BMP71
▲	M71-28-423	White	38.10	6.35	9.53	750	M71-R6000HF	BMP71
▲	M71-29-423	White	38.10	12.70	15.88	500	M71-R6000HF	BMP71
▲	M71-32-423	White	38.10	38.10	41.28	250	M71-R6000HF	BMP71
▲	BM71-29-423	White	38.10	12.70	15.88	5000	R6000HF	M611, BMP61, BMP71
▲	M71-31-423	White	38.10	25.40	28.58	250	M71-R6000HF	BMP71

Order references beginning with "B" indicate bulk rolls.

>>

Polyester labels (continued)

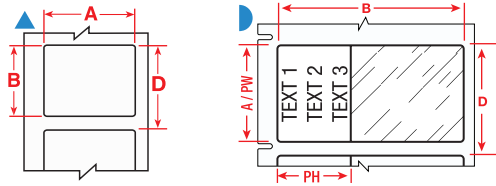


Diagram	Order Reference	Colour	Label Width A (mm)	Label Height B (mm)	Vertical Repeat D (mm)	Labels per Roll	Printer Ribbon Series	Printer Compatibility
<b>B-459: Polyester</b>								
▲	M71-20-459	White	25.40	50.80	53.98	100	M71-R6000HF	BMP71
▲	M71-29-459	White	38.10	12.70	15.88	500	M71-R6000HF	BMP71
▲	M71-30-459	White	38.10	19.05	22.23	250	M71-R6000HF	BMP71
<b>B-473: Static Dissipative Polyester</b>								
▲	M71-6-473	White	12.70	6.99	10.16	750	M71-R6000HF	BMP71
▲	M71-9-473	White	16.51	5.08	8.26	750	M71-R6000HF	BMP71
▲	M71-10-473	White	19.05	6.35	9.53	750	M71-R6000HF	BMP71
▲	M71-16-473	White	25.40	9.53	12.70	500	M71-R6000HF	BMP71
▲	M71-17-473	White	25.40	12.70	15.88	500	M71-R6000HF	BMP71
▶	M71-28-473	White	38.10	6.35	9.53	750	M71-R6000HF	BMP71

Polyimide labels

- Various types of high resistant polyimide materials for relays, solenoids, PCB's and electronic components.

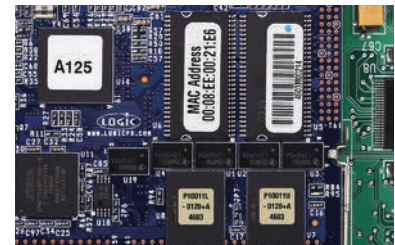
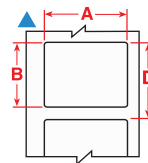


Diagram	Order Reference	Colour	Label Width A (mm)	Label Height B (mm)	Vertical Repeat D (mm)	Labels per Roll	Printer Ribbon Series	Printer Compatibility
<b>B-717: Polyimide</b>								
▲	M71-2-717	White	6.35	50.80	53.98	100	M71-R6000HF	BMP71
▲	M71-14-717	White	25.40	4.75	8.26	750	M71-R6000HF	BMP71
<b>B-718: Polyimide</b>								
▲	M71-4-718	White	10.16	10.16	13.34	500	M71-R6000HF	BMP71
▲	M71-9-718	White	16.51	5.08	8.26	750	M71-R6000HF	BMP71
▲	M71-25-718	White	31.75	6.35	9.53	750	M71-R6000HF	BMP71
<b>B-724: Polyimide</b>								
▲	M71-9-724	Amber	16.51	5.08	8.26	750	M71-R4300	BMP71
▲	M71-13-724	Amber	22.86	6.35	9.53	750	M71-R4300	BMP71
▲	M71-16-724	Amber	25.40	9.53	12.70	500	M71-R4300	BMP71
▲	M71-17-724	Amber	25.40	12.70	15.88	500	M71-R4300	BMP71
▲	M71-28-724	Amber	38.10	6.35	9.53	750	M71-R4300	BMP71
<b>B-727: Polyimide</b>								
▲	M71-10-727	White	19.05	6.35	9.53	750	M71-R6000HF	BMP71
▲	M71-16-727	White	25.40	9.53	12.70	500	M71-R6000HF	BMP71

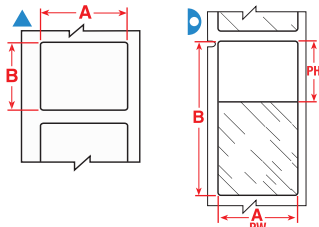
**i** See pages 49 - 51 for a detailed material index.

## Specimen tracking identification



### Straw & rod labelling

- Brady offers a range of labels designed to fit the small surface area of straws and rods and will withstand long-term storage.



- F** Freezer environment
- N** Liquid nitrogen environment
- A** Autoclave environment
- H** Hot water bath (100°C)
- S** Self-laminating label
- L** Low-profile (extremely thin) label
- R** Removable

The background colours in the Order Reference column represent the material colour.

Labels are shown per vial / tube size and in order of label width.

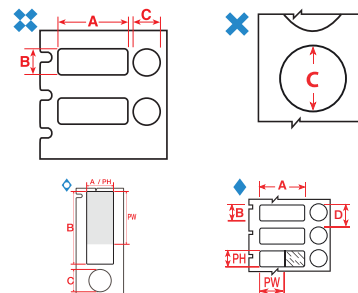
Diagram	Material	Special Properties	Label Width A (mm)	Label Height B (mm)	Printable Area Width PW (mm)	Printable Area Height PH (mm)	Order Reference	Printer Compatibility	Printer Ribbon Series	Labels per Roll
<b>0.25 ml</b>										
▶	B-427	F N S	25.40	25.40	25.40	9.53	BM71-19-427	M611, BMP61, BMP71	R4300	2500
▶	B-461	F N A H S L	25.40	25.40	25.40	9.53	M71-19-461	BMP71	M71-R4300	250
▶	B-427	F N S	25.40	25.40	25.40	9.53	M71-19-427	BMP71	M71-R4300	250
▶	B-427	F N S	25.40	25.40	25.40	9.53	M71-19-427-YL	BMP71	M71-R4300	250
<b>0.25 ml Straw</b>										
▲	B-492	F N H L	25.40	25.40	-	-	M71-19-492	BMP71	M71-R6400	250
<b>0.50 ml</b>										
▶	B-427	F N S	25.40	63.50	25.40	19.05	BM71-21-427	M611, BMP61, BMP71	R4300	1000
▶	B-427	F N S	25.40	63.50	25.40	19.05	M71-21-427	BMP71	M71-R4300	100
▶	B-427	F N S	25.40	63.50	25.40	19.05	M71-21-427-YL	BMP71	M71-R4300	100

Order references beginning with "B" indicate bulk rolls.



### Vial tops

- Save time by using the Vial and Vial top combination labels - print your information in one go.



The background colours in the Order Reference column represent the material colour.

Labels are shown per vial / tube size and in order of label width.

Diagram	Material	Special Properties	Label Width A (mm)	Label Height B (mm)	Diameter C (mm)	Printable Area Width PW (mm)	Printable Area Height PH (mm)	Order Reference	Printer Compatibility	Printer Ribbon Series	Labels per Roll
<b>0.5 - 0.7 ml</b>											
⊞	B-499	F A	25.40	9.53	9.53	-	-	M71-98-499	BMP71	M71-R4300	500
<b>0.6 - 1.5 ml</b>											
⊞	B-499	F A	-	-	9.53	-	-	M71-82-499	BMP71	M71-R4300	500
<b>1.0 - 2.0 ml</b>											
⊞	B-499	F A	-	-	12.70	-	-	M71-83-499	BMP71	M71-R4300	500
◇	B-461	F A H S L	15.24	41.28	12.70	15.24	30.00	M71-116-461	BMP71	M71-R6200	150
⊞	B-492	F H S L	25.40	12.70	9.53	-	-	M71-118-492	BMP71	M71-R6400	500
⊞	B-461	F A H S L	40.00	15.00	9.53	30.00	15.00	M71-101-461	BMP71	M71-R6200	250
<b>1.0 - 8.0 ml</b>											
⊞	B-499	F A	22.86	12.70	12.70	-	-	M71-126-499	BMP71	M71-R4300	500

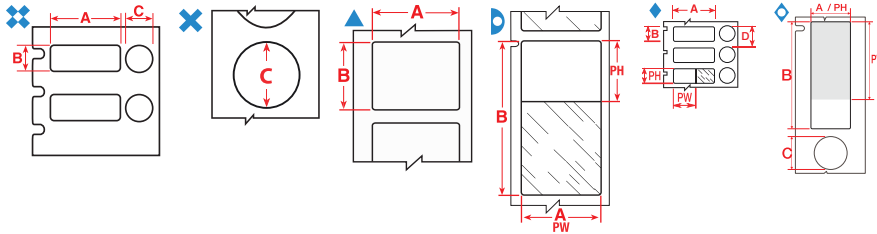
**i** See pages 49 - 51 for a detailed material index.



## Specimen tracking identification

### Vial / tube labels

- Brady's vial and test tube labels are designed to withstand extreme laboratory solvents like Xylene, Ethanol, Alcohol and DMSO, ensuring that the specimen identification is always legible - and will not smear, fade or fall off.



The background colours in the Order Reference column represent the material colour.

Labels are shown per vial / tube size and in order of label width.

Diagram	Material	Special Properties	Label Width A (mm)	Label Height B (mm)	Label Length B (mm)	Label Diameter C (mm)	Printable Area Width PW (mm)	Printable Area Height PH (mm)	Order Reference	Printer Compatibility	Printer Ribbon Series	Labels per Roll
<b>0.5 - 0.7 ml</b>												
▲	B-498	F R	9.53	25.40	-	-	-	-	M71-16-498	BMP71	M71-R6200	500
▷	B-461	F N A H S L	9.53	45.72	-	-	9.53	19.05	M71-73-461	BMP71	M71-R6200	250
▲	B-498	F R	19.05	12.70	-	-	-	-	BM71-11-498	M611, BMP61, BMP71	R6200	5000
▲	B-498	F R	19.05	12.70	-	-	-	-	M71-11-498	BMP71	M71-R6200	500
▲	B-492	F N H L	25.40	9.53	-	-	-	-	M71-16-492	BMP71	M71-R6400	500
⊗	B-499	F A	25.40	9.53	-	9.53	-	-	M71-98-499	BMP71	M71-R4300	500
<b>0.6 - 1.5 ml</b>												
⊗	B-499	F A	-	-	-	9.53	-	-	M71-82-499	BMP71	M71-R4300	500
<b>1.0 - 2.0 ml</b>												
⊗	B-499	F A	-	-	-	12.70	-	-	M71-83-499	BMP71	M71-R4300	500
▷	B-461	F N A H S L	15.24	38.10	-	-	15.24	33.00	M71-100-461	BMP71	M71-R6200	500
◇	B-461	F A H S L	15.24	41.28	-	12.70	15.24	30.00	M71-116-461	BMP71	M71-R6200	150
⊗	B-492	F H L	25.40	12.70	-	9.53	-	-	M71-118-492	BMP71	M71-R6400	500
▷	B-461	F N A H S L	25.40	44.45	-	-	25.40	25.40	M71-106-461	BMP71	M71-R6200	250
◇	B-461	F A H S L	40.00	15.00	-	9.53	30.00	15.00	M71-101-461	BMP71	M71-R6200	250
<b>1.0 - 8.0 ml</b>												
▷	B-461	F N A H S L	15.24	41.28	-	-	15.24	25.40	M71-76-461	BMP71	M71-R6200	500
▷	B-461	F N A H S L	15.24	66.68	-	-	15.24	25.40	M71-86-461	BMP71	M71-R6200	100
⊗	B-499	F A	22.86	12.70	-	12.70	-	-	M71-126-499	BMP71	M71-R4300	500
▷	B-461	F N A H S L	25.40	66.68	-	-	25.40	25.40	M71-115-461	BMP71	M71-R6200	100
▲	B-490	F N H L	41.28	15.24	-	-	-	-	M71-76-490	BMP71	M71-R4300	500
▲	B-492	F N H L	48.26	25.40	-	-	-	-	M71-78-492	BMP71	M71-R6400	250
<b>2.0 - 4.0 ml</b>												
▷	B-461	F N A H S L	15.24	48.26	-	-	15.24	40.00	M71-119-461	BMP71	M71-R6200	500
<b>12.0 - 24.0 ml</b>												
▲	B-498	F R	38.10	12.70	-	-	-	-	BM71-29-498	M611, BMP61, BMP71	R6200	5000
▲	B-498	F R	38.10	12.70	-	-	-	-	M71-29-498	BMP71	M71-R6200	500
<b>50.0 ml</b>												
▷	B-427	F N S	19.05	38.10	-	-	19.05	12.70	BM71-30-427	M611, BMP61, BMP71	R4300	2500
▲	B-498	F R	25.40	12.70	-	-	-	-	M71-17-498	BMP71	M71-R6200	500
▲	B-427	F N S	38.10	19.05	-	-	38.10	19.05	M71-30-427-AW	BMP71	M71-R4300	250
▲	B-498	F R	38.10	25.40	-	-	-	-	M71-31-498	BMP71	M71-R6200	250

Order references beginning with "B" indicate bulk rolls.

\*AW = All White / no transparent area.

- F** Freezer environment
- N** Liquid nitrogen environment
- A** Autoclave environment
- H** Hot water bath (100°C)
- S** Self-laminating label
- L** Low-profile (extremely thin) label
- R** Removable

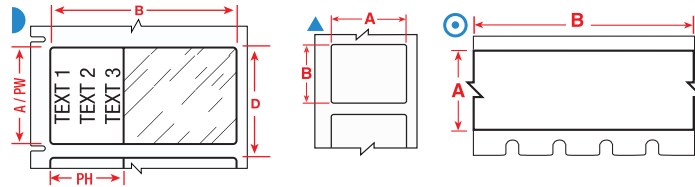
## Specimen tracking identification



### Conical & large tube labelling

- Brady offers several sample identification labels which are perfect to identify conicals. They are easy to handle, have great flexibility and easily wrap around curved sample containers. Your sample identification label will remain attached and legible, even when the sample is stored in a freezer, in liquid nitrogen or heated in an autoclave.

- F** Freezer environment
- N** Liquid nitrogen environment
- A** Autoclave environment
- H** Hot water bath (100°C)
- S** Self-laminating label
- L** Low-profile (extremely thin) label
- R** Removable



The background colours in the Order Reference column represent the material colour.

Labels are shown per vial / tube size and in order of label width.

Diagram	Material	Special Properties	Label Width A (mm)	Label Height B (mm)	Label Length B (m)	Label Diameter C (mm)	Printable Area PW (mm)	Printable Area PH (mm)	Order Reference	Printer Compatibility	Printer Ribbon Series	Labels per Roll
<b>1.5 ml</b>												
○	B-430	F A H	12.70	-	15.24	-	-	-	M71C-500-430	BMP71	M71-R6000HF	1
<b>1.0 - 8.0 ml</b>												
▲	B-490	F N H L	41.28	15.24	-	-	-	-	M71-76-490	BMP71	M71-R4300	500
▲	B-499	F N A	48.26	25.40	-	-	-	-	M71-78-499	BMP71	M71-R4300	250
<b>12.0 - 24.0 ml</b>												
▲	B-498	F	38.10	12.70	-	-	-	-	BM71-29-498	M611, BMP61, BMP71	R6200	5000
▲	B-498	F	38.10	12.70	-	-	-	-	M71-29-498	BMP71	M71-R6200	500
▲	B-499	F N A	38.10	12.70	-	-	-	-	M71-29-499	BMP71	M71-R4300	500
<b>50.0 ml</b>												
▲	B-430	F A H	25.40	12.70	-	-	-	-	M71-17-430	BMP71	M71-R6000HF	500
▲	B-423	F A H	12.70	12.70	-	-	-	-	BM71-7-423	M611, BMP61, BMP71	R6000HF	5000
▲	B-423	F A H	12.70	12.70	-	-	-	-	M71-7-423	BMP71	M71-R6000HF	500
▶	B-427	F N S	19.05	38.10	-	-	19.05	12.70	BM71-30-427	M611, BMP61, BMP71	R4300	2500
▲	B-423	F A H	25.40	4.75	-	-	-	-	M71-14-423	BMP71	M71-R6000HF	750
▲	B-423	F A H	25.40	6.99	-	-	-	-	M71-15-423	BMP71	M71-R6000HF	750
▲	B-423	F A H	25.40	12.70	-	-	-	-	M71-17-423	BMP71	M71-R6000HF	500
▲	B-492	F N H L	25.40	12.70	-	-	-	-	M71-17-492	BMP71	M71-R6400	500
▲	B-498	F	25.40	12.70	-	-	-	-	M71-17-498	BMP71	M71-R6200	500
▶	B-461	F N A H S L	25.40	38.10	-	-	25.40	12.70	M71-31-461	BMP71	M71-R6200	250
▲	B-423	F A H	25.40	50.80	-	-	-	-	BM71-20-423	M611, BMP61, BMP71	R6000HF	1000
▲	B-423	F A H	25.40	50.80	-	-	-	-	M71-20-423	BMP71	M71-R6000HF	100
▲	B-423	F A H	25.40	76.20	-	-	-	-	M71-22-423	BMP71	M71-R6000HF	100
▲	B-499	F N A	38.10	19.05	-	-	-	-	M71-30-499	BMP71	M71-R4300	250
▲	B-427	F N S	38.10	19.05	-	-	38.10	19.05	M71-30-427-AW	BMP71	M71-R4300	250
▲	B-423	F A H	38.10	25.40	-	-	-	-	M71-31-423	BMP71	M71-R6000HF	250
▲	B-498	F	38.10	25.40	-	-	-	-	M71-31-498	BMP71	M71-R6200	250
▲	B-499	F N A	38.10	25.40	-	-	-	-	M71-31-499	BMP71	M71-R4300	250

Order references beginning with "B" indicate bulk rolls.  
 \*AW = All White / no transparent area.

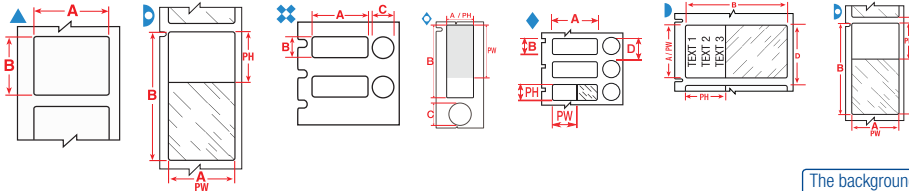
**i** See pages 49 - 51 for a detailed material index.

## Specimen process marking

- F** Freezer environment
- N** Liquid nitrogen environment
- A** Autoclave environment
- H** Hot water bath (100°C)
- S** Self-laminating label
- L** Low-profile (extremely thin) label
- R** Removable

## Centrifuge / microcentrifuge labels

- Brady offers a wide range of Centrifuge, Eppendorf and PCR Labels.
- When applying a self-laminating label, we recommend you avoid touching the adhesive side of the label when wrapping it around a vial or tube, to ensure maximum adhesion.



Labels are shown per vial / tube size and in order of label width.

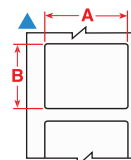
The background colours in the Order Reference column represent the material colour.

Diagram	Material	Special Properties	Label Width A (mm)	Label Height B (mm)	Label Length B (m)	Diameter C (mm)	Printable Area Width PW (mm)	Printable Area Height PH (mm)	Order Reference	Printer Compatibility	Printer Ribbon Series	Labels per Roll
<b>0.5 - 0.7 ml</b>												
▲	B-498	F	R	9.53	25.40	-	-	-	M71-16-498	BMP71	M71-R6200	500
▲	B-499	F N A		9.53	25.40	-	-	-	M71-16-499	BMP71	M71-R4300	500
▷	B-461	F N A H S L		9.53	45.72	-	9.53	19.05	M71-73-461	BMP71	M71-R6200	250
▲	B-498	F	R	19.05	12.70	-	-	-	BM71-11-498	M611, BMP61, BMP71	R6200	5000
▲	B-498	F	R	19.05	12.70	-	-	-	M71-11-498	BMP71	M71-R6200	500
▲	B-499	F N A		19.05	12.70	-	-	-	M71-11-499	BMP71	M71-R4300	500
✦	B-499	F A		25.40	9.53	-	9.53	-	M71-98-499	BMP71	M71-R4300	500
<b>0.6 ml</b>												
▲	B-499	F N A		22.86	12.70	-	-	-	M71-84-499	BMP71	M71-R4300	500
<b>1.0 - 2.0 ml</b>												
▷	B-461	F N A H S L		15.24	38.10	-	15.24	33.00	M71-100-461	BMP71	M71-R6200	500
◇	B-461	F A H S L		15.24	41.28	-	12.70	15.24	M71-116-461	BMP71	M71-R6200	150
▷	B-461	F N A H S L		25.40	44.45	-	25.40	25.40	M71-106-461	BMP71	M71-R6200	250
◆	B-461	F A H S L		40.00	15.00	-	9.53	30.00	M71-101-461	BMP71	M71-R6200	250
<b>1.0 - 8.0 ml</b>												
▷	B-461	F N A H S L		15.24	41.28	-	15.24	25.40	M71-76-461	BMP71	M71-R6200	500
▷	B-461	F N A H S L		15.24	66.68	-	15.24	25.40	M71-86-461	BMP71	M71-R6200	100
▷	B-461	F N A H S L		25.40	66.68	-	25.40	25.40	BM71-75-461	M611, BMP61, BMP71	R6200	1000
▷	B-461	F N A H S L		25.40	66.68	-	25.40	25.40	M71-115-461	BMP71	M71-R6200	100
▲	B-490	F N H L		41.28	15.24	-	-	-	M71-76-490	BMP71	M71-R4300	500
<b>2.0 - 4.0 ml</b>												
▷	B-461	F N A H S L		15.24	48.26	-	15.24	40.00	M71-119-461	BMP71	M71-R6200	500
<b>50.0 ml</b>												
▷	B-427	F N S		19.05	38.10	-	19.05	12.70	BM71-30-427	M611, BMP61, BMP71	R4300	2500
▷	B-461	F N A H S L		25.40	38.10	-	25.40	12.70	M71-31-461	BMP71	M71-R6200	250
▲	B-427	F N S		38.10	19.05	-	38.10	19.05	M71-30-427-AW	BMP71	M71-R4300	250

Order references beginning with "B" indicate bulk rolls. \*AW = All White / no transparent area.

## Slide labels

- Brady offers labels specifically designed to identify slides and to resist exposure to harsh chemicals during the slide staining process. They perform well in the hematoxylin and eosin slide staining process and offer superior chemical resistance also useful in other laboratory contexts.



Labels are shown in order of label width.

The background colours in the Order Reference column represent the material colour.



Diagram	Material	Special Properties	Label Width A (mm)	Label Height B (mm)	Order Reference	Printer Compatibility	Printer Ribbon Series	Labels per Roll
▲	B-488	F A	19.05	22.86	M71-80-488	BMP71	M71-R4300	250
▲	B-488	F A	22.86	22.86	M71-97-488	BMP71	M71-R4300	250
▲	B-481	F H	22.86	22.86	M71-97-481	BMP71	M71-R6400	250

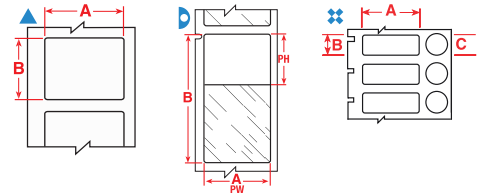
## Specimen storage identification

### Cryo tubes & vials



- Brady offers a range of labels designed specifically to identify laboratory samples for cryo storage. These labels can be applied to room temperature or to already frozen samples, albeit with a small overlap. The label will remain legible and will stick to the sample container during processing, even when exposed to extreme heat or chemicals like DMSO, Xylene and Ethanol, ensuring secure sample identification in the most challenging laboratory conditions.

- F** Freezer environment
- N** Liquid nitrogen environment
- A** Autoclave environment
- H** Hot water bath (100°C)
- S** Self-laminating label
- L** Low-profile (extremely thin) label
- R** Removable



The background colours in the Order Reference column represent the material colour.

Labels are shown per vial / tube size and in order of label width.

Diagram	Material	Special Properties	Label Width A (mm)	Label Height B (mm)	Label Length B (m)	Diameter C (mm)	Printable Area Width PW (mm)	Printable Area Height PH (mm)	Order Reference	Printer Compatibility	Printer Ribbon Series	Labels per Roll
<b>0.3 ml Straw</b>												
▲	B-492	F N H L	25.40	25.40	-	-	-	-	M71-19-492	BMP71	M71-R6400	250
<b>0.5 - 0.7 ml</b>												
▲	B-499	F N A	19.05	12.70	-	-	-	-	M71-11-499	BMP71	M71-R4300	500
▲	B-492	F N H L	25.40	9.53	-	-	-	-	M71-16-492	BMP71	M71-R6400	500
⚡	B-499	F A	25.40	9.53	-	9.53	-	-	M71-98-499	BMP71	M71-R4300	500
<b>0.6 ml</b>												
▲	B-499	F N A	22.86	12.70	-	-	-	-	M71-84-499	BMP71	M71-R4300	500
<b>1.0 - 2.0 ml</b>												
⚡	B-492	F H L	25.40	12.70	-	9.53	-	-	M71-118-492	BMP71	M71-R6400	500
<b>1.0 - 8.0 ml</b>												
▶	B-461	F N A H S L	25.40	66.68	-	-	25.40	25.40	BM71-75-461	M611, BMP61, BMP71	R6200	1000
▲	B-490	F N H L	41.28	15.24	-	-	-	-	M71-76-490	BMP71	M71-R4300	500
▲	B-492	F N H L	48.26	25.40	-	-	-	-	M71-78-492	BMP71	M71-R6400	250
<b>12.0 - 24.0 ml</b>												
▲	B-498	F	38.10	12.70	-	-	-	-	BM71-29-498	M611, BMP61, BMP71	R6200	5000
▲	B-498	F	38.10	12.70	-	-	-	-	M71-29-498	BMP71	M71-R6200	500
▲	B-499	F N A	38.10	12.70	-	-	-	-	M71-29-499	BMP71	M71-R4300	500
<b>50.0 ml</b>												
▲	B-492	F N H L	25.40	12.70	-	-	-	-	M71-17-492	BMP71	M71-R6400	500

Order references beginning with "B" indicate bulk rolls.



### Tissue cassette labels

- Tissue cassettes are often re-identified when labs collect samples from various biorepositories. Typically, each laboratory has its own unique way of identifying samples, which creates a need to re-identify samples in a common way.
- Brady B-498 post-process labels offer customers the optimal way to organise these specimens and conduct further studies. These labels can be applied directly onto the cassettes, on pure paraffin wax and on top of another label or identifier.

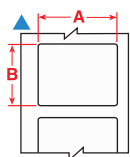


Diagram	Material	Special Properties	Label Width A (mm)	Label Height B (mm)	Order Reference	Printer Compatibility	Printer Ribbon Series	Labels per Roll
▲	B-498		12.70	12.70	M71-7-498	BMP71	M71-R6200	500
▲	B-498	F	19.05	6.35	M71-10-498	BMP71	M71-R6200	750
▲	B-498	F	19.05	12.70	BM71-11-498	M611, BMP61, BMP71	R6200	5000
▲	B-498	F	19.05	12.70	M71-11-498	BMP71	M71-R6200	500
▲	B-498	F	25.40	12.70	M71-17-498	BMP71	M71-R6200	500
▲	B-498	F	25.40	19.05	BM71-18-498	M611, BMP61, BMP71	R6200	2500
▲	B-498	F	25.40	19.05	M71-18-498	BMP71	M71-R6200	250

Order references beginning with "B" indicate bulk rolls.

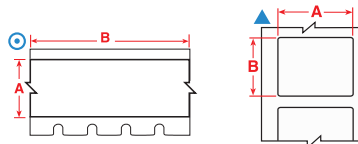
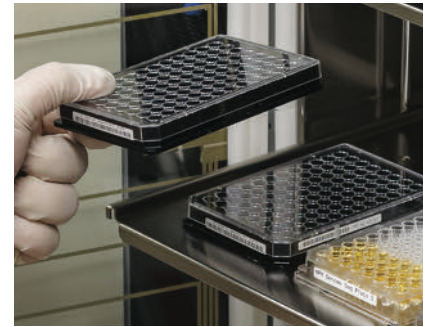


## Specimen storage identification

- F** Freezer environment
- N** Liquid nitrogen environment
- A** Autoclave environment
- H** Hot water bath (100°C)
- S** Self-laminating label
- L** Low-profile (extremely thin) label
- R** Removable

## Well plate labels

- When total tracking of all sample collections is required then Brady has a solution for Well plate identification. Our well plate labels guarantee crystal clear text and barcoding for most lab environments.



Labels are shown in order of label width.

The background colours in the Order Reference column represent the material colour.

Diagram	Material	Special Properties	Label Width A (mm)	Label Height B (mm)	Label Length B (m)	Order Reference	Printer Compatibility	Printer Ribbon Series	Labels per Roll
⊙	B-498		6.10	-	9.14	M71C-240-498	BMP71	M71-R6200	1
⊙	B-498		6.10	-	83.80	BM71C-240-498	M611, BMP61, BMP71	R6200	1
▲	B-423	F A H	6.35	50.80	-	M71-2-423	BMP71	M71-R6000HF	100
⊙	B-498		8.08	-	9.14	M71C-318-498	BMP71	M71-R6200	1
⊙	B-498		8.08	-	83.80	BM71C-318-498	M611, BMP61, BMP71	R6200	1
⊙	B-498		9.53	-	9.14	M71C-375-498	BMP71	M71-R6200	1
⊙	B-498		9.53	-	83.80	BM71C-375-498	M611, BMP61, BMP71	R6200	1
⊙	B-498	F R	12.70	-	9.10	M71C-500-498	BMP71	M71-R6200	1
⊙	B-595	F	12.70	-	15.24	M71C-500-595-BK	BMP71	M71-R4400-WT	1
⊙	B-595	F	12.70	-	15.24	M71C-500-595-BL	BMP71	M71-R4400-WT	1
⊙	B-595		12.70	-	15.24	M71C-500-595-BR	BMP71	M71-R4400-WT	1
⊙	B-595	F	12.70	-	15.24	M71C-500-595-CL	BMP71	M71-R6000HF	1
⊙	B-595		12.70	-	15.24	M71C-500-595-GD	BMP71	M71-R6000HF	1
⊙	B-595	F	12.70	-	15.24	M71C-500-595-GN	BMP71	M71-R4400-WT	1
⊙	B-595		12.70	-	15.24	M71C-500-595-GY	BMP71	M71-R6000HF	1
⊙	B-595		12.70	-	15.24	M71C-500-595-LB	BMP71	M71-R4400-WT	1
⊙	B-595		12.70	-	15.24	M71C-500-595-OC	BMP71	M71-R6000HF	1
⊙	B-595	F	12.70	-	15.24	M71C-500-595-OR	BMP71	M71-R6000HF	1
⊙	B-595		12.70	-	15.24	M71C-500-595-PK	BMP71	M71-R6000HF	1
⊙	B-595		12.70	-	15.24	M71C-500-595-PL	BMP71	M71-R4400-WT	1
⊙	B-595	F	12.70	-	15.24	M71C-500-595-RD	BMP71	M71-R4400-WT	1
⊙	B-595		12.70	-	15.24	M71C-500-595-SB	BMP71	M71-R4400-WT	1
⊙	B-595		12.70	-	15.24	M71C-500-595-TN	BMP71	M71-R6000HF	1
⊙	B-595	F	12.70	-	15.24	M71C-500-595-WT	BMP71	M71-R6000HF	1
⊙	B-595	F	12.70	-	15.24	M71C-500-595-YL	BMP71	M71-R6000HF	1
⊙	B-430	F A H	12.70	-	15.24	M71C-500-430	BMP71	M71-R6000HF	1
▲	B-423	F A H	12.70	12.70	-	BM71-7-423	M611, BMP61, BMP71	R6000HF	5000
▲	B-499		12.70	12.70	-	M71-7-499	BMP71	M71-R4300	500
▲	B-498		12.70	12.70	-	M71-7-498	BMP71	M71-R6200	500
▲	B-423	F A H	12.70	12.70	-	M71-7-423	BMP71	M71-R6000HF	500
▲	B-499		15.00	9.00	-	M71-67-499-YL	BMP71	M71-R4300	750
▲	B-499		16.00	5.00	-	M71-41-499-YL	BMP71	M71-R4300	750
▲	B-498	F R	19.05	6.35	-	M71-10-498	BMP71	M71-R6200	750
▲	B-499	F N A	19.05	12.70	-	BM71-11-499	M611, BMP61, BMP71	R4310	5000
⊙	B-499	F N A	25.40	-	9.10	M71C-1000-499	BMP71	M71-R4300	1
⊙	B-498		25.40	-	9.10	M71C-1000-498	BMP71	M71-R6200	1
⊙	B-595	F	25.40	-	15.24	M71C-1000-595-BK	BMP71	M71-R4400-WT	1
⊙	B-595	F	25.40	-	15.24	M71C-1000-595-BL	BMP71	M71-R4400-WT	1

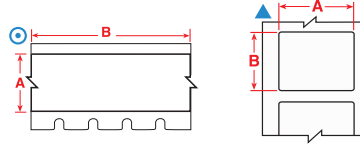
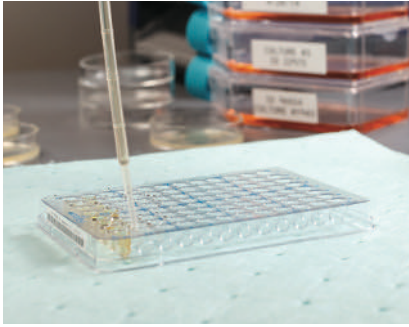
>>



See pages 49 - 51 for a detailed material index.

## Specimen storage identification

### Well plate labels (Continued)



- F** Freezer environment
- N** Liquid nitrogen environment
- A** Autoclave environment
- H** Hot water bath (100°C)
- S** Self-laminating label
- L** Low-profile (extremely thin) label
- R** Removable

Labels are shown in order of label width.

The background colours in the Order Reference column represent the material colour.

Diagram	Material	Special Properties	Label Width A (mm)	Label Height B (mm)	Label Length B (m)	Order Reference	Printer Compatibility	Printer Ribbon Series	Labels per Roll
⊙	B-595		25.40	-	15.24	M71C-1000-595-BR	BMP71	M71-R4400-WT	1
⊙	B-595	F	25.40	-	15.24	M71C-1000-595-CL	BMP71	M71-R6000HF	1
⊙	B-595		25.40	-	15.24	M71C-1000-595-GD	BMP71	M71-R6000HF	1
⊙	B-595	F	25.40	-	15.24	M71C-1000-595-GN	BMP71	M71-R4400-WT	1
⊙	B-595		25.40	-	15.24	M71C-1000-595-GY	BMP71	M71-R6000HF	1
⊙	B-595		25.40	-	15.24	M71C-1000-595-LB	BMP71	M71-R4400-WT	1
⊙	B-595		25.40	-	15.24	M71C-1000-595-OC	BMP71	M71-R6000HF	1
⊙	B-595	F	25.40	-	15.24	M71C-1000-595-OR	BMP71	M71-R6000HF	1
⊙	B-595		25.40	-	15.24	M71C-1000-595-PK	BMP71	M71-R6000HF	1
⊙	B-595		25.40	-	15.24	M71C-1000-595-PL	BMP71	M71-R4400-WT	1
⊙	B-595	F	25.40	-	15.24	M71C-1000-595-RD	BMP71	M71-R4400-WT	1
⊙	B-595		25.40	-	15.24	M71C-1000-595-SB	BMP71	M71-R4400-WT	1
⊙	B-595		25.40	-	15.24	M71C-1000-595-TN	BMP71	M71-R6000HF	1
⊙	B-595	F	25.40	-	15.24	M71C-1000-595-WT	BMP71	M71-R6000HF	1
⊙	B-595	F	25.40	-	15.24	M71C-1000-595-YL	BMP71	M71-R6000HF	1
▲	B-423	F A H	25.40	4.75	-	M71-14-423	BMP71	M71-R6000HF	750
▲	B-423	F A H	25.40	6.99	-	M71-15-423	BMP71	M71-R6000HF	750
▲	B-498	F R	25.40	12.70	-	M71-17-498	BMP71	M71-R6200	500
▲	B-430	F A H	25.40	12.70	-	M71-17-430	BMP71	M71-R6000HF	500
▲	B-423	F A H	25.40	12.70	-	M71-17-423	BMP71	M71-R6000HF	500
▲	B-498	F R	25.40	19.05	-	BM71-18-498	M611, BMP61, BMP71	R6200	2500
▲	B-499	F N A	25.40	19.05	-	M71-18-499	BMP71	M71-R4300	250
▲	B-498	F R	25.40	19.05	-	M71-18-498	BMP71	M71-R6200	250
▲	B-498		25.40	25.40	-	BM71-19-498	M611, BMP61, BMP71	R6200	2500
▲	B-499	F N A	25.40	25.40	-	M71-19-499	BMP71	M71-R4300	250
▲	B-498		25.40	25.40	-	M71-19-498	BMP71	M71-R6200	250
▲	B-423	F A H	25.40	50.80	-	BM71-20-423	M611, BMP61, BMP71	R6000HF	1000
▲	B-423	F A H	25.40	50.80	-	M71-20-423	BMP71	M71-R6000HF	100
▲	B-423	F A H	25.40	76.20	-	M71-22-423	BMP71	M71-R6000HF	100
▲	B-499		38.10	6.35	-	M71-28-499	BMP71	M71-R4300	750
▲	B-498	F R	38.10	12.70	-	BM71-29-498	M611, BMP61, BMP71	R6200	5000
▲	B-499	F N A	38.10	12.70	-	M71-29-499	BMP71	M71-R4300	500
▲	B-498	F R	38.10	12.70	-	M71-29-498	BMP71	M71-R6200	500
▲	B-499	F N A	38.10	19.05	-	M71-30-499	BMP71	M71-R4300	250
▲	B-498		38.10	19.05	-	M71-30-498	BMP71	M71-R6200	250
▲	B-499	F N A	38.10	25.40	-	M71-31-499	BMP71	M71-R4300	250
▲	B-498	F R	38.10	25.40	-	M71-31-498	BMP71	M71-R6200	250
▲	B-423	F A H	38.10	25.40	-	M71-31-423	BMP71	M71-R6000HF	250
▲	B-498		38.10	38.10	-	M71-32-498	BMP71	M71-R6200	250
⊙	B-499	F N A	48.26	-	9.10	M71C-1900-499	BMP71	M71-R4300	1
⊙	B-498		48.26	-	9.10	M71C-1900-498	BMP71	M71-R6200	1
▲	B-499	F N A	48.26	6.35	-	M71-81-499	BMP71	M71-R4300	750
▲	B-488	F A	48.26	6.35	-	M71-81-488	BMP71	M71-R4300	750
▲	B-499	F N A	48.26	25.40	-	M71-78-499	BMP71	M71-R4300	250

Order references beginning with "B" indicate bulk rolls.

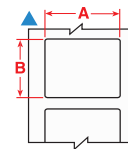


See pages 49 - 51 for a detailed material index.

## Lean lab identification

### Bottle tamper seal labels

- Brady's bottle seal identification provides tracking information with the added feature of security. These labelling materials are designed to fracture easily in order to show signs of sample tampering and to prevent one-piece label removal.



Labels are shown in order of label width.

The background colours in the Order Reference column represent the material colour.



Diagram	Material	Special Properties	Label Width A (mm)	Label Height B (mm)	Order Reference	Printer Compatibility	Printer Ribbon Series	Labels per Roll
▲	B-351	F	25.40	12.70	M71-17-351	BMP71	M71-R6000HF	500
▲	B-351	F	25.40	50.80	M71-20-351	BMP71	M71-R6000HF	100
▲	B-351	F	38.10	25.40	M71-31-351	BMP71	M71-R6000HF	250
▲	B-351	F	76.20	48.26	M71-37-351	BMP71	M71-R6000HF	100

### Water dissolvable labels

The B-403 water dissolvable paper label is self-adhesive and extremely easy to apply. Exposing the label to warm water will completely dissolve it within 30 seconds, without damage to the surface it was applied to, and without leaving any residue.

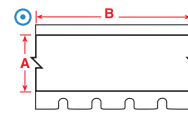
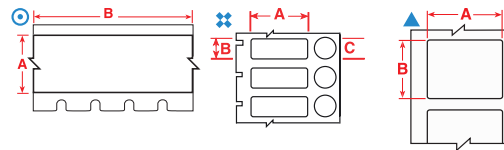


Diagram	Material	Special Properties	Label Width A (mm)	Label Length B (m)	Order Reference	Printer Compatibility	Printer Ribbon Series	Labels per Roll
⊙	B-403	F	48.25	15.25	M71C-1500-403	BMP71	R6400	1
⊙	B-403	F	48.25	15.25	M71C-750-403	BMP71	R6400	1

### Bottles / flasks & dishes

- Brady's labels for bottles, flasks and dishes are easy to handle and flexible. This enables the labels to be placed on curved containers and remain attached and legible, even after being subjected to freezing, liquid nitrogen and heat.



Labels are shown in order of label width.

The background colours in the Order Reference column represent the material colour.



Diagram	Material	Special Properties	Label Width A (mm)	Label Height B (mm)	Label Length B (m)	Diameter C (mm)	Printable Area Width PW (mm)	Printable Area Height PH (mm)	Order Reference	Printer Compatibility	Printer Ribbon Series	Labels per Roll
⊙	B-430	F A H	12.70	-	15.24	-	-	-	M71C-500-430	BMP71	M71-R6000HF	1
▲	B-423	F A H	12.70	12.70	-	-	-	-	BM71-7-423	M611, BMP61, BMP71	R6000HF	5000
▲	B-423	F A H	12.70	12.70	-	-	-	-	M71-7-423	BMP71	M71-R6000HF	500
▲	B-423	F A H	25.40	4.75	-	-	-	-	M71-14-423	BMP71	M71-R6000HF	750
▲	B-423	F A H	25.40	6.99	-	-	-	-	M71-15-423	BMP71	M71-R6000HF	750
▲	B-492	F N H L	25.40	9.53	-	-	-	-	M71-16-492	BMP71	M71-R6400	500
▲	B-498	F R	25.40	12.70	-	-	-	-	M71-17-498	BMP71	M71-R6200	500
▲	B-492	F N H L	25.40	12.70	-	-	-	-	M71-17-492	BMP71	M71-R6400	500
▲	B-430	F A H	25.40	12.70	-	-	-	-	M71-17-430	BMP71	M71-R6000HF	500
▲	B-423	F A H	25.40	12.70	-	-	-	-	M71-17-423	BMP71	M71-R6000HF	500
⊙	B-492	F H L	25.40	12.70	-	9.53	-	-	M71-118-492	BMP71	M71-R6400	500
▲	B-492	F N H L	25.40	25.40	-	-	-	-	M71-19-492	BMP71	M71-R6400	250
▲	B-423	F A H	25.40	50.80	-	-	-	-	BM71-20-423	M611, BMP61, BMP71	R6000HF	1000
▲	B-423	F A H	25.40	50.80	-	-	-	-	M71-20-423	BMP71	M71-R6000HF	100
▲	B-423	F A H	25.40	76.20	-	-	-	-	M71-22-423	BMP71	M71-R6000HF	100
▲	B-498	F R	38.10	12.70	-	-	-	-	BM71-29-498	M611, BMP61, BMP71	R6200	5000
▲	B-499	F N A	38.10	12.70	-	-	-	-	M71-29-499	BMP71	M71-R4300	500
▲	B-498	F R	38.10	12.70	-	-	-	-	M71-29-498	BMP71	M71-R6200	500
▲	B-499	F N A	38.10	19.05	-	-	-	-	M71-30-499	BMP71	M71-R4300	250
▲	B-427	F N S	38.10	19.05	-	-	38.10	19.05	M71-30-427-AW	BMP71	M71-R4300	250
▲	B-490	F N H L	41.28	15.24	-	-	-	-	M71-76-490	BMP71	M71-R4300	500
▲	B-499	F N A	48.26	25.40	-	-	-	-	M71-78-499	BMP71	M71-R4300	250
▲	B-492	F N H L	48.26	25.40	-	-	-	-	M71-78-492	BMP71	M71-R6400	250

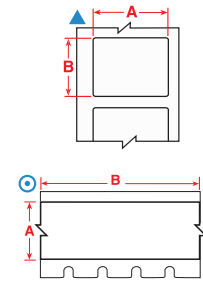
Order references beginning with "B" indicate bulk rolls. \*Order references ending with "AW" indicate all white labels with no clear area.

## Lean lab identification



### General lab equipment labels

- Just like a durable sample label lets you know which sample you are holding, a cabinet or drawer label can inform you of the cabinet's content. With proper identification, time spent looking for the right sample or tool can be invested in what really matters. Brady offers a range of materials suitable for identifying drawers, cabinets, shelves, storage units and laboratory equipment.



Labels are shown in order of label width.


The background colours in the Order Reference column represent the material colour.

Diagram	Material	Special Properties	Label Width A (mm)	Label Height B (mm)	Label Length B (m)	Order Reference	Printer Compatibility	Printer Ribbon Series	Labels per Roll
⊙	B-430	F A H	9.53	-	15.24	M71C-375-430	BMP71	M71-R6000HF	1
▲	B-423		9.53	9.53	-	M71-3-423	BMP71	M71-R6000HF	500
▲	B-423		10.16	10.16	-	M71-4-423	BMP71	M71-R6000HF	500
⊙	B-595	F	12.70	-	15.24	M71C-500-595-BK	BMP71	M71-R4400-WT	1
⊙	B-595	F	12.70	-	15.24	M71C-500-595-BL	BMP71	M71-R4400-WT	1
⊙	B-595	F	12.70	-	15.24	M71C-500-595-CL	BMP71	M71-R6000HF	1
⊙	B-595	F	12.70	-	15.24	M71C-500-595-GN	BMP71	M71-R4400-WT	1
⊙	B-595	F	12.70	-	15.24	M71C-500-595-OR	BMP71	M71-R6000HF	1
⊙	B-595	F	12.70	-	15.24	M71C-500-595-RD	BMP71	M71-R4400-WT	1
⊙	B-595	F	12.70	-	15.24	M71C-500-595-WT	BMP71	M71-R6000HF	1
⊙	B-595	F	12.70	-	15.24	M71C-500-595-YL	BMP71	M71-R6000HF	1
⊙	B-430	F A H	12.70	-	15.24	M71C-500-430	BMP71	M71-R6000HF	1
⊙	B-423		12.70	-	15.24	M71C-500-423	BMP71	M71-R6000HF	1
▲	B-423	F A H	12.70	12.70	-	BM71-7-423	M611, BMP61, BMP71	R6000HF	5000
▲	B-423	F A H	12.70	12.70	-	M71-7-423	BMP71	M71-R6000HF	500
⊙	B-595	F	25.40	-	15.24	M71C-1000-595-BK	BMP71	M71-R4400-WT	1
⊙	B-595	F	25.40	-	15.24	M71C-1000-595-BL	BMP71	M71-R4400-WT	1
⊙	B-595	F	25.40	-	15.24	M71C-1000-595-CL	BMP71	M71-R6000HF	1
⊙	B-595	F	25.40	-	15.24	M71C-1000-595-GN	BMP71	M71-R4400-WT	1
⊙	B-595	F	25.40	-	15.24	M71C-1000-595-OR	BMP71	M71-R6000HF	1
⊙	B-595	F	25.40	-	15.24	M71C-1000-595-RD	BMP71	M71-R4400-WT	1
⊙	B-595	F	25.40	-	15.24	M71C-1000-595-WT	BMP71	M71-R6000HF	1
⊙	B-595	F	25.40	-	15.24	M71C-1000-595-YL	BMP71	M71-R6000HF	1
⊙	B-430	F A H	25.40	-	15.24	M71C-1000-430	BMP71	M71-R6000HF	1
▲	B-423		25.40	9.53	-	BM71-16-423	M611, BMP61, BMP71	R6000HF	5000
▲	B-430		25.40	9.53	-	M71-16-430	BMP71	M71-R6000HF	500
▲	B-423		25.40	9.53	-	M71-16-423	BMP71	M71-R6000HF	500
▲	B-423		25.40	12.70	-	BM71-17-423	M611, BMP61, BMP71	R6000HF	5000
▲	B-430	F A H	25.40	12.70	-	M71-17-430	BMP71	M71-R6000HF	500
▲	B-423	F A H	25.40	12.70	-	M71-17-423	BMP71	M71-R6000HF	500
▲	B-423		25.40	25.40	-	BM71-19-423	M611, BMP61, BMP71	R6000HF	2500
▲	B-423		25.40	25.40	-	M71-19-423	BMP71	M71-R6000HF	250
▲	B-424	F	25.40	50.80	-	BM71-20-424	M611, BMP61, BMP71	R4300	1000
▲	B-423	F A H	25.40	50.80	-	BM71-20-423	M611, BMP61, BMP71	R6000HF	1000
▲	B-424	F	25.40	50.80	-	M71-20-424	BMP71	M71-R4300	100
▲	B-423	F A H	25.40	50.80	-	M71-20-423	BMP71	M71-R6000HF	100
▲	B-430		38.10	9.53	-	M71-45-430	BMP71	M71-R6000HF	500
▲	B-423		38.10	12.70	-	BM71-29-423	M611, BMP61, BMP71	R6000HF	5000
▲	B-423		38.10	12.70	-	M71-29-423	BMP71	M71-R6000HF	500
▲	B-423	F A H	38.10	25.40	-	M71-31-423	BMP71	M71-R6000HF	250
▲	B-423		38.10	38.10	-	M71-32-423	BMP71	M71-R6000HF	250
⊙	B-430	F A H	48.26	-	15.24	M71C-1900-430	BMP71	M71-R6000HF	1
⊙	B-595		50.80	-	15.24	M71C-2000-595-BK	BMP71	M71-R4400-WT	1
⊙	B-595		50.80	-	15.24	M71C-2000-595-BL	BMP71	M71-R4400-WT	1
⊙	B-595		50.80	-	15.24	M71C-2000-595-CL	BMP71	M71-R6000HF	1
⊙	B-595		50.80	-	15.24	M71C-2000-595-GN	BMP71	M71-R4400-WT	1
⊙	B-595		50.80	-	15.24	M71C-2000-595-OR	BMP71	M71-R6000HF	1
⊙	B-595		50.80	-	15.24	M71C-2000-595-RD	BMP71	M71-R4400-WT	1
⊙	B-595		50.80	-	15.24	M71C-2000-595-WT	BMP71	M71-R6000HF	1
⊙	B-595		50.80	-	15.24	M71C-2000-595-YL	BMP71	M71-R6000HF	1



This section provides a quick reference to Brady materials listed throughout this catalogue, including basic attributes, applications and regulatory compliance where applicable.

For more detailed material attribute and performance information, please refer to the material's Technical Data Sheet, listed at [www.bradyeurope.com/tds](http://www.bradyeurope.com/tds).

Brady Material No.	Material	Finish	Colour	Temp (°C) (Tested for 30 days)		Performance Attributes	Properties & Applications	Approval/Compliance
				Min.	Max.			
B-109	Polyethylene Tag	Matt	White	-40 °C	49 °C		White polyethylene tag material with matt finish. Excellent multi-purpose tag for identifying multiconductor cables, inventory, safety warning repair and work-in-processing – manufacturing. Good weatherability, humidity resistance and legibility after solvent exposure.	–
B-145	Polyethylene Tag	Matt	Grey	-40 °C	100 °C		This multipurpose material can be used for a variety of tag applications including identification of multiconductor cables, equipment, safety warning repair and workinprogress.	–
B-342	Heat-shrink Polyolefin Sleeve	Matt	White	-55 °C	130.6 °C		3:1 ratio heat shrinkable wire marking sleeve that fits snugly around wires for identification and protection. Fade-resistant and flame retardant. Also available in yellow and black.	UL Recognised to UL224; SAE-AMS-DTL-23053/5 C (Class 1); SAE-AS-81531
B-351	Tamper-resistant Vinyl	Matt	White	-40 °C	80 °C		White vinyl material with matt finish. Tamper evident material fractures to show signs of product tampering and prevent one-piece removal.	–
B-362	Tamper-resistant Metallised Vinyl	Gloss	Silver	-70 °C	80 °C		Designed to fracture easily in order to show signs of product tampering and to prevent one-piece label removal. Use caution when removing from liner as material is fragile.	–
B-403	Paper	Matt	White	-40 °C	78 °C			–
B-412	Polypropylene Tag	Matt	White	-40 °C	100 °C		White polypropylene tag material with matt finish. Offers high print legibility and high tensile strength.	–
B-422	Polyester	Gloss	White	-40 °C	100 °C		Designed to withstand solvent exposure. Used for component identification, barcoding, asset and inventory tracking.	UL Recognised; CSA Accepted
B-423	Polyester	Gloss	White	-70 °C	110 °C		Widely used for component identification, barcoding, asset and inventory tracking.	UL Recognised; CSA Accepted; AGA Approved; Halogen Free (DIN VDE 0472/part 815)
B-424	Paper	Matt	White	-40 °C	50 °C			–
B-425	Polypropylene	Matt	White	-70 °C	80 °C		White polypropylene material stock with matt finish for thermal transfer printing or write-on applications. Excellent solvent resistance and print performance; not recommended for long-term outdoor use.	UL Recognised; CSA Accepted; Halogen Free (DIN VDE 0472/part 815)
B-427	Self-laminating Vinyl	Matt	White/Transparent	-40 °C	60 °C		Thermal transfer printable, self-laminating material. These labels have a printable area with a clear "tail" that wraps around the marker. The "tail" serves as overlaminates to protect the print. Superior resistance to abrasion, solvents, water, oil and dirt. Also available in grey, brown, green, yellow, blue, red, purple, orange	UL Recognised to UL969 Labelling and Marking Standard when printed with the Brady Series R4300 and R6200 ribbons. See UL files MH17154 for specific details. Brady customers should specify at purchase if they require UL Recognised B-427 labels. Brady sells both UL Recognised B-427 labels and non-approved labels depending on customer requirements.
B-428	Metallised Polyester	Matt	Silver	-70 °C	120 °C		Thermal transfer printable metallised polyester with matt finish. Withstands solvents and variable temperatures. Excellent for serial and rating plate applications with name-plate quality and a metal-looking finish.	UL Recognised; CSA Accepted; Halogen Free (DIN VDE 0472/part 815)
B-430	Polyester	Gloss	Clear	-70 °C	100 °C			UL Recognised; CSA Accepted
B-437	Polyvinylfluoride	Matt	White	-70 °C	135 °C		Polyvinylfluoride label material with matt finish. Used in wire and cable identification applications where self-extinguishing features are required. This label material utilises an adhesive for heavy-duty applications and is available in continuous or die-cut formats. Excellent resistance to water, oil and other common fluids. Also available in yellow.	MIL-M-87958 Pressure Sensitive Adhesive Wire or Cable Marker and Identification specification
B-459	Polyester	Matt	White	-40 °C	100 °C			UL Recognised; CSA Accepted
B-461	Self-laminating Polyester	Matt	White/Transparent	-196 °C	110 °C		Permanent adhesive; suitable for liquid nitrogen application if material is wrapped around itself, as in self-lamination; write-on capabilities. Temperature range increases to 121°C when used in autoclave process	–

# Master material index

Brady Material No.	Material	Finish	Colour	Temp (°C) (Tested for 30 days)		Performance Attributes	Properties & Applications	Approval/Compliance
				Min.	Max.			
B-472	Polyimide	Matt	White	-70 °C	100 °C		Cable and wire bundle applications and label applications where self-extinguishing properties are required	—
B-473	Static Dissipative Polyester	Gloss	White	-40 °C	120 °C			UL Recognised; CSA Accepted; Meets surface resistivity values in the recommended range for dissipative ESD packaging materials as defined by ANSI/ESD S541-2008 (between 10 <sup>4</sup> and 10 <sup>11</sup> ohms)
B-481	StainerBondz™ Polyester	Matt	White	-80 °C	130 °C		White polyester will remain resistant when exposed to xylene and other chemicals that are commonly used in the slide staining process	—
B-483	Polyester	Gloss	White	-40 °C	120 °C		White polyester thermal transfer printable material with glossy finish and aggressive adhesive specifically designed for powder coated surfaces.	UL Recognised; CSA Accepted
B-483/B-634	Polyester with Polyester Overlaminate	Gloss	White	-18 °C	54 °C		ToughStripe™ floor marking thermal transfer printable polyester with ultra-aggressive adhesive which allows for printable messages to be placed on the floor. The floor marking roll ships with a separate roll of B-634 Polyester Overlaminate to protect your legend. Ideal to create custom-printed floor labels. Available in white, yellow, red, orange, green, blue and black.	—
B-486	Metallised Polyester	Matt	Silver	-40 °C	120 °C		Metallized polyester thermal transfer printable material, ideal for indoor product labeling, asset tracking and general ID on very rough surfaces.	UL Recognised; CSA Accepted
B-488	Polyester	Matt	White	-40 °C	145 °C		White polyester thermal transfer printable material, similar to B-423, but with matt finish. Widely used for component identification, barcoding, asset and inventory tracking.	UL Recognised; CSA Accepted
B-489	Polyester	Matt	White	-40 °C	120 °C			UL Recognised; CSA Accepted
B-490	Freezerbondz™ Polyester	Matt	White	-196 °C	130 °C		Can be applied to frozen surfaces including glass and polypropylene stored in liquid nitrogen, except for Vial Tops. Material must slightly overlap itself.	—
B-492	Freezerbondz™ Polyester	Matt	White	-196 °C	110 °C		Ultra thin; can label frosted/frozen (with overlap) or room temperature labels and lasts in liquid nitrogen and hot water baths	—
B-498	Vinyl Cloth	Semi-gloss	White	-40 °C	80 °C		White vinyl cloth label material with glossy finish. The adhesive and cloth backing give excellent holding power, while being repositionable and removing cleanly.	UL Recognised
B-499	Nylon Cloth	Matt	White	-40 °C	90 °C		Nylon cloth material with matt finish. The adhesive allows labelling in environments with heat, cold, oil and dirt. Also available in yellow.	UL Recognised; CSA Accepted; Halogen Free (DIN VDE 0472/ part 815) Approvals are for White material only
B-529	Polypropylene	Gloss	White	-40 °C	100 °C			—
B-530	Tamper-resistant Vinyl		White	-40 °C	90 °C		Brady's tamper resistant tape destructs into tiny fragments when tampered with.	—
B-582	Phosphorescent Polyester	Gloss	Photoluminescent	-40 °C	80 °C		Phosphorescent Polyester is used for exit and directional signs, identification of fire alarms and extinguishers, low location egress pathway markings, and directional systems for escape or evacuations routes.	ASTM E-2072-00 / ASTM E-2073-00; ASTM E-162; ASTM E-648; ASTM E-662; IMO Resolution A.752(18); ISO/CD 15370; Marine Safety Committee MSC.27(61); DIN 67510 (Parts 1 - 4) Meets OSHA 1910.37
B-584	Reflective Tape	Gloss	Orange	-40 °C	70 °C		Suitable for outdoor use. Also available in silver and yellow.	—
B-595	Vinyl	Gloss	White	-40 °C	82 °C		Durable, low-shrink vinyl with our most aggressive adhesive. Conforms to irregular, curved, rough and highly textured surfaces (painted cinder blocks, uneven wood, textured plastics, paper-jacketed pipes, powder-coated surfaces). Adheres to "difficult" low-surface energy items (PVC piping, blow-moulded equipment cases, ABS plastics, recycled plastics). Available in a wide range of colours.	BS5609:1986 Section 2 and section 3



Abrasion resistance



Electrostatic dissipative



Fuel/oil resistance



High heat resistance



Low temperature resistance



Removable



Solvent/chemical resistance



Tamper-indicating



Ultra-aggressive adhesive

Brady Material No.	Material	Finish	Colour	Temp (°C) (Tested for 30 days)		Performance Attributes	Properties & Applications	Approval/Compliance
				Min.	Max.			
B-642	Polyvinylfluoride	Matt	White/Transparent	-70 °C	120 °C		Applications requiring self-extinguishing identification. Self-laminating, wire, cable and laboratory vial marking. Excellent abrasion and smudge resistance.	-
B-717	Polyimide	Gloss	White	-70 °C	300 °C		White polyimide material with glossy finish and ultra-durable adhesive. Used in printed circuit board and electronic component pre-process labelling. Designed for use with extreme wash protocol and cleaning chemicals. Surface resistivity values in the recommended range for dissipative ESD packing materials.	UL Recognised; Meets the requirements of ANSI/ESD S541-2008 (between 10 <sup>4</sup> and 10 <sup>11</sup> ohms) for dissipative ESD packaging materials; Meets the performance requirements of MIL-STD-202G, Method 215K
B-718	Polyimide	Gloss	White	-70 °C	300 °C		White polyimide material, low profile (1 mil thickness), with glossy finish and ultra-durable adhesive. Used in printed circuit board and electronic component pre-process labelling. Designed for use with extreme wash protocol and cleaning chemicals. Surface resistivity values in the recommended range for dissipative ESD packing materials.	UL Recognised; Meets the requirements of ANSI/ESD S541-2008 (between 10 <sup>4</sup> and 10 <sup>11</sup> ohms) for dissipative ESD packaging materials; Meets the performance requirements of MIL-STD-202G, Method 215K
B-719	Polyimide	Matt	White	-70 °C	300 °C		White polyimide material with matt finish and ultra-durable adhesive. Used in printed circuit board and electronic component pre-process labelling. Designed for use with extreme wash protocol and cleaning chemicals. Surface resistivity values in the recommended range for dissipative ESD packing materials.	UL Recognised; Meets the requirements of ANSI/ESD S541-2008 (between 10 <sup>4</sup> and 10 <sup>11</sup> ohms) for dissipative ESD packaging materials; Meets the performance requirements of MIL-STD-202G, Method 215K
B-724	Polyimide	Matt	Amber	-70 °C	300 °C		Amber polyimide material with matt finish and ultra-durable adhesive. Used in printed circuit board and electronic component pre-process labelling. Designed for use with extreme wash protocol and cleaning chemicals.	Meets the performance requirements of MIL -STD-202G, Notice 12, Method 215K; Meets the requirements of SAE AS81531 Marking of Electrical Insulating Material
B-727	Polyimide	Gloss	White	-70 °C	300 °C		White polyimide material with glossy finish and ultra-durable adhesive. Used in printed circuit board and electronic component pre-process labelling. Designed for use with extreme wash protocol and cleaning chemicals.	UL Recognised; Meets the performance requirements of MIL -STD-202G, Notice 12, Method 215K; Dibutyltin and Dioctyltin free.
B-7593	Polyethylene Foam Laminate Polyester	Gloss	White, Yellow, Red, Green, Silver, Black	-40 °C	100 °C		EPREP (Engraved Panel REplacement labels) are designed for patch panel identification in identifying external push-buttons, switches and internal connection points. Also available in black, green, red, silver and yellow.	-
B-7598	Polyester Tag	Gloss	White, Yellow, Red, Green, Silver, Black, Blue	-40 °C	100 °C			Parts supplied in White, Black or Silver are Halogen Free as per IEC 61249-2-21 (2003-11)
B-7599	Polyethylene Tag	Matt	Yellow	-40 °C	50 °C			-
B-7641	Heat-shrink Polyolefin Sleeve	Matt	White	-55 °C	105 °C		2:1 ratio heat shrinkable, zero halogen wire marking sleeves. The wire marking sleeves offer outstanding fire safety properties and minimal smoke emission. Also available in yellow.	BS-6853 (1999) Vehicle Category 1A; EN-45545-2, requirement 24, Vehicle Category HL3; Zero Halogen
B-7643	Thermoplastic Polyester Polyurethane	Matt	White, Yellow	-40 °C	90 °C			Halogen free per IEC 61249-2-21 (2003-11), Adherence: SAE-AS81531-1998, Flame retardant: MIL-STD-202G
B-7696	Vinyl Tag	Gloss	White, Yellow	-40 °C	70 °C			UL94V0
B-7697	Polyester Tag	Matt	White	-40 °C	120 °C			-
B-854	Metal Detectable Polyester	Matt	White	-40 °C	110 °C		Tough against harsh washdown environments; metal detectable. Also available in yellow.	-
B-855	Polyester	Matt	White	-40 °C	110 °C		Tough against harsh washdown environments. Also available in yellow.	-



WorkHorse™  
Labels



MetaLabel™  
Series



ToughBond™  
Series



Defender™  
Series

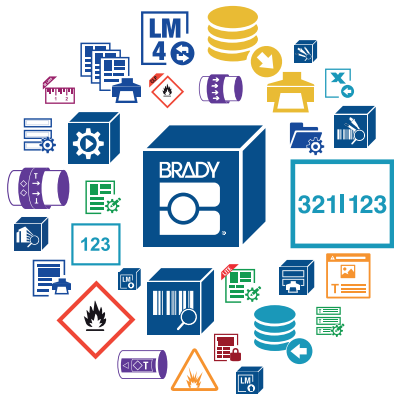


CleanLift™  
Series



UltraTemp™  
Series

## Design any label with Brady Workstation apps



Brady Workstation offers professional, intuitive apps to design quality product and cable labels and safety signs. Label design becomes easier, faster and quickly adaptable to new label norms thanks to centralised updates.

### Select the apps you need

Simply select the apps you need, download the 30-day trial and purchase when satisfied.



### Brady Workstation Basic Design Software Suite

Get everyone in your facility up and running quickly on as many computers as you like with this free label creation software! You'll have basic design, formatting, graphics and simple barcode libraries to create labels like a pro!

The Basic Suite is included with every printer, all you need to do is download it.

**[Workstation.BradyID.com/Free](http://Workstation.BradyID.com/Free)**



### Brady Workstation Product and Wire Identification Software Suite

Quickly identify your products and wires with customised text or graphical labels, using serialised or imported data.

**[Workstation.BradyID.com/ProductandWire](http://Workstation.BradyID.com/ProductandWire)**



### Brady Workstation Safety and Facility Identification Software Suite

Keep your facility safe and compliant by creating custom signs, label and pipemarkers, adding visual safety guidance.

**[Workstation.BradyID.com/SafetyAndFacility](http://Workstation.BradyID.com/SafetyAndFacility)**



Try it today! Discover Brady Workstation at [www.bradyeurope.com/workstation](http://www.bradyeurope.com/workstation) or download at [workstation.bradyid.com](http://workstation.bradyid.com).

## PRINTER

Description	The BMP71 is your essential tool that handles all your labelling needs.
Includes	This printer kit ships in a hard case with Rechargeable NiMH Battery, AC Adaptor, USB Communications Cable, TLS2200® / HandiMark™ Material Roll Adaptor, Quick Start Guide, Product CD (w/ Printer Driver, Tutorials, Full User's Guide), Cleaning Kit, a Brady Workstation Suite, M71C-2000-595-WT, M71-31-423 and M71-R6000
Applications	Electronic & General Labelling; Laboratory Identification; Safety Identification; Wire & Cable Marking
Print Speed (mm/sec)	38.10
Internal Memory Capacity	200 MB -up to 100,000 labels
Cutter	Manual cut Between labels or at end of print job
Keyboard Type	QWERTY, QWERTZ, AZERTY, CYRILLIC
Colour Capability	Monocolour
Language Support	Danish, Dutch, English, Finnish, French, Italian, Norwegian (Bokmål), Polish, Portuguese, Romanian, Spanish, Swedish, Bulgarian, Czech, German, Hungarian, Russian, Slovak, Slovenian
Portability	Yes
Weight (kg)	2.49
Size W x D x L (mm)	107 x 106 x 328
Operating Temperature	5°C - 40°C
Operating Humidity	10%-90% (non-condensing)
Storage Temperature	-30° to 60° C
Warranty	2 years

## MEDIA SUPPORTED

Materials Supported	Over 400 Stock Parts, Continuous, Die Cut and Bulk Label Rolls
Continuous vs Die-cut Labels	Continuous Tape & Die Cut Labels
Custom Labels	Yes
Smart Cell	Yes
Max. Label Width (mm)	50.80 mm
Min. Label Width (mm)	6.40 mm
Max. Liner Width (mm)	57
Recommended Usage per Day	1000 50.80 x 25.40mm labels per day

## POWER SUPPLY

Battery Type	Rechargeable NiMH Battery
Power Supply	AC Adaptor Rechargeable Battery

## DISPLAY

Display	Colour LCD Screen
Display Resolution	320 x 240 px

## FONTS/GRAPHICS/SYMBOLOLOGIES

Max. Lines of Text	25
Text Sizes (pt)	4 - 170 pt
Built-in Fonts	Arial Alternative Monospaced Swiss 721
Built-in Symbols	500+ symbols included
Bar Code Capability	Yes
Bar Code Type	Code 39 and 128, other via software

## PRINTING FUNCTIONS

Serialisation	Simple & Simultaneous & Single Advanced & Multiple Advanced
Print Resolution (dpi)	300

## SOFTWARE & CONNECTIVITY

Connectivity Options	USB 2.0, USB Flash Drive, Optional WIFI (factory-installed)
Software Compatibility	Brady Workstation, LabelMark, MarkWare





## Printers



**i** For more information about the Brady Workstation Software Suites, see page 52.

Order Reference	Art. No.	Description
BMP71-AZERTY-EU	710601	BMP71 Label Printer - AZERTY
BMP71-AZ-EU-PWID	198643	BMP71 Label Printer - AZERTY with Brady Workstation PWID Suite
BMP71-AZ-EU-SFIDS	198679	BMP71 Label Printer - AZERTY with Brady Workstation SFID suite
BMP71-CYRILLIC-EU	710604	BMP71 Label Printer - CYRILLIC
BMP71-CYR-PWID	198644	BMP71 Label Printer - CYRILLIC with Brady Workstation PWID Suite
BMP71-CYR-SFIDS	198680	BMP71 Label Printer - CYRILLIC with Brady Workstation SFID suite
BMP71-QWERTY-EU	710599	BMP71 Label Printer - QWERTY EU
BMP71-QY-EU-PWID	198645	BMP71 Label Printer - QWERTY EU with Brady Workstation PWID Suite
BMP71-QY-EU-SFIDS	198681	BMP71 Label Printer - QWERTY EU with Brady Workstation SFID suite
BMP71-QWERTY-UK	710600	BMP71 Label Printer - QWERTY UK
BMP71-QY-UK-PWID	198646	BMP71 Label Printer - QWERTY UK with Brady Workstation PWID Suite
BMP71-QY-UK-SFIDS	198682	BMP71 Label Printer - QWERTY UK with Brady Workstation SFID suite
BMP71-US	115157	BMP71 Label Printer - QWERTY US
BMP71-QWERTZ-EU	710603	BMP71 Label Printer - QWERTZ
BMP71-QZ-EU-PWID	198647	BMP71 Label Printer - QWERTZ with Brady Workstation PWID Suite
BMP71-QZ-EU-SFIDS	198683	BMP71 Label Printer - QWERTZ with Brady Workstation SFID suite

The Basic Suite is included with every printer, all you need to do is download it. [Workstation.BradyID.com/Free](http://Workstation.BradyID.com/Free)

## Printer kits

These BMP71 label printer kits have been created for everyone active within the Electrical & Teledatcom industries. These interestingly priced portable printer kits come with a practical hard case, including a printer, label materials, a battery and accessories.



Order Reference	Art. No.	Description
BMP71-AZ-EU-EL*EC	198670	BMP71 Label Printer - Electrical Printer Kit - AZERTY
BMP71-CYR-EL*EC	198672	BMP71 Label Printer - Electrical Printer Kit - CYRILLIC
BMP71-QY-EU-EL*EC	198674	BMP71 Label Printer - Electrical Printer Kit - QWERTY - EU
BMP71-QY-UK-EL*EC	198676	BMP71 Label Printer - Electrical Printer Kit - QWERTY - UK
BMP71-QZ-EU-EL*EC	198678	BMP71 Label Printer - Electrical Printer Kit - QWERTZ
BMP71-AZ-EU-DA**TA	198669	BMP71 Label Printer - Voice- and Datacom Kit - AZERTY
BMP71-CYR-DA**TA	198671	BMP71 Label Printer - Voice- and Datacom Kit - CYRILLIC
BMP71-QY-EU-DA**TA	198673	BMP71 Label Printer - Voice- and Datacom Kit - QWERTY - EU
BMP71-QY-UK-DA**TA	198675	BMP71 Label Printer - Voice- and Datacom Kit - QWERTY - UK
BMP71-QZ-EU-DA**TA	198677	BMP71 Label Printer - Voice- and Datacom Kit - QWERTZ

\* This printer kit ships in a hard case with a Rechargeable NiMH Battery, AC Adaptor, USB Communications Cable, TLS2200® / HandiMark™ Material Roll Adaptor, Quick Start Guide, Product CD (w/ Printer Driver, Tutorials, Full User's Guide), Cleaning Kit, a Brady Workstation Product & Wire Identification Suite, M71-21-427, M71C-2000-595-WT, M71-31-423, M71-R4300 and M71-R6000.

\*\* This printer kit ships in a hard case with a Rechargeable NiMH Battery, AC Adaptor, USB Communications Cable, TLS2200® / HandiMark™ Material Roll Adaptor, Quick Start Guide, Product CD (w/ Printer Driver, Tutorials, Full User's Guide), Cleaning Kit, a Brady Workstation Product & Wire Identification Suite, M71-19-427, M71C-2000-595-WT, M71-31-423, M71-R4300 and M71-R6000.

## Accessories



Soft carry case



Cleaning kit



Quick charger

Art. No.	Description
710612	AC Adaptor - Europe 220V
710613	AC Adaptor - UK 240V
114886	Cleaning Kit
114881	Hard-sided Carry Case
147998	Media Adaptor for BMP71 Printer
710614	Quick Charger - Europe 220V
710615	Quick Charger - UK 240V
114884	Quick Charger - US 120V
114882	Soft Carry Case
114885	Spare Battery

## 2 year warranty on all Brady portable printers

Brady offers a 2 year warranty on every Brady Mobile Printer sold.

This manufacturer's warranty is completely free and highlights Brady's commitment to quality and on-the-job reliability.

Flash this QR Code to access to all the details about the Brady warranty.



## What if you want more extensive support ?

Brady offers Assist Base, Assist Field and Assist Custom service contracts which include priority assistance for 1, 3 or 5 years to guarantee continued support and the ultimate printer reliability, even in demanding working environments. These agreements also include many great extras versus our free, standard 2 year warranty, such as: spare parts, a solution within 2 business days, free annual preventative maintenance, repair transportation costs, priority access to the technical service team or even a specialist at your premises.

**Get all of these extra assurances at the cost of just 1 flat fee repair!**

### Our training and setup service

- **Brady Setup Base** : Stress free installation of your Brady printer and software by screensharing. We help you produce your first labels.
- **Brady Setup Field** : Stress free installation of your Brady printer and software by a Brady specialist at your premises. We help you produce your first labels.
- **Brady Training Half/Whole day** : Hands-on training by a Brady specialist at your premises.



**Please contact us for additional information!**

**Africa**

Randburg, South Africa  
 Tel.: +27 11 704 3295  
 Email: africa@bradycorp.com

**Benelux**

Zele, Belgium  
 Tel.: +32 (0) 52 45 78 11  
 Email: benelux@bradycorp.com

**Central & Eastern Europe**

Bratislava, Slovakia  
 Tel.: +421 2 3300 4800  
 Email: central\_europe@bradycorp.com

**Denmark**

Odense  
 Tel.: +45 66 14 44 00  
 Email: denmark@bradycorp.com

**France**

Roncq  
 Tel.: +33 (0) 3 20 76 94 48  
 Email: france@bradycorp.com

**Germany, Austria & Switzerland**

Egelsbach, Germany  
 Tel.: +49 (0) 6103 7598 660  
 Email: germany@bradycorp.com

**Hungary**

Budaörs  
 Tel.: +36 23 500 275  
 Email: central\_europe@bradycorp.com

**Italy**

Gorgonzola  
 Tel.: +39 02 26 00 00 22  
 Email: italy@bradycorp.com

**Middle East FZE**

Dubai, UAE  
 Tel.: +971 4881 2524  
 Email: me@bradycorp.com

**Norway**

Kjeller  
 Tel.: +47 70 13 40 00  
 Email: norway@bradycorp.com

**Romania**

Bucharest  
 Tel.: +40 21 202 3032  
 Email: central\_europe@bradycorp.com

**Russia**

Moscow  
 Tel.: +7 495 269 47 87  
 Email: central\_europe@bradycorp.com

**Spain & Portugal**

Madrid, Spain  
 Tel.: +34 900 902 993  
 Email: spain@bradycorp.com,  
 portugal@bradycorp.com

**Sweden, Finland, Baltic states**

Kista, Sweden  
 Tel.: +46 (0) 8 590 057 30  
 Email: sweden@bradyeurope.com

**Turkey**

Istanbul  
 Tel.: +90 212 264 02 20 / 264 02 21  
 Email: turkey@bradycorp.com

**UK & Ireland**

Banbury, UK  
 Tel.: +44 (0) 1295 228 288  
 Email: uk@bradycorp.com

# Our mission is to identify and protect people, products and places



To help minimise our impact on the environment, Brady limits its number of reprints.

Updated versions are always available for download on [www.bradyeurope.com](http://www.bradyeurope.com).

 Search for: EUR-M-710-EN



Y1165537

Your distributor

27/11/2019